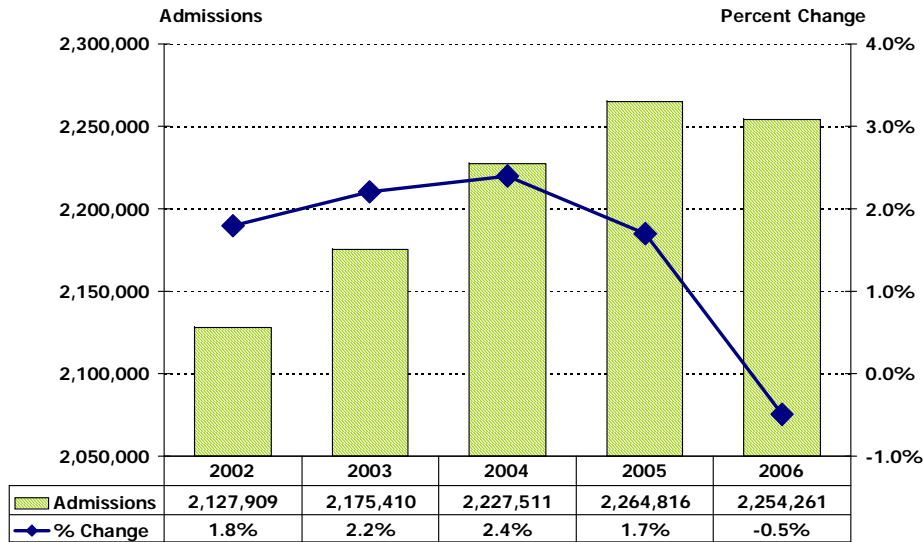


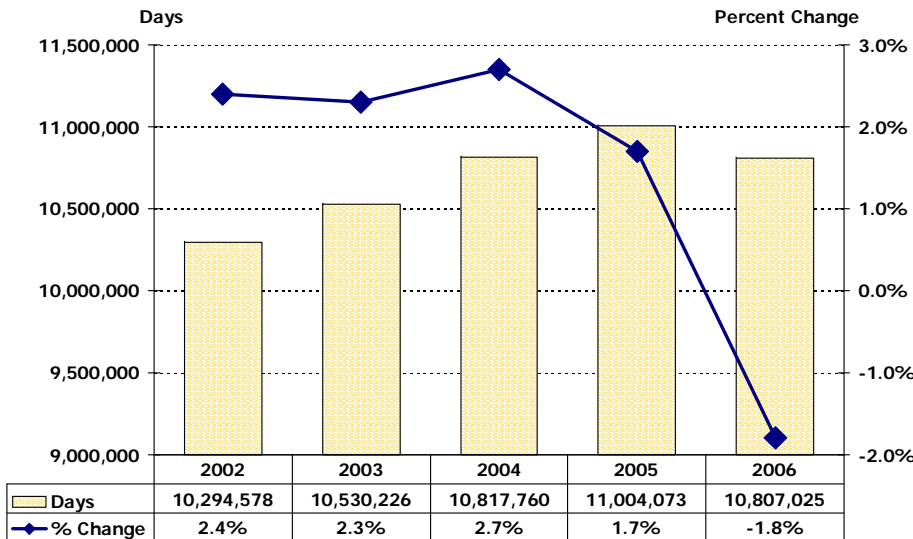


Admissions to Florida Hospitals**



Note: Excludes newborns and neonates.

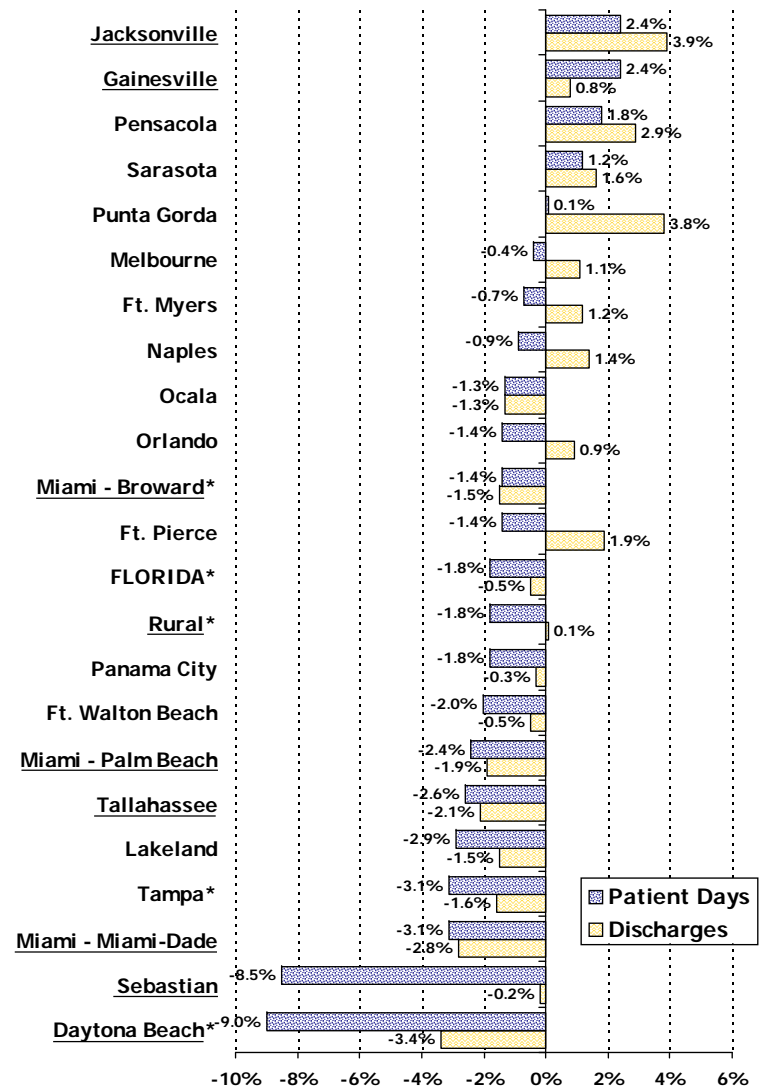
Inpatient Days in Florida Hospitals**



Note: Excludes newborns and neonates.

Sources: FHA Eye on the Market: Hospital Utilization Report, Third Quarter 2006, June 2007
FHA Analysis of AHCA Patient Discharge Data
AHCA Inpatient Discharge Data, 12 months ending 3Q02 - 3Q06

**Change in Discharges and Patient Days by MSA
Twelve Months Ending Third Quarter, 2005 vs. 2006**



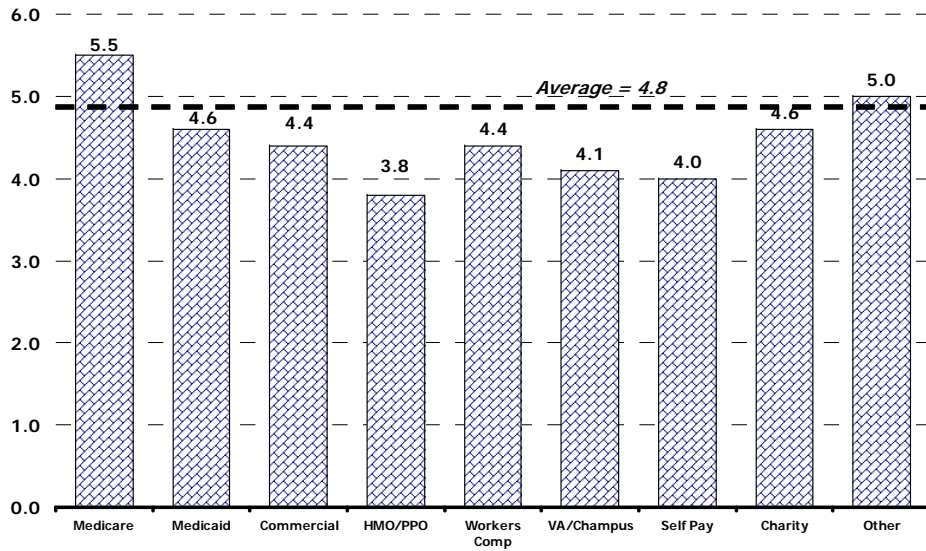
*Missing data

Note: MSA definitions changed as of 2006. Those MSAs affected are underlined. For a list of counties in each MSA, contact Debbie Hegarty, Surveys/Special Projects Manager at debbieh@fha.org.

Note: Databrief does not contain long-term acute care hospitals.

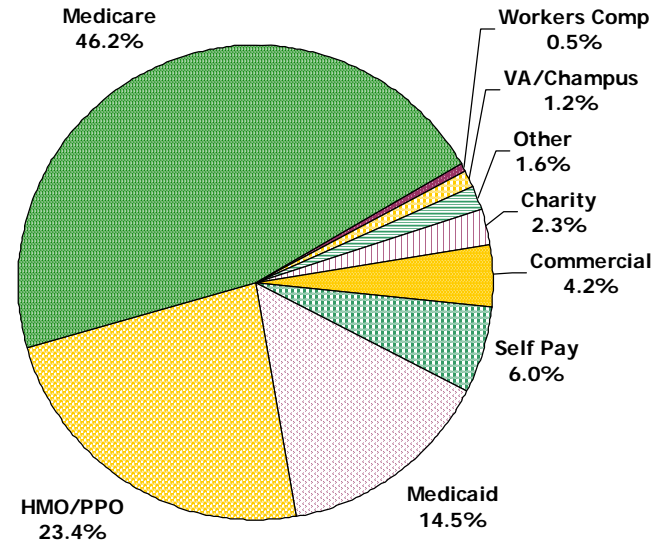
**All data based on 12 months ending June 2002 - 2006

Average Length of Stay by Payer



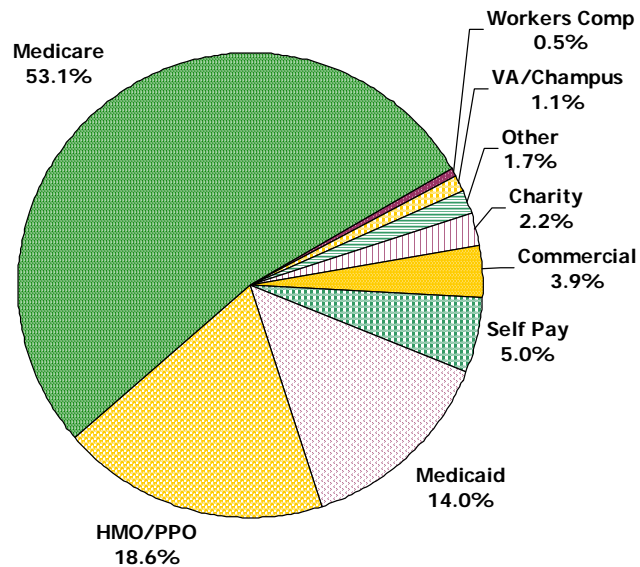
Admissions by Payer Category

Total Admissions: 2,254,261

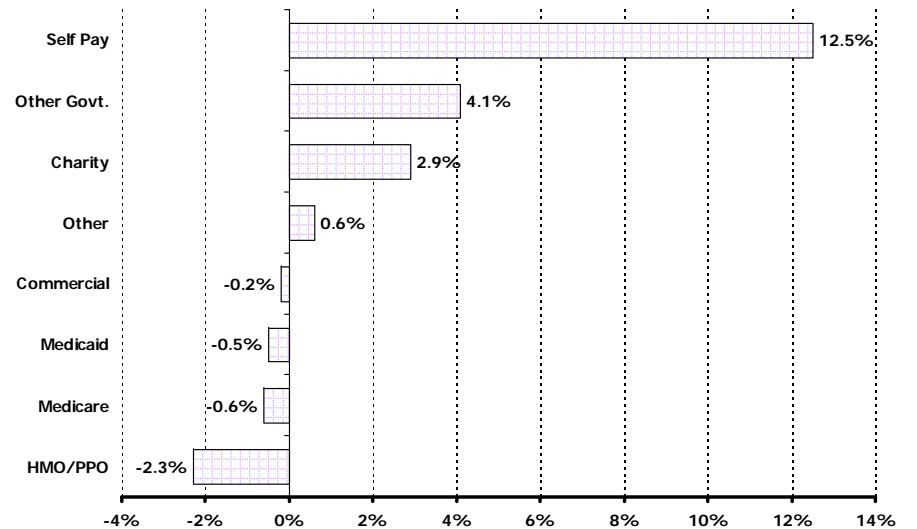


Patient Days by Payer Category

Total Patient Days: 10,807,025

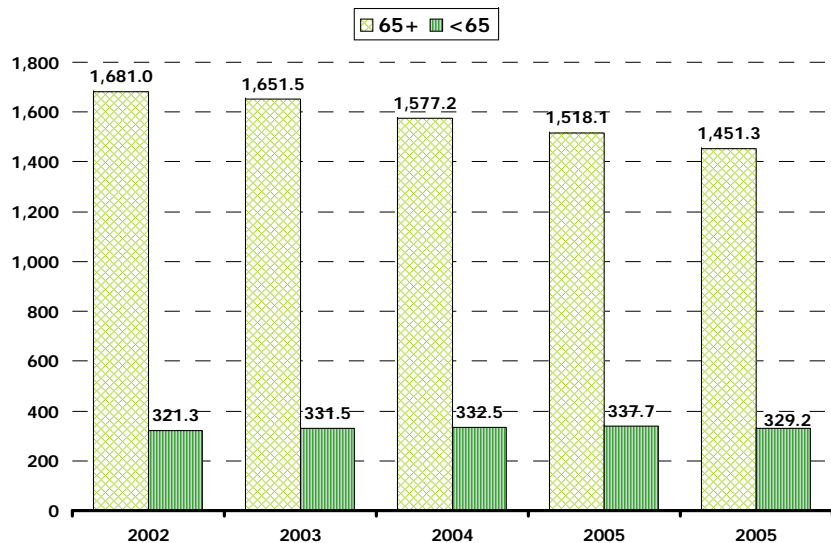


Changes in Admissions by Payer Category 2005 - 2006

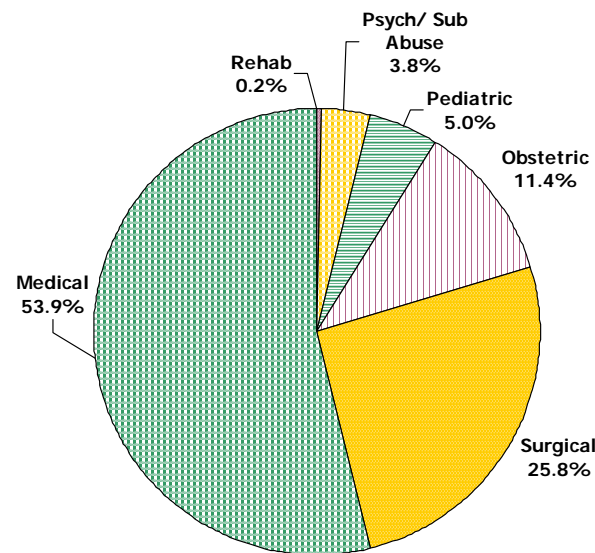


Note: Excludes newborns and neonates.

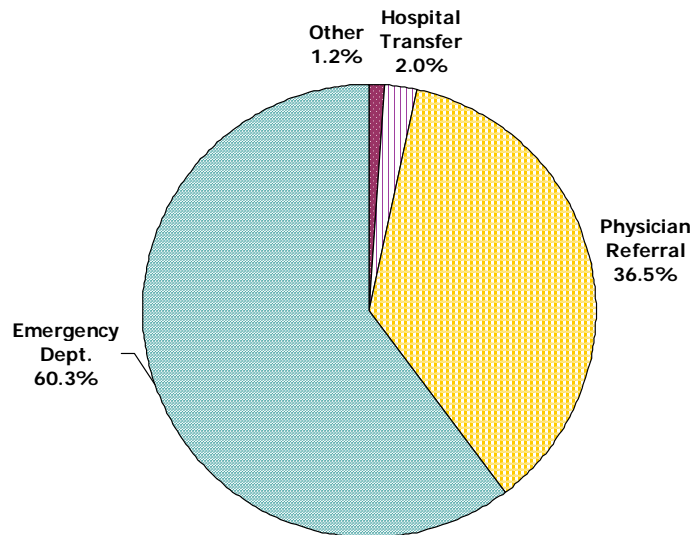
Patient Days per 1000**



Admissions by Type of Hospital Service



Source of Admission to Florida Hospitals



Top 15 DRGs

DRG Description	Discharges	ALOS	Average Charges
391 Normal Newborn	157,487	2.2	\$1,931
373 Vaginal Delivery w/o Complicating Diagnoses	120,859	2.3	\$8,070
430 Psychoses	89,660	8.3	\$13,359
127 Heart Failure & Shock	69,023	5.0	\$23,426
371 Cesarean Section w/o CC	63,549	3.2	\$14,613
143 Chest Pain	61,616	1.9	\$13,925
182 Esophagitis, Gastroent & Misc Digest Disorders Age >17 w/CC	50,608	4.3	\$21,337
88 Chronic Obstructive Pulmonary Disease	49,183	4.8	\$21,137
89 Simple Pneumonia & Pleurisy Age >17 w/CC	45,796	5.4	\$24,876
390 *Neonate W Other Significant Problems	43,028	2.7	\$3,974
416 Septecemia Age >17	33,362	7.6	\$43,881
14 Intracranial Hemorrhage & Stroke With Infarction	32,049	5.4	\$29,940
316 Renal Failure	28,843	6.0	\$29,083
174 G.I. Hemorrhage w/CC	28,774	4.5	\$24,105
138 Cardiac Arrhythmia & Conduction Disorders w CC	25,778	3.6	\$18,292
Total Top 15 DRGs	1,467,455	5.2	\$33,993
Total All DRGs	2,367,070	4.8	\$26,877

Source: AHCA Patient Discharge Data, 12 months ending September 30, 2006

For questions or comments, contact Debbie Hegarty, Surveys/Special Projects Manager at 407/841-6230 or debbieh@fha.org. FHA has a full line of market share reports available and can produce custom reports as well. Contact Debbie for details.

This information is from "FHA Eye on the Market: Hospital Inpatient Utilization Report, Third Quarter 2006, June 2007," which includes data on individual hospitals. To order a copy of the report, please contact FHA Data Services at 407/841-6230 or see attached order form.