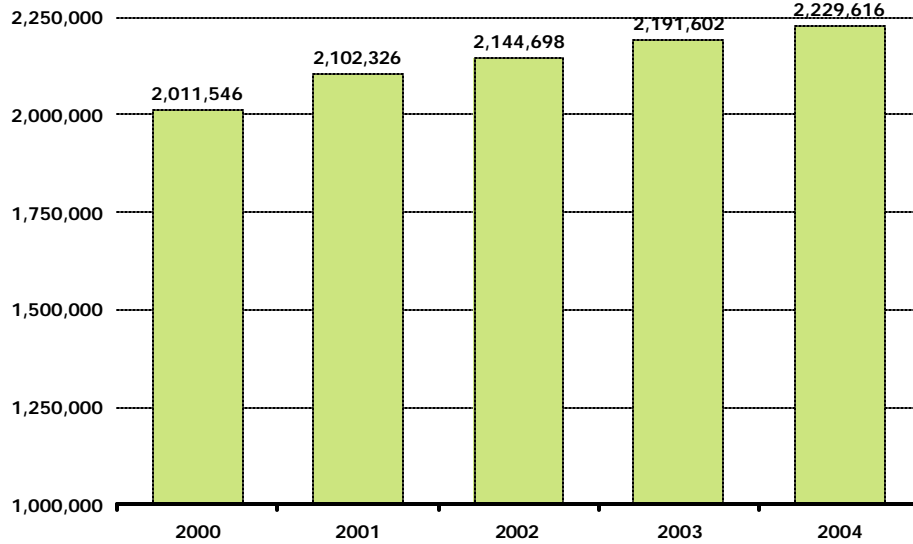


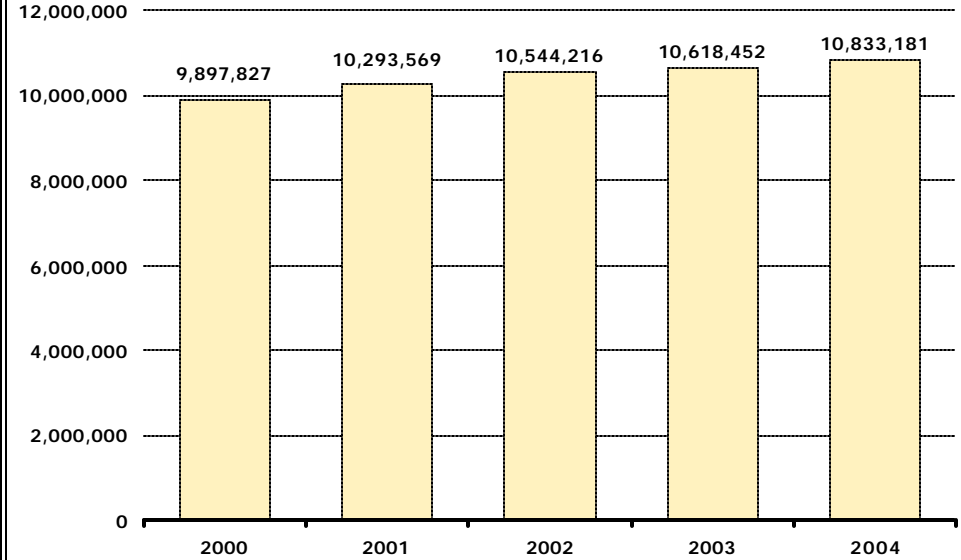


Admissions to Florida Hospitals**



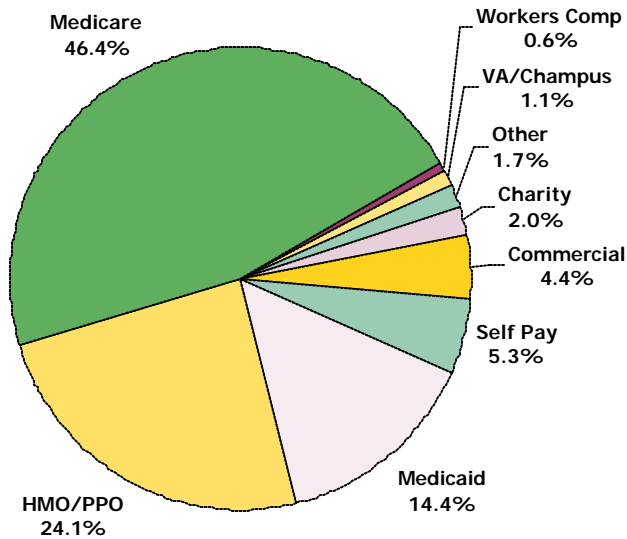
Note: Excludes newborns and neonates.

Inpatient Days in Florida Hospitals**

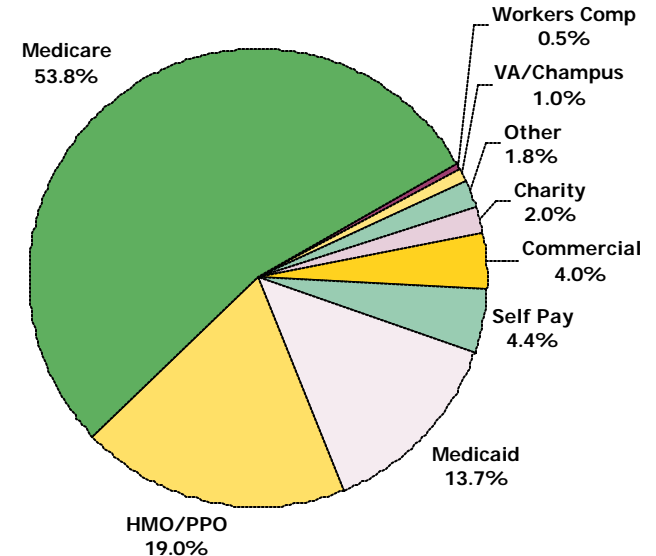


Note: Excludes newborns and neonates.

Admissions by Payer Category



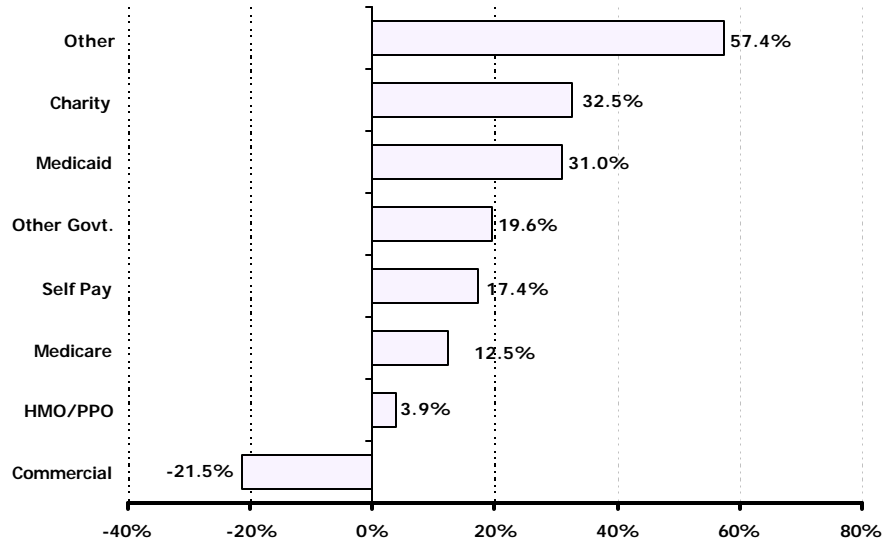
Patient Days by Payer Category



Sources: FHA Eye on the Market: Hospital Utilization Report, September 2005
 FHA Analysis of AHCA Patient Discharge Data
 AHCA Inpatient Discharge Data, 12 months ending 1Q00 - 4Q04

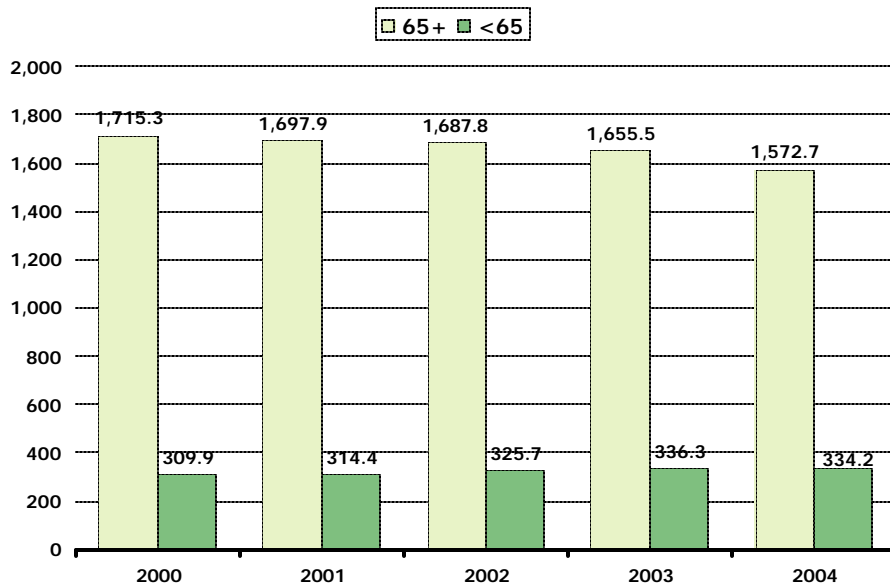
Note: Databrief does not contain long-term acute care hospitals.
 **All data based on 12 months ending December 2000 - 2004

Changes in Admissions by Payer Category 2000 - 2004**



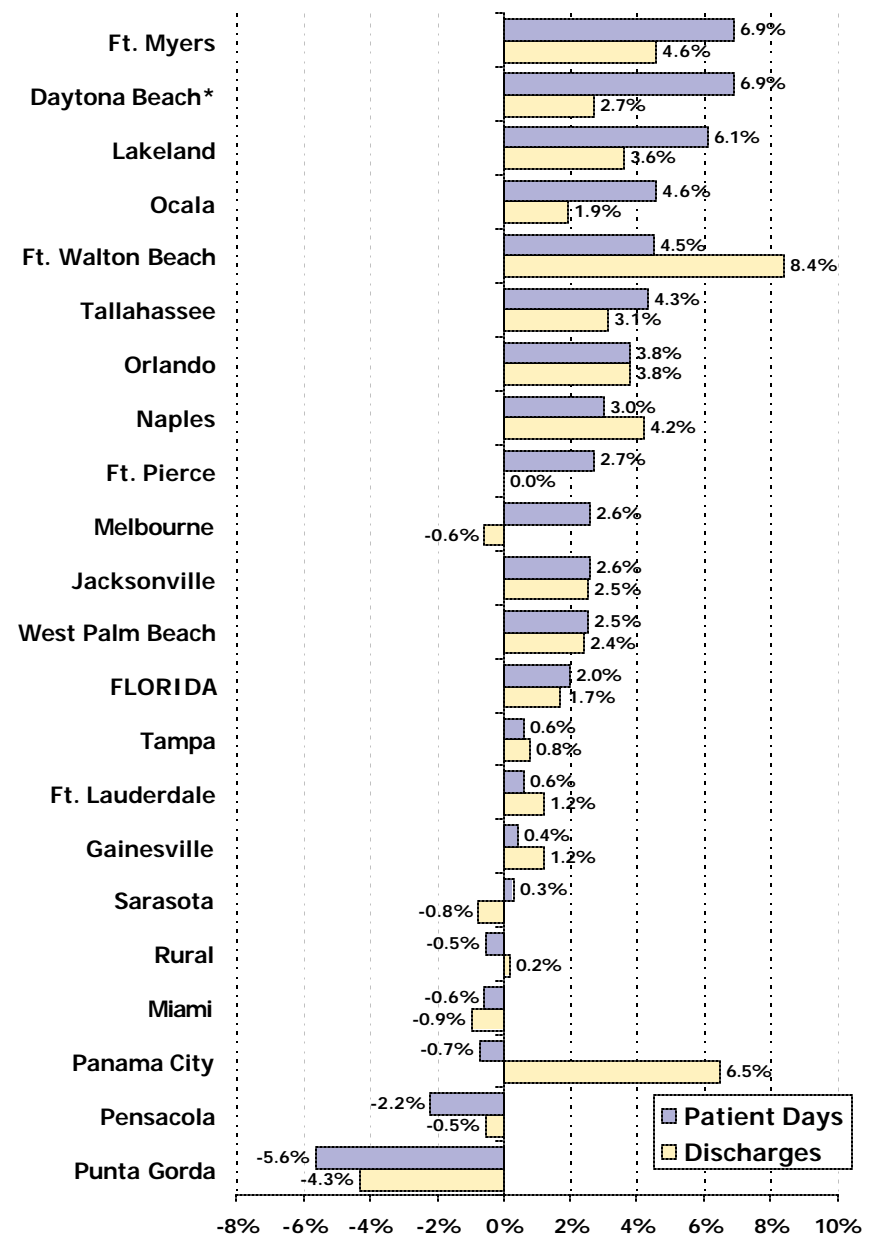
Note: Excludes newborns and neonates.

Patient Days per 1000**



Sources: FHA Eye on the Market: Hospital Utilization Report, September 2005
 FHA Analysis of AHCA Patient Discharge Data
 AHCA Inpatient Discharge Data, 12 months ending 1Q00 - 4Q04

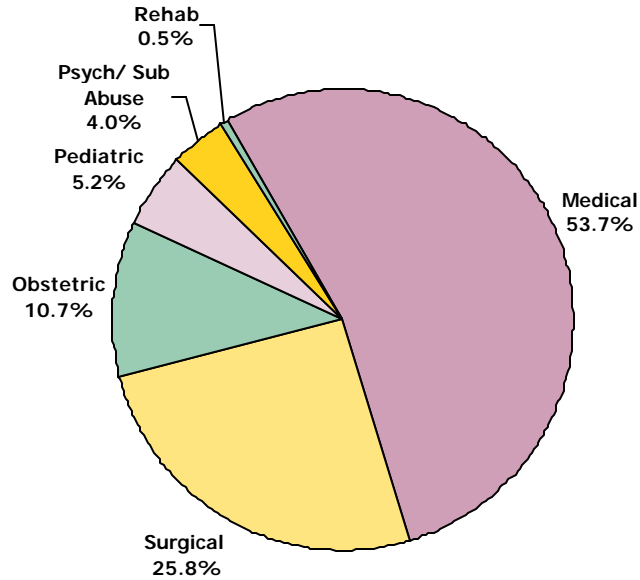
Change in Discharges and Patient Days by MSA Twelve Months Ending 4th Quarter, 2003 vs. 2004



*Missing data

Note: Databrief does not contain long-term acute care hospitals.
 **All data based on 12 months ending December 2000 - 2004

Admissions by Type of Hospital Service

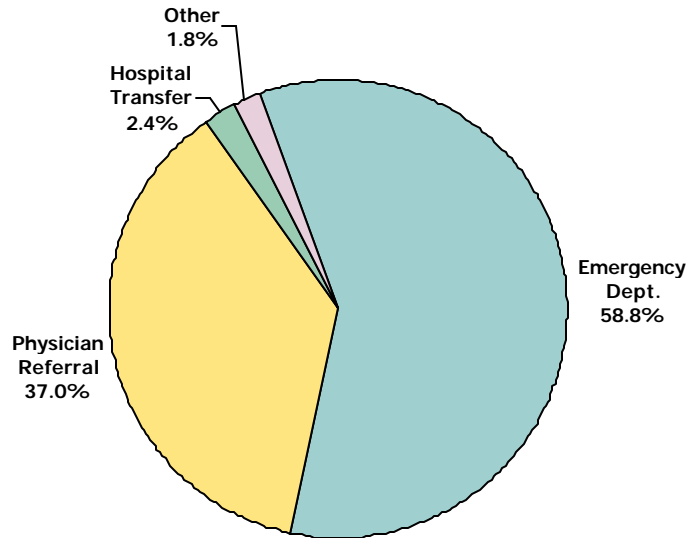


Top 15 DRGs

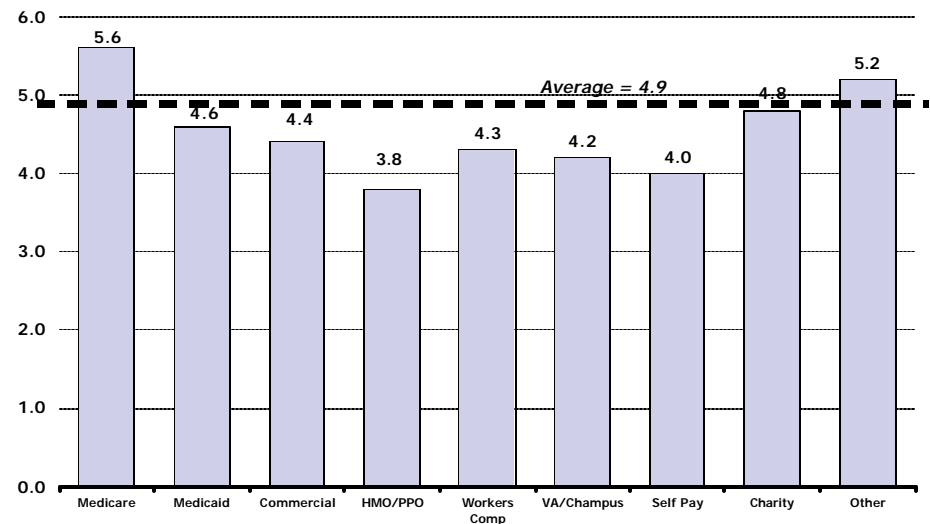
| DRG Description | Discharges | ALOS | Average Charges |
|---|------------------|------------|-----------------|
| 391 Normal Newborn | 147,905 | 2.2 | \$1,689 |
| 373 Vaginal Delivery w/o Complicating Diagnoses | 114,523 | 2.2 | \$7,261 |
| 430 Psychoses | 90,850 | 8.2 | \$12,551 |
| 127 Heart Failure & Shock | 73,614 | 5.0 | \$21,551 |
| 143 Chest Pain | 63,550 | 1.9 | \$12,192 |
| 371 Cesarean Section w/o CC | 55,450 | 3.2 | \$13,370 |
| 88 Chronic Obstructive Pulmonary Disease | 48,706 | 4.9 | \$18,762 |
| 209 Major Joint & Limb Reattachment Procedures - Lower Extremity | 51,167 | 4.5 | \$44,581 |
| 89 Simple Pneumonia & Pleurisy Age >17 w/CC | 46,446 | 5.6 | \$22,674 |
| 182 Esophagitis, Gastroent & Misc Digest Disorders Age >17 w/CC | 43,621 | 4.2 | \$18,731 |
| 390 *Neonate W Other Significant Problems | 38,039 | 2.8 | \$3,615 |
| 527 Percutaneous Cardiovascular Proc w/Drug Eluting Stent w/o AMI | 35,761 | 2.1 | \$49,177 |
| 174 G.I. Hemorrhage w/CC | 30,347 | 4.6 | \$21,605 |
| 14 Intracranial Hemorrhage & Stroke With Infarction | 29,709 | 5.6 | \$26,848 |
| 416 Septecemia Age >17 | 27,580 | 7.6 | \$36,737 |
| Total Top 15 DRGs | 897,268 | 4.0 | \$16,441 |
| Total All DRGs | 2,483,338 | 4.8 | \$25,393 |

Source: AHCA Patient Discharge Data, 12 months ending December 31, 2004

Source of Admission to Florida Hospitals



Average Length of Stay by Payer



For questions or comments, contact Debbie Hegarty, Surveys/Special Projects Manager at 407/841-6230 or debbieh@fha.org. FHA has a full line of market share reports available and can produce custom reports as well. Contact Debbie for details.

This information is from "FHA Eye on the Market: Hospital Inpatient Utilization Report, September 2005," which includes data on individual hospitals. To order a copy of the report, please contact Jennifer Lightner at 407/841-6230 or see attached order form.