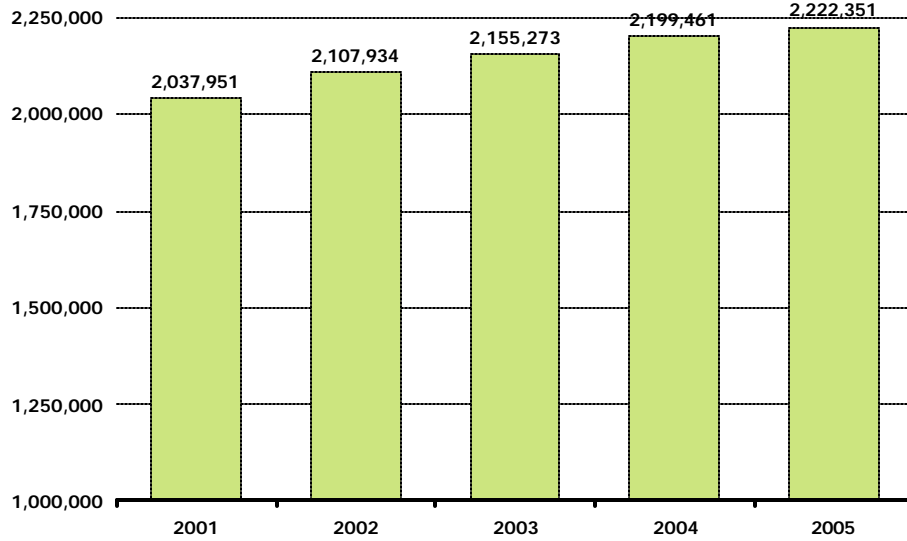


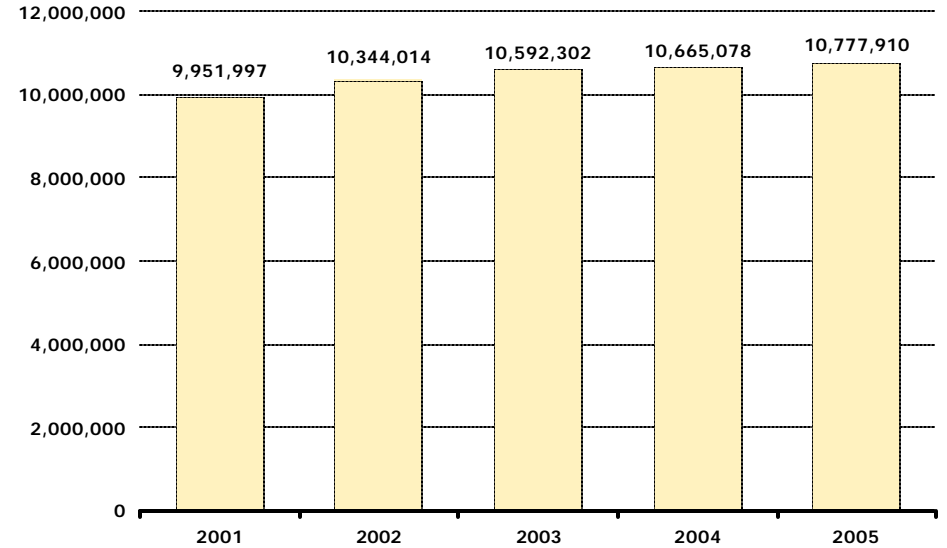


Admissions to Florida Hospitals**



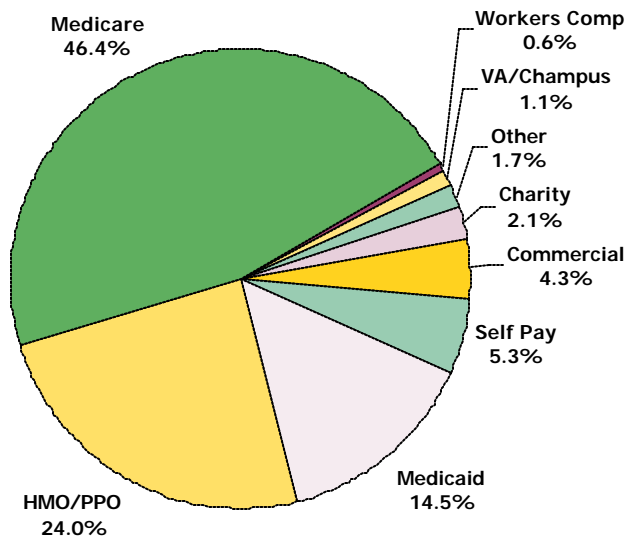
Note: Excludes newborns and neonates.

Inpatient Days in Florida Hospitals**

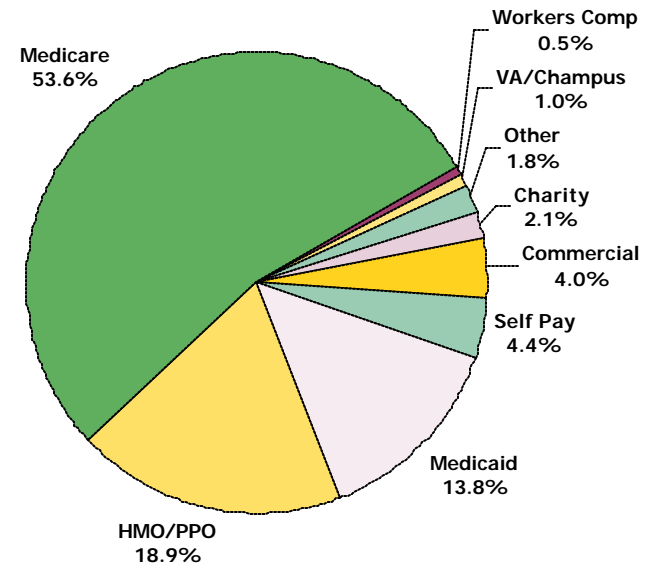


Note: Excludes newborns and neonates.

Admissions by Payer Category



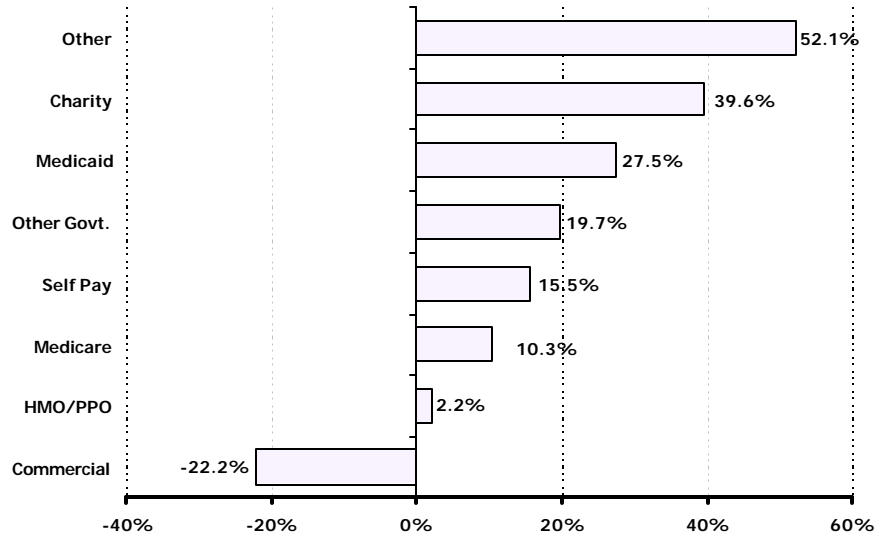
Patient Days by Payer Category



Sources: FHA Eye on the Market: Hospital Utilization Report, December 2005
 FHA Analysis of AHCA Patient Discharge Data
 AHCA Inpatient Discharge Data, 12 months ending 2Q00 - 1Q05

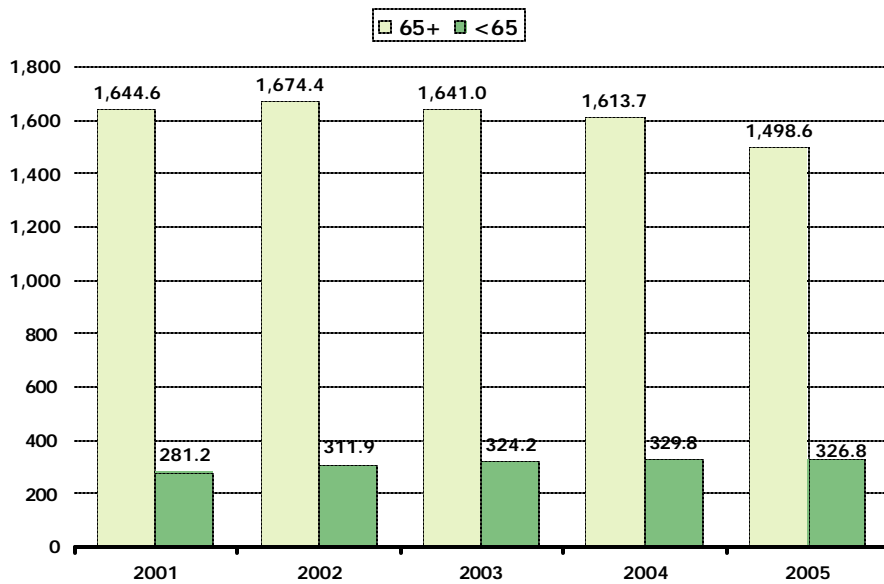
Note: Databrief does not contain long-term acute care hospitals.
 **All data based on 12 months ending March 2001 - 2005

Changes in Admissions by Payer Category 2001 - 2005 **

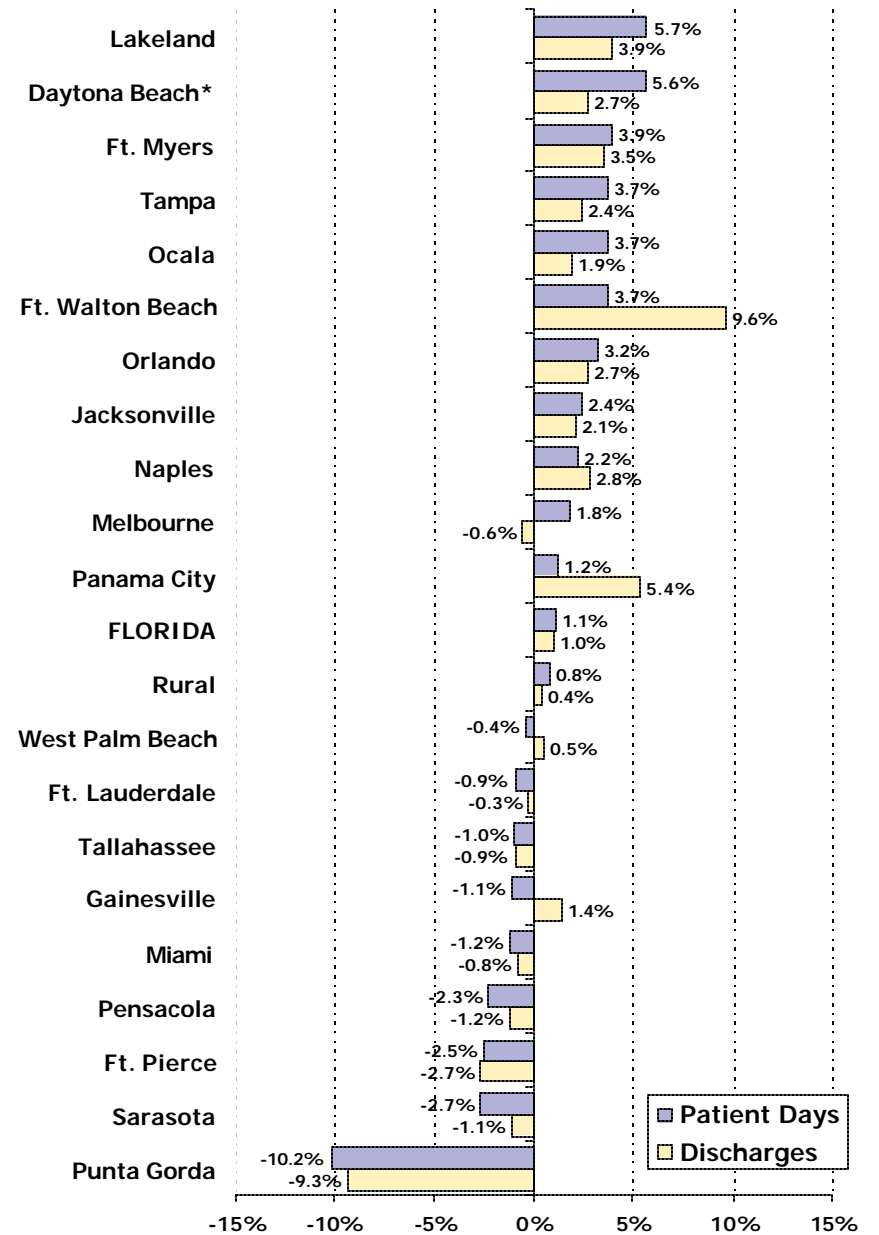


Note: Excludes newborns and neonates.

Patient Days per 1000**



Change in Discharges and Patient Days by MSA Twelve Months Ending 1st Quarter, 2004 vs. 2005

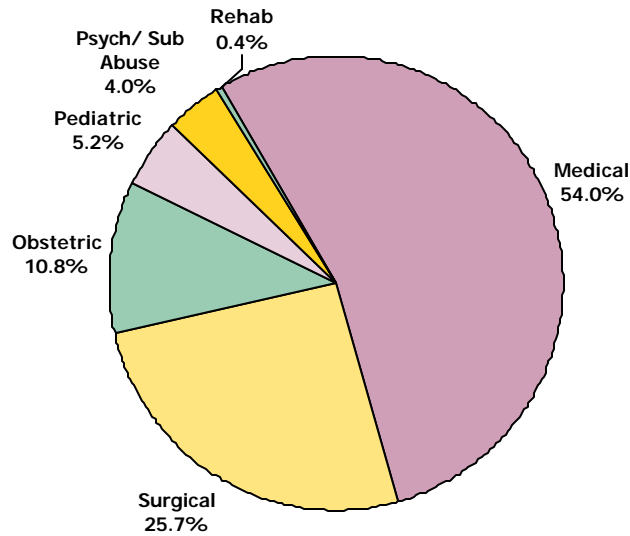


*Missing data

Sources: FHA Eye on the Market: Hospital Utilization Report, December 2005
 FHA Analysis of AHCA Patient Discharge Data
 AHCA Inpatient Discharge Data, 12 months ending 2Q01 - 1Q05

Note: Databrief does not contain long-term acute care hospitals.
 **All data based on 12 months ending March 2001 - 2005

Admissions by Type of Hospital Service

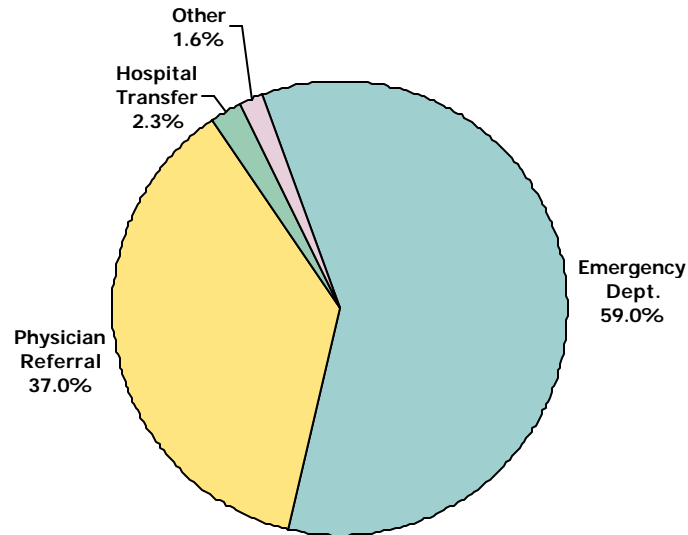


Top 15 DRGs

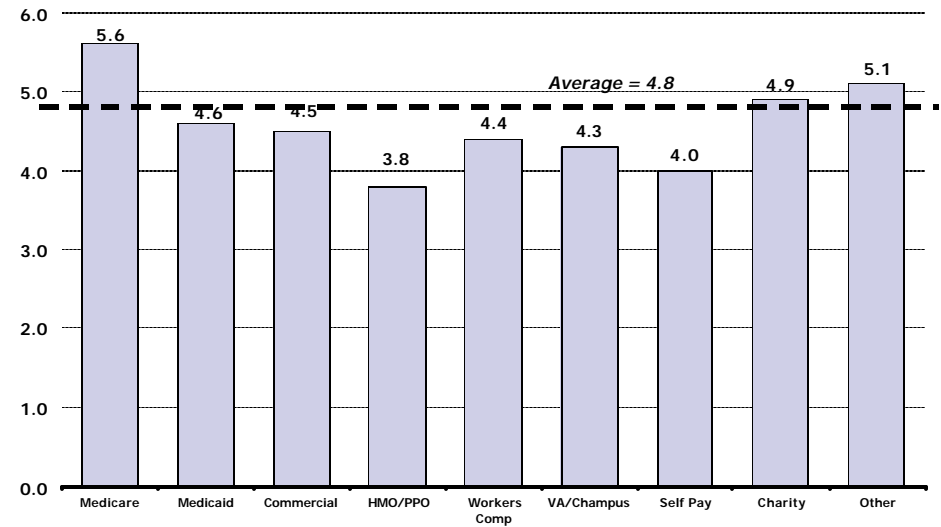
DRG Description	Discharges	ALOS	Average Charges
391 Normal Newborn	149,072	2.2	\$1,725
373 Vaginal Delivery w/o Complicating Diagnoses	115,273	2.3	\$7,399
430 Psychoses	90,297	8.0	\$12,586
127 Heart Failure & Shock	74,277	5.0	\$22,056
143 Chest Pain	63,026	1.9	\$12,459
371 Cesarean Section w/o CC	56,429	3.2	\$13,548
209 Major Joint & Limb Reattachment Procedures - Lower Extremity	52,116	4.4	\$45,430
88 Chronic Obstructive Pulmonary Disease	51,379	4.9	\$19,081
89 Simple Pneumonia & Pleurisy Age >17 w/CC	48,051	5.5	\$22,949
182 Esophagitis, Gastroent & Misc Digest Disorders Age >17 w/CC	43,380	4.3	\$19,120
390 *Neonate W Other Significant Problems	38,387	2.8	\$3,640
527 Percutaneous Cardiovascular Proc w/Drug Eluting Stent w/o AMI	37,670	2.1	\$49,521
14 Intracranial Hemorrhage & Stroke With Infarction	31,009	5.6	\$27,350
174 G.I. Hemorrhage w/CC	29,945	4.6	\$22,099
416 Septecemia Age >17	28,975	7.6	\$38,139
Total Top 15 DRGs	909,286	4.0	\$16,865
Total All DRGs	2,487,927	4.7	\$25,598

Source: AHCA Patient Discharge Data, 12 months ending March 31, 2005

Source of Admission to Florida Hospitals



Average Length of Stay by Payer



For questions or comments, contact Debbie Hegarty, Surveys/Special Projects Manager at 407/841-6230 or debbieh@fha.org. FHA has a full line of market share reports available and can produce custom reports as well. Contact Debbie for details.

This information is from "FHA Eye on the Market: Hospital Inpatient Utilization Report, December 2005," which includes data on individual hospitals. To order a copy of the report, please contact Jennifer Lightner at 407/841-6230 or see attached order form.