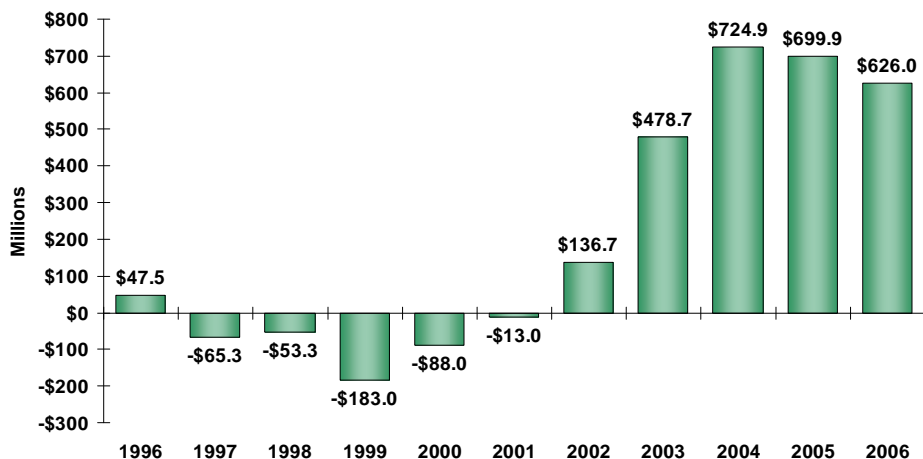
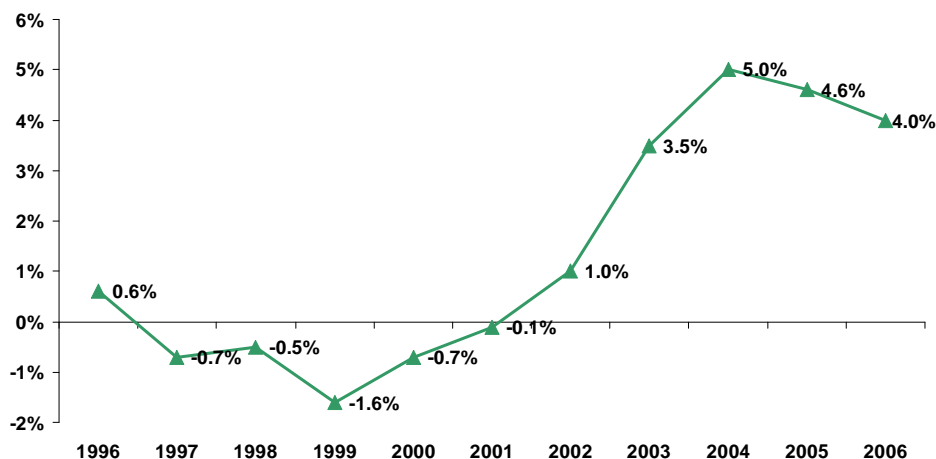




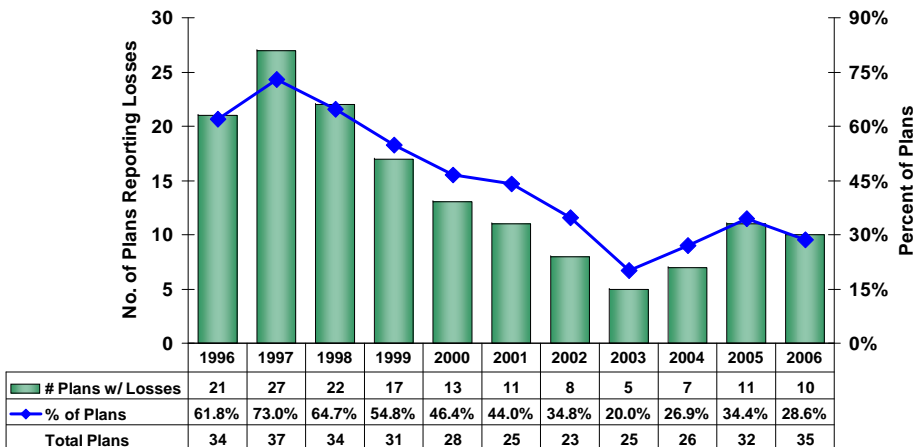
Net Income in Florida's HMOs
1996 - 2006



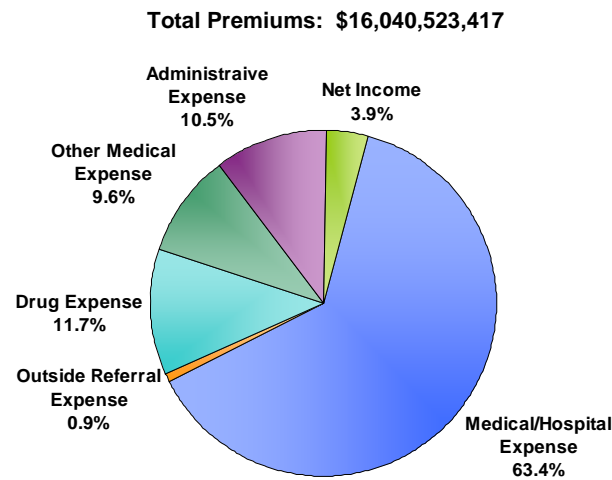
Profit Margin in Florida's HMOs
1996 - 2006



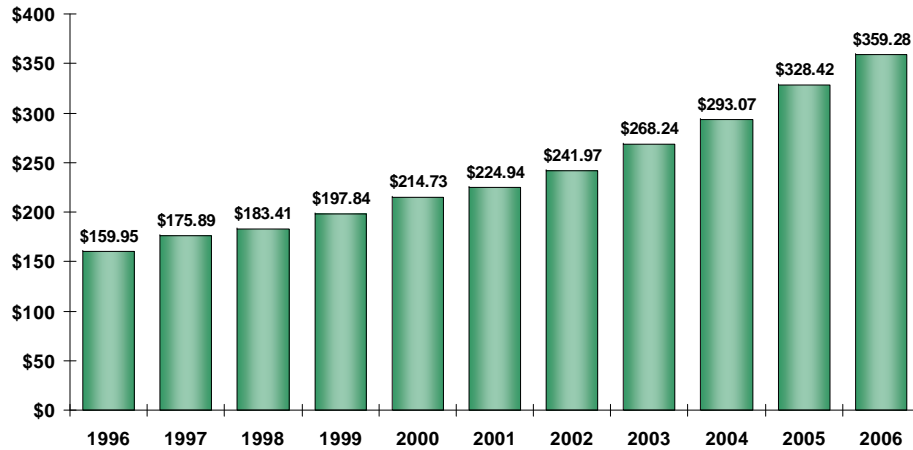
Number of HMOs Reporting Losses
1996 - 2006



How the HMO Premium is Allocated
2006



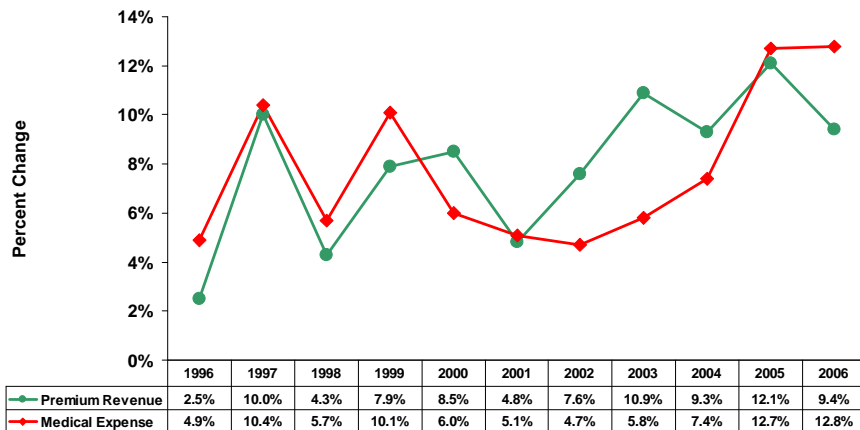
Premium Revenue per Member per Month
1996 - 2006



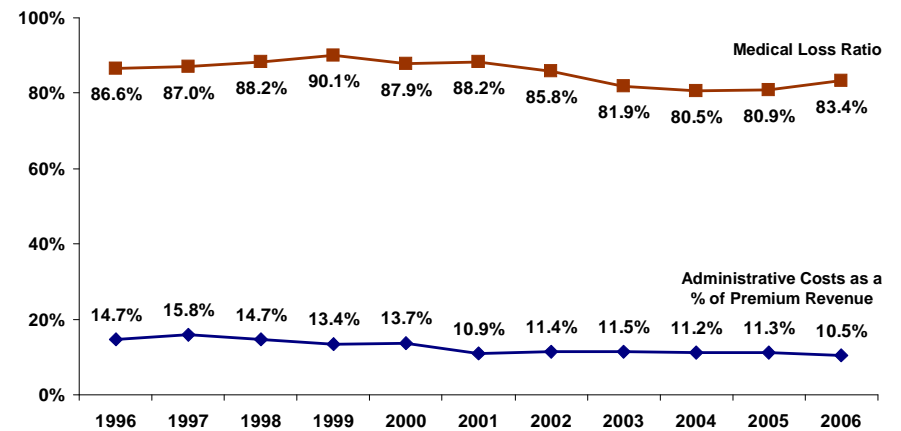
Medical Expenses per Member per Month
1996 - 2006



Premium Revenue and Medical Expense
per Member per Month
Percent Change
1996 - 2006



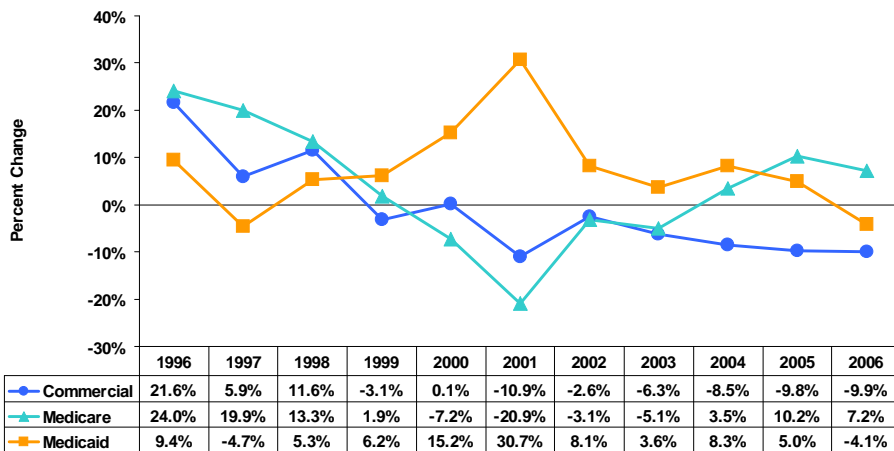
Medical Loss Ratio & Administrative Costs
as a Percent of Premium Revenue
1996 - 2006



Administrative Expenses per Member per Month 1996 - 2006

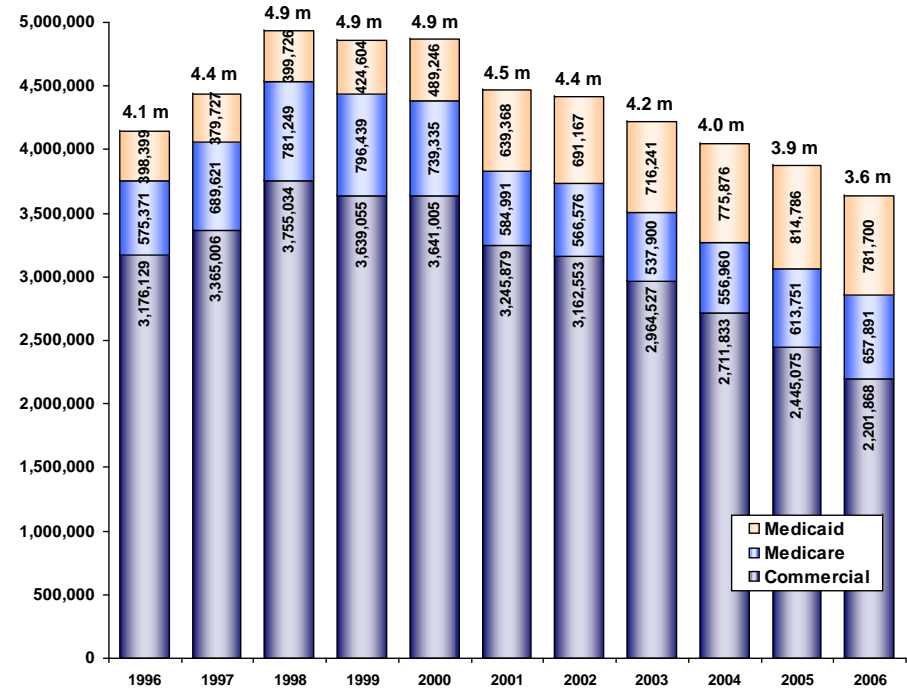


Percent Change in HMO Enrollment 1996 - 2006



Floridians in HMOs 1996 - 2006

Total Enrollment: 3,641,459



For questions or comments, contact Debbie Hegarty at 407/841-6230 or debbieh@fha.org.

HMO Reports Available from FHA

To **ORDER** these reports, go to the appropriate link to download the order form or e-mail Dena Miller-Jones at denam@fha.org

HMO Indicators Report: [YTD financial & utilization data
www.fha.org/acrobat/indicatorsorder.pdf](http://www.fha.org/acrobat/indicatorsorder.pdf)

HMO Market Share Report: [Quarterly enrollment & market penetration
www.fha.org/acrobat/hmomarketshare.pdf](http://www.fha.org/acrobat/hmomarketshare.pdf)