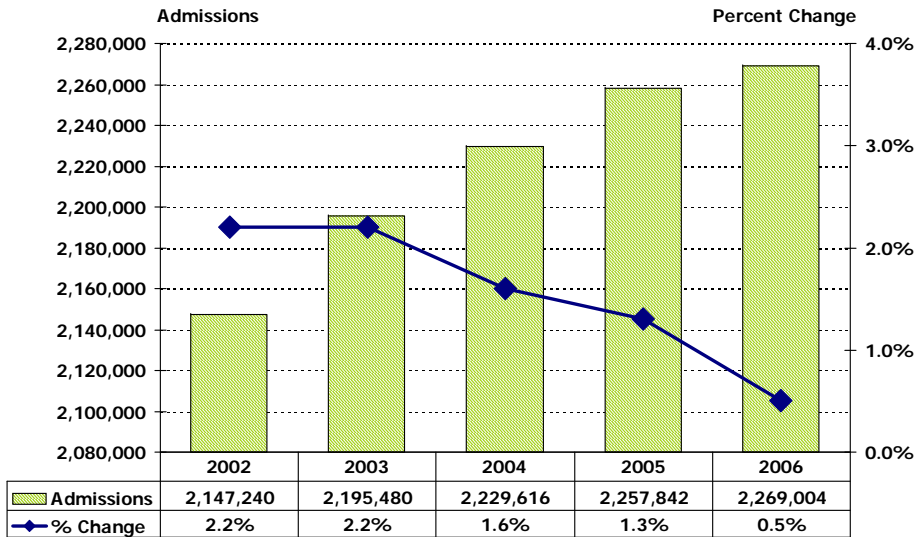


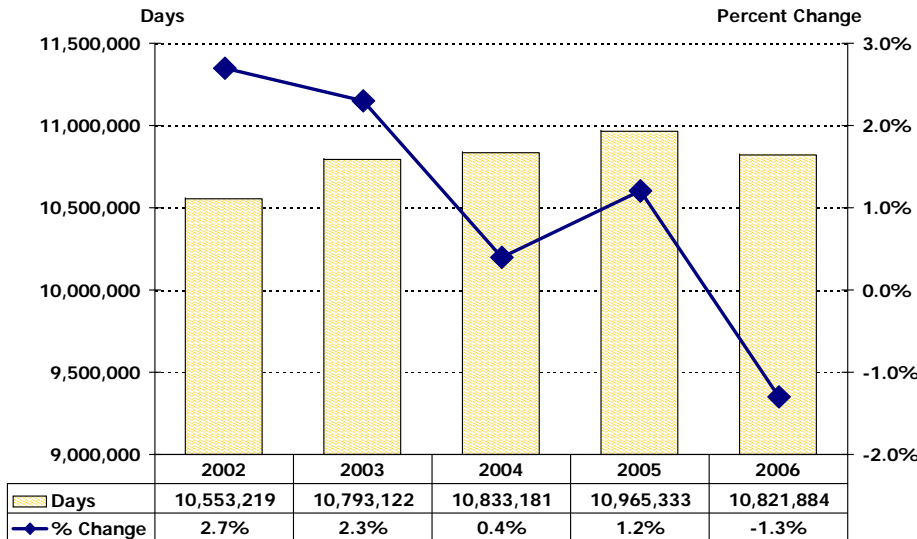


Admissions to Florida Hospitals**



Note: Excludes newborns and neonates.

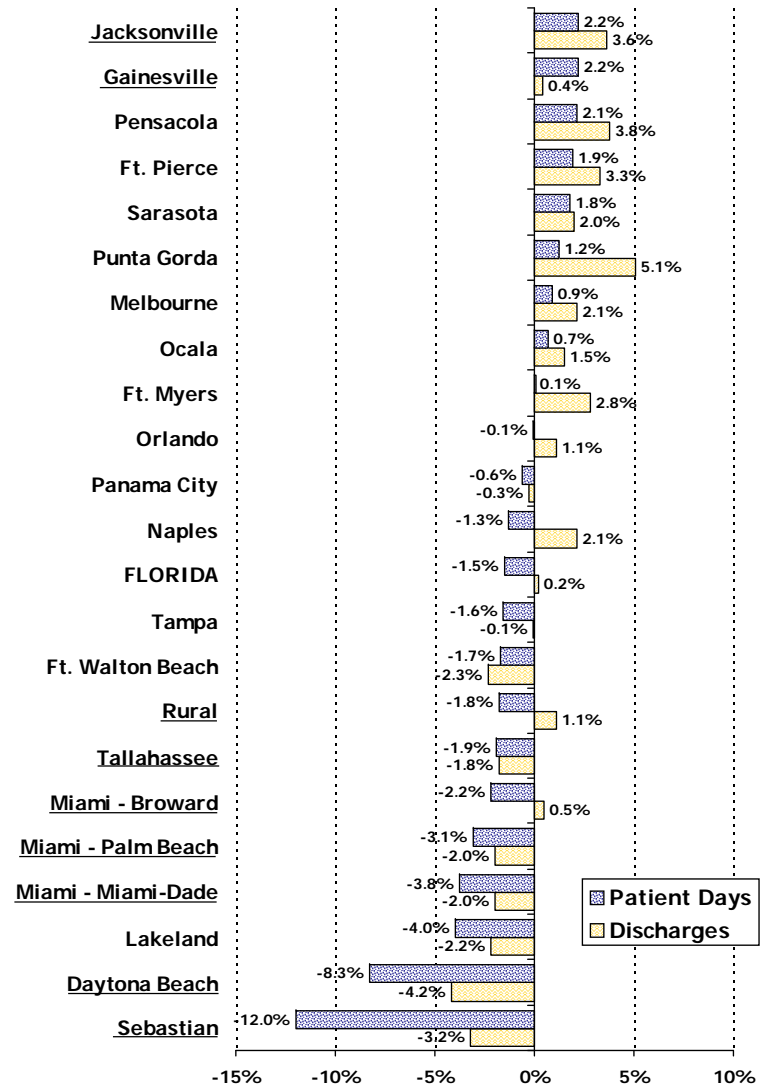
Inpatient Days in Florida Hospitals**



Note: Excludes newborns and neonates.

Sources: FHA Eye on the Market: Hospital Utilization Report, Fourth Quarter 2006, November 2007
FHA Analysis of AHCA Patient Discharge Data
AHCA Inpatient Discharge Data, 12 months ending 4Q02 - 4Q06

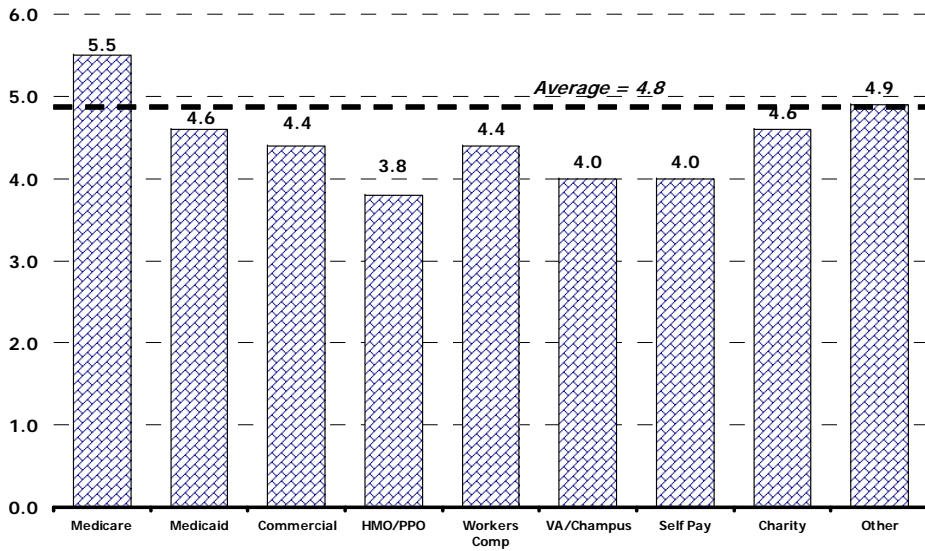
**Change in Discharges and Patient Days by MSA
Twelve Months Ending Fourth Quarter, 2005 vs. 2006**



Note: MSA definitions changed as of 2006. Those MSAs affected are underlined. For a list of counties in each MSA, contact Debbie Hegarty, Surveys/Special Projects Manager at debbieh@fha.org.

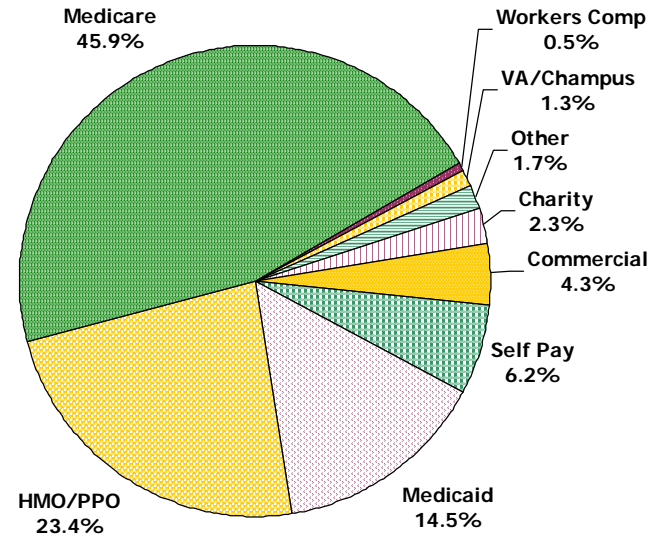
Note: Databrief does not contain long-term acute care hospitals.
**All data based on 12 months ending December 2002 - 2006

Average Length of Stay by Payer



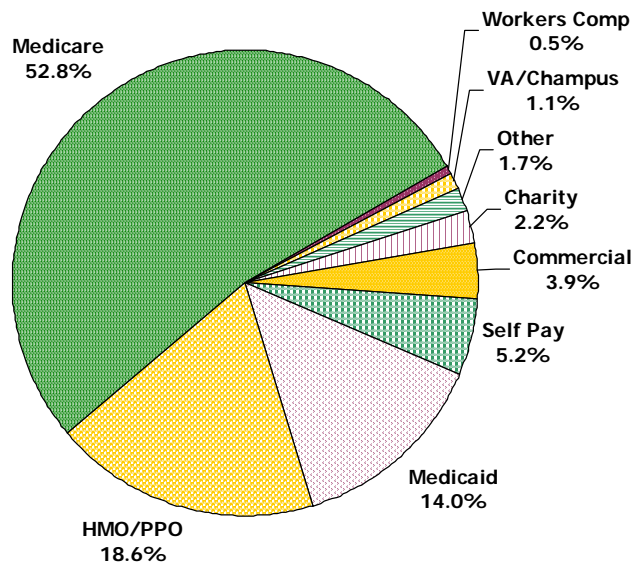
Admissions by Payer Category

Total Admissions: 2,269,004

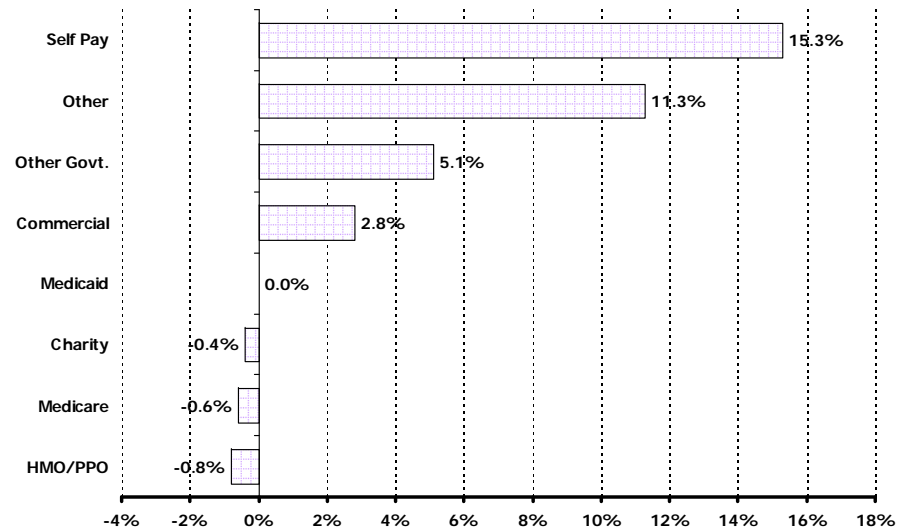


Patient Days by Payer Category

Total Patient Days: 10,821,884



Changes in Admissions by Payer Category 2005 - 2006

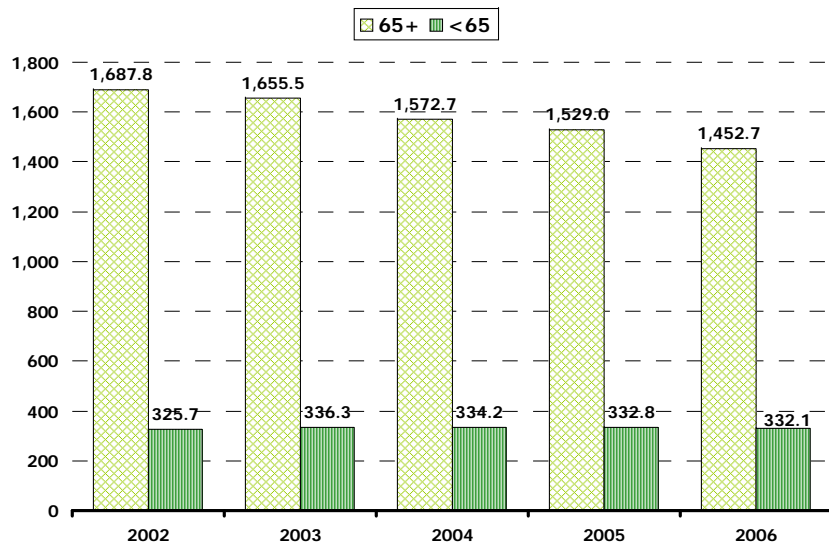


Note: Excludes newborns and neonates.

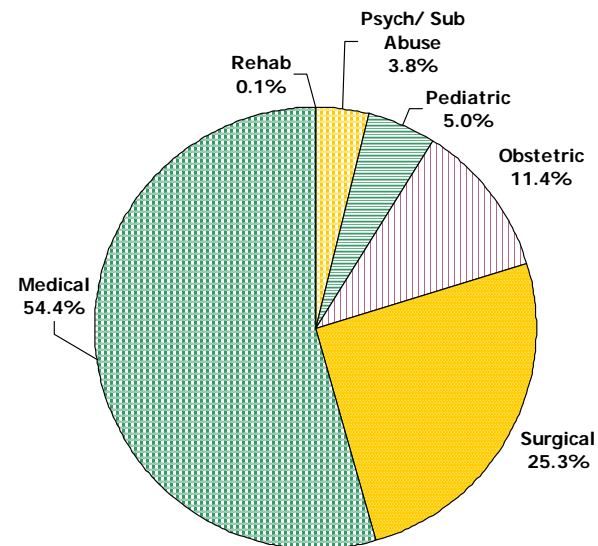
Sources: FHA Eye on the Market: Hospital Utilization Report, Fourth Quarter 2006, November 2007
 FHA Analysis of AHCA Patient Discharge Data
 AHCA Inpatient Discharge Data, 12 months ending 4Q02 - 4Q06

Note: Databrief does not contain long-term acute care hospitals.
 **All data based on 12 months ending December 2002 - 2006

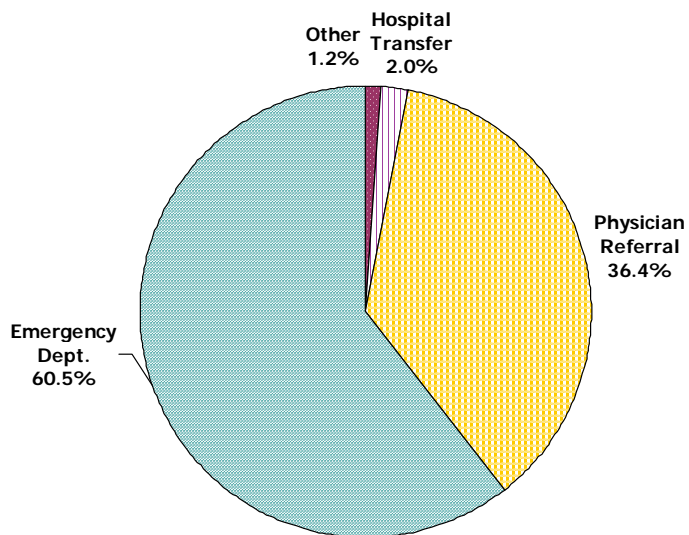
Patient Days per 1000**



Admissions by Type of Hospital Service



Source of Admission to Florida Hospitals



Top 15 DRGs

DRG Description	Discharges	ALOS	Average Charges
391 Normal Newborn	159,812	2.2	\$1,961
373 Vaginal Delivery w/o Complicating Diagnoses	122,140	2.3	\$8,241
430 Psychoses	89,541	8.3	\$13,538
127 Heart Failure & Shock	68,510	4.9	\$23,739
371 Cesarean Section w/o CC	64,283	3.1	\$14,866
143 Chest Pain	61,731	1.8	\$14,213
544 Major Joint Replacement or Reattachment of Lower Exremity	49,811	4.2	\$49,726
182 Esophagitis, Gastroent & Misc Digest Disorders Age >17 w CC	49,617	4.1	\$21,358
88 Chronic Obstructive Pulmonary Disease	49,242	4.7	\$21,445
89 Simple Pneumonia & Pleurisy Age >17 w CC	45,849	5.3	\$25,279
390 Neonate w Other Significant Problems	43,291	2.7	\$4,036
14 Intracranial Hemorrhage or Cerebral Infarction	31,924	5.4	\$30,411
316 Renal Failure	29,911	6.0	\$29,529
558 Percutaneous Cardiovascular Proc w Drug Eluting Stent w/o MA	28,895	1.8	\$53,660
174 G.I. Hemorrhage w CC	28,621	4.5	\$24,481
Total Top 15 DRGs	923,178	3.9	\$17,356
Total All DRGs	2,543,428	4.8	\$29,495

Source: AHCA Patient Discharge Data, 12 months ending December 31, 2006

For questions or comments, contact Debbie Hegarty, Surveys/Special Projects Manager at 407/841-6230 or debbieh@fha.org. FHA has a full line of market share reports available and can produce custom reports as well. Contact Debbie for details.

This information is from "FHA Eye on the Market: Hospital Inpatient Utilization Report, Fourth Quarter 2006, November 2007," which includes data on individual hospitals. To order a copy of the report, please contact FHA Data Services at 407/841-6230 or see attached order form.