

Inpatient Use in Florida Hospitals

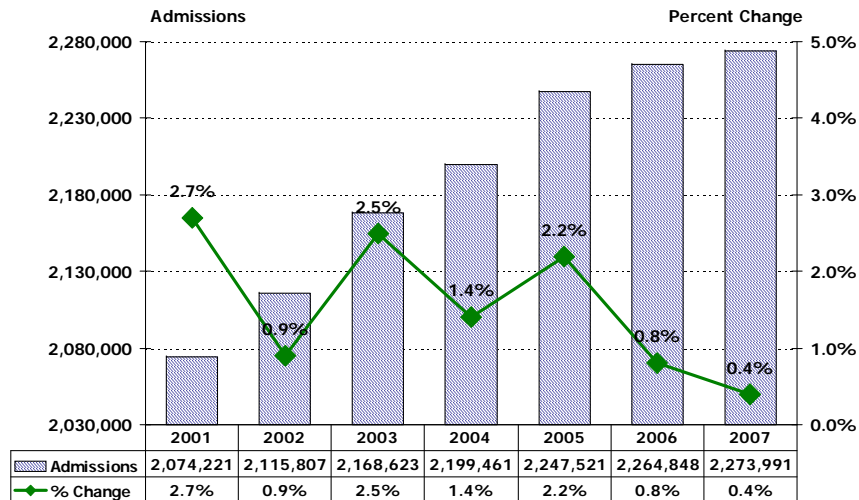
(based on data through June 30, 2007)



Data Brief

Admissions to Florida Hospitals

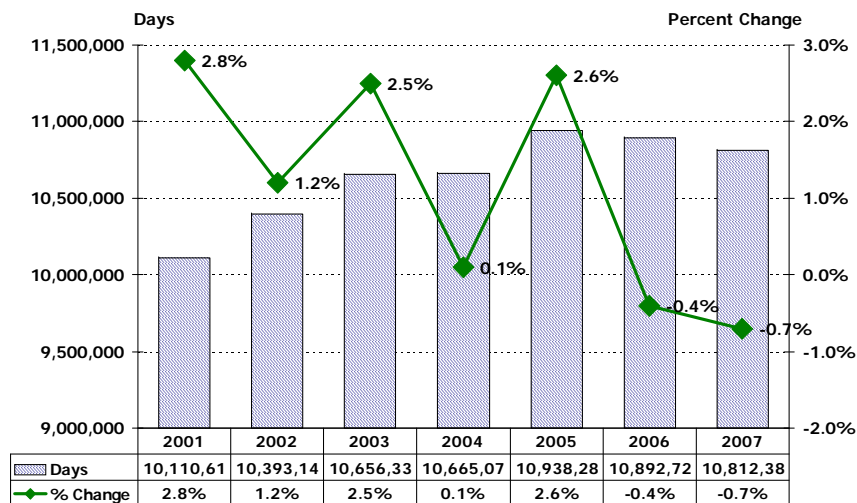
Twelve Months Ending Second Quarter 2003 - Second Quarter 2007



Note: Excludes newborns and neonates.

Inpatient Days in Florida Hospitals

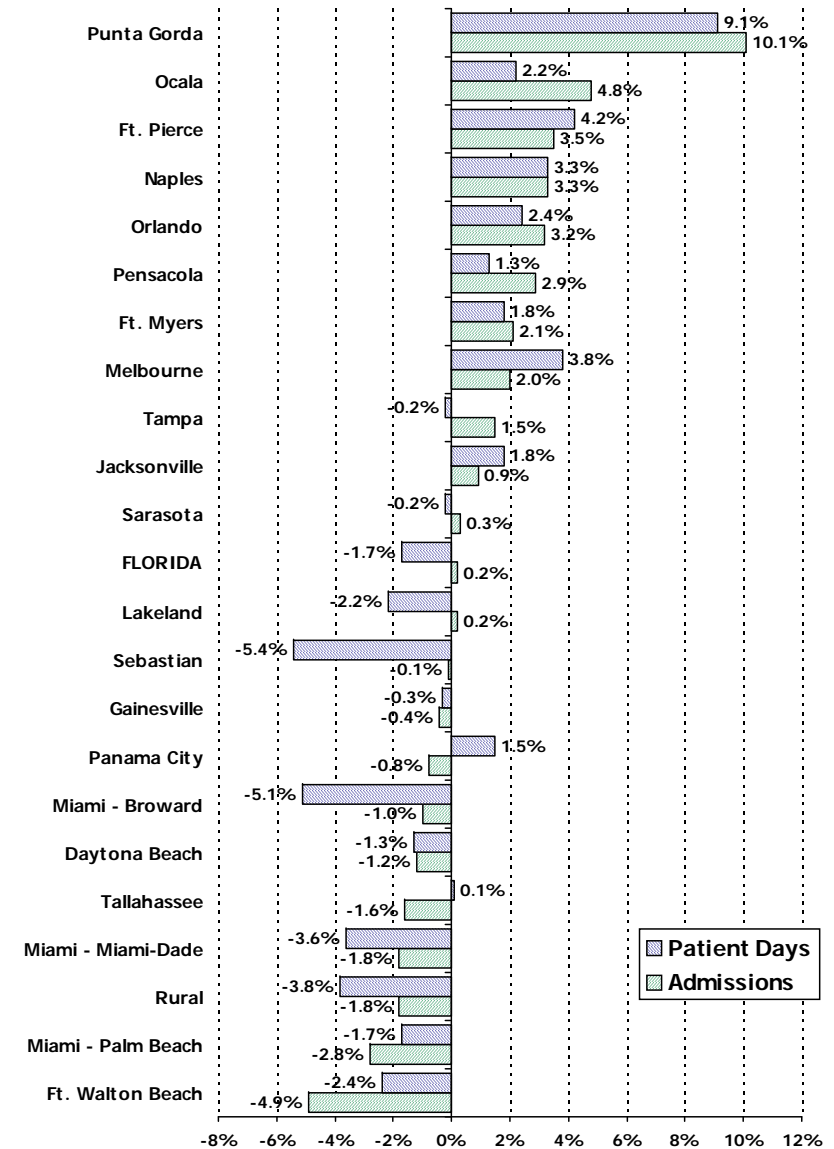
Twelve Months Ending Second Quarter 2003 - Second Quarter 2007



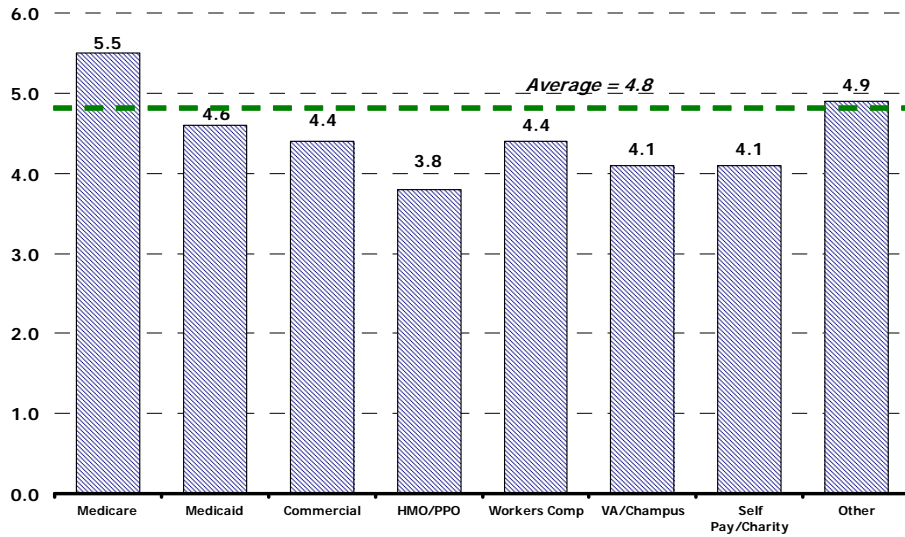
Note: Excludes newborns and neonates.

Change in Admissions and Patient Days by MSA

Twelve Months Ending Second Quarter, 2006 vs. Second Quarter 2007

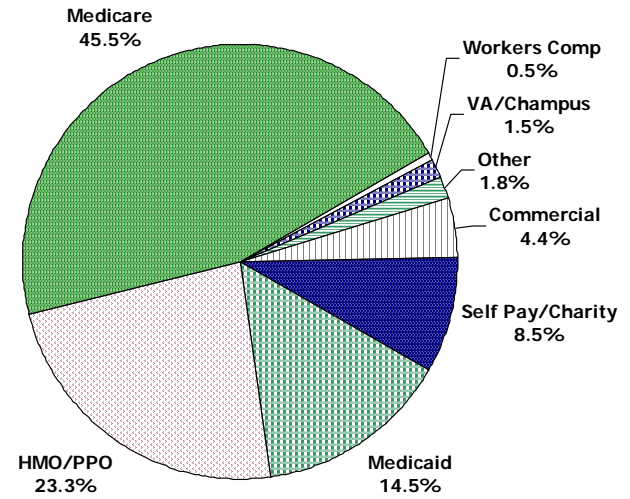


Average Length of Stay by Payer Twelve Months Ending Second Quarter 2007



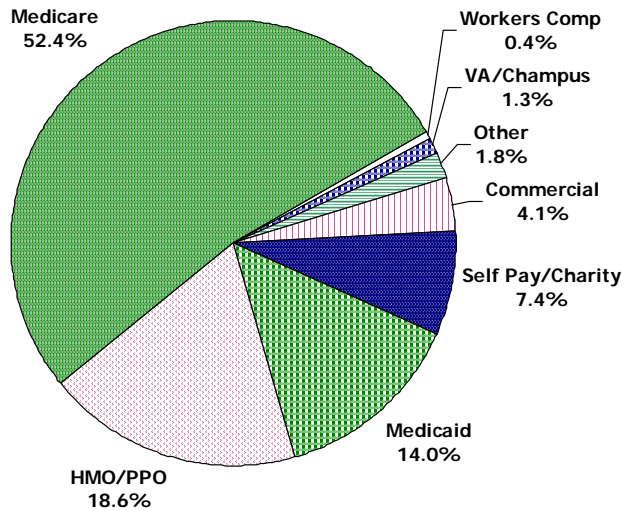
Admissions by Payer Category Twelve Months Ending Second Quarter 2007

Total Admissions: 2,273,991

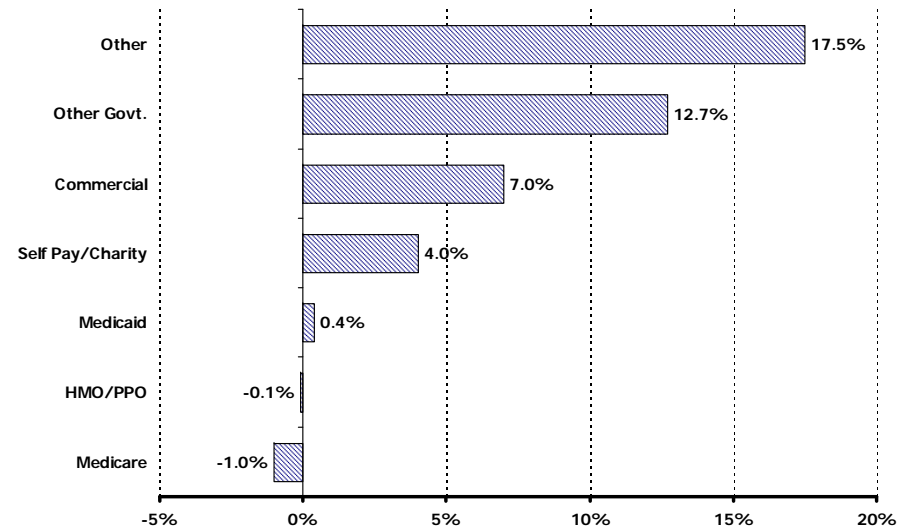


Patient Days by Payer Category Twelve Months Ending Second Quarter 2007

Total Patient Days: 10,812,389



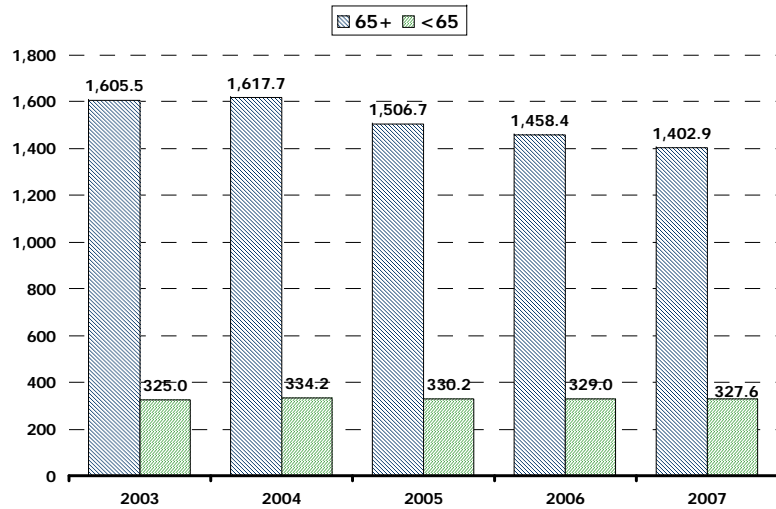
Changes in Admissions by Payer Category Twelve Months Ending Second Quarter 2006 vs. Second Quarter 2007



Note: Excludes newborns and neonates.

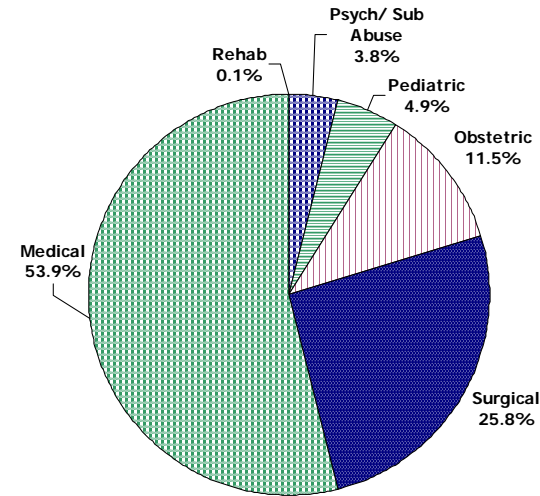
Patient Days per 1000

Twelve Months Ending Second Quarter 2003 - Second Quarter 2007



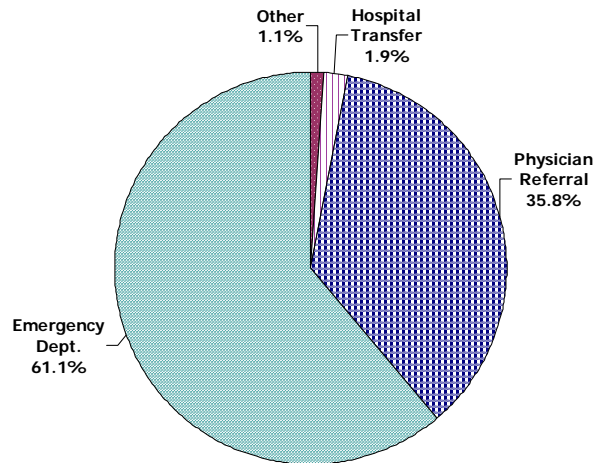
Admissions by Type of Hospital Service

Twelve Months Ending Second Quarter 2007



Source of Admission to Florida Hospitals

Twelve Months Ending Second Quarter 2007



Top 15 DRGs

Twelve Months Ending Second Quarter 2007

DRG Description	Discharges	ALOS	Average Charges
391 Normal Newborn	161,682	2.2	\$2,056
373 Vaginal Delivery w/o Complicating Diagnoses	122,944	2.3	\$8,568
430 Psychoses	91,055	8.2	\$13,588
127 Heart Failure & Shock	66,510	4.9	\$24,842
371 Cesarean Section w/o CC	65,753	3.1	\$15,386
143 Chest Pain	60,500	1.9	\$15,094
544 Major Joint Replacement or Reattachment of Lower Extremity	51,402	4.2	\$51,266
88 Chronic Obstructive Pulmonary Disease	48,036	4.6	\$22,054
182 Esophagitis, Gastroent & Misc Digest Disorders Age >17 w CC	44,746	3.9	\$21,679
390 Neonate w Other Significant Problems	43,903	2.7	\$4,252
89 Simple Pneumonia & Pleurisy Age >17 w CC	43,540	5.3	\$26,457
316 Renal Failure	32,403	5.9	\$30,446
14 Intracranial Hemorrhage or Cerebral Infarction	31,751	5.3	\$31,738
174 G.I. Hemorrhage w CC	27,916	4.5	\$25,904
138 Cardiac Arrhythmia & Conduction Disorders w CC	26,883	3.6	\$19,305
Total Top 15 DRGs	919,024	3.9	\$16,800
Total All DRGs	2,551,945	4.8	\$30,682

Sources: FHA Eye on the Market: Hospital Utilization Report, Second Quarter 2007, June 2008
 AHCA Inpatient Discharge Data, short-term acute care hospitals, 12 months ending June 2003 - June 2007

For questions or comments, contact Debbie Hegarty, Surveys/Special Projects Manager at 407/841-6230 or debbieh@fha.org. FHA has a full line of market share reports available and can produce custom reports as well. Contact Debbie for details.

This information is from "FHA Eye on the Market: Hospital Inpatient Utilization Report, Second Quarter 2007, June 2008," which includes data on individual hospitals. To order a copy of the report, please contact FHA Data Services at 407/841-6230 or see attached order form.