

Inpatient Use in Florida Hospitals

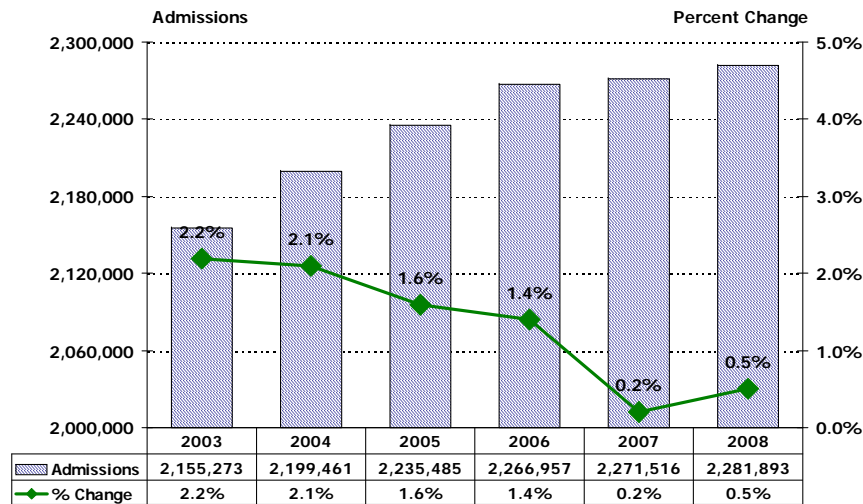
(based on data through March 31, 2007)



Data Brief

Admissions to Florida Hospitals

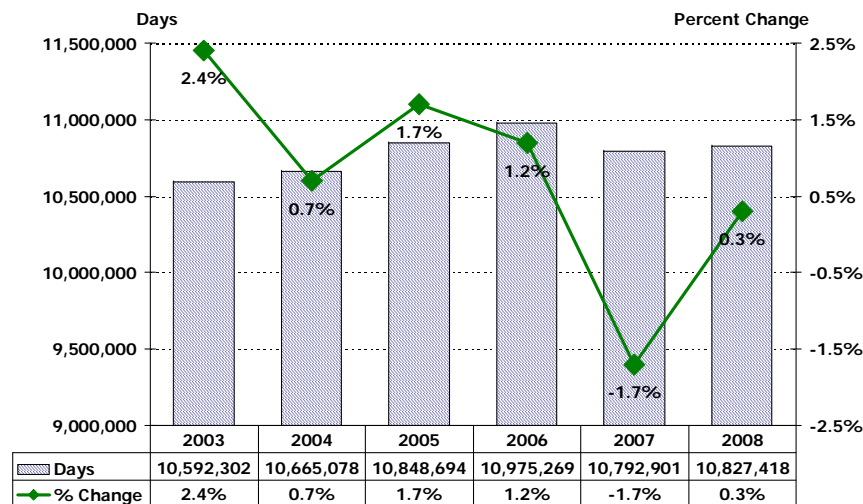
Twelve Months Ending First Quarter 2003 - First Quarter 2008



Note: Excludes newborns and neonates.

Inpatient Days in Florida Hospitals

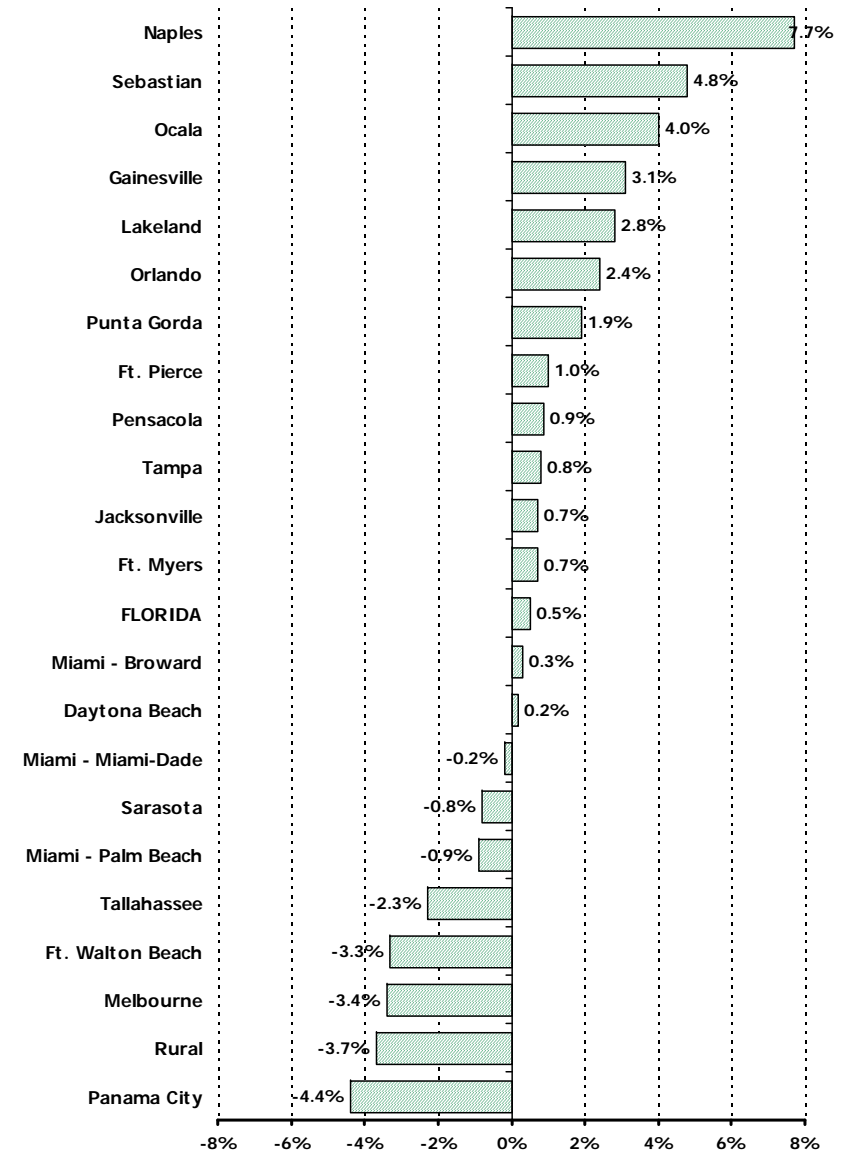
Twelve Months Ending First Quarter 2003 - First Quarter 2008



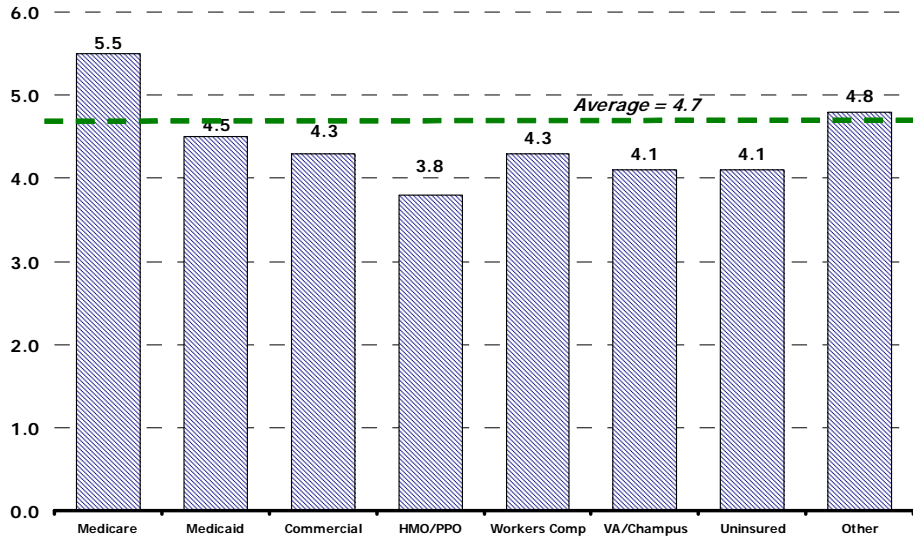
Note: Excludes newborns and neonates.

Change in Admissions by MSA

Twelve Months Ending First Quarter, 2007 vs. First Quarter 2008

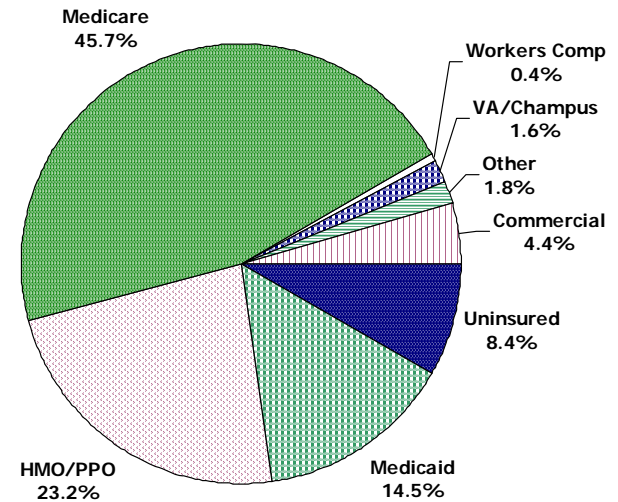


Average Length of Stay by Payer Twelve Months Ending First Quarter 2008



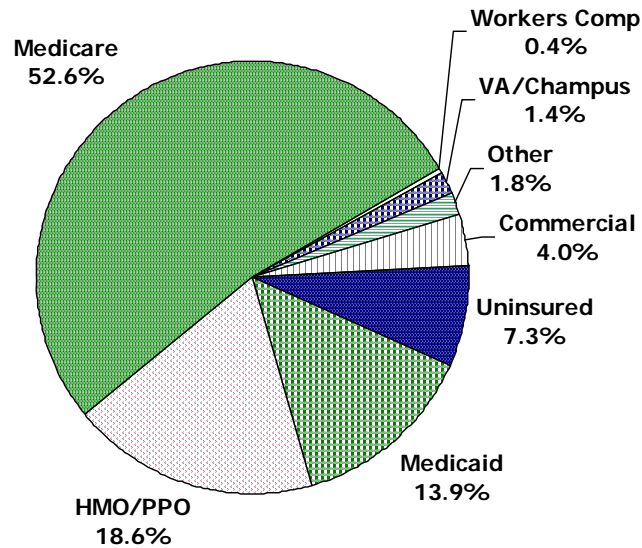
Admissions by Payer Category Twelve Months Ending First Quarter 2008

Total Admissions: 2,281,893

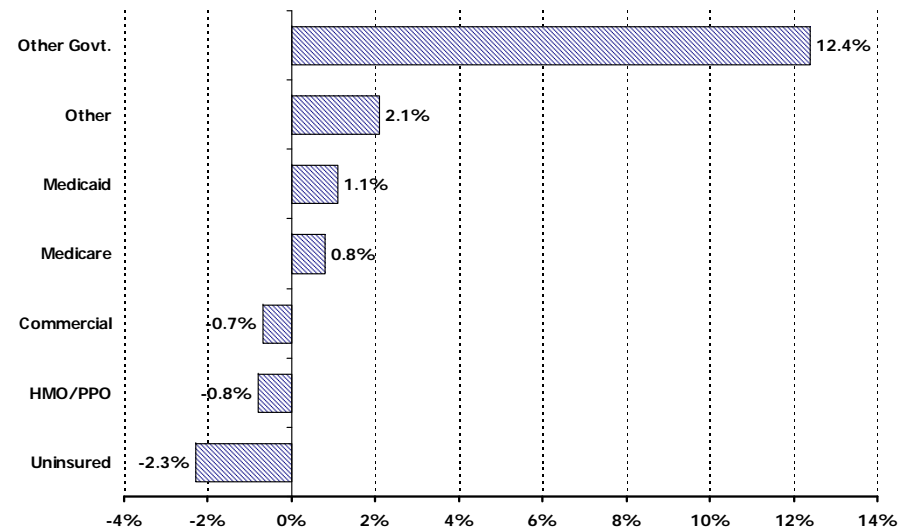


Patient Days by Payer Category Twelve Months Ending First Quarter 2008

Total Patient Days: 10,827,418



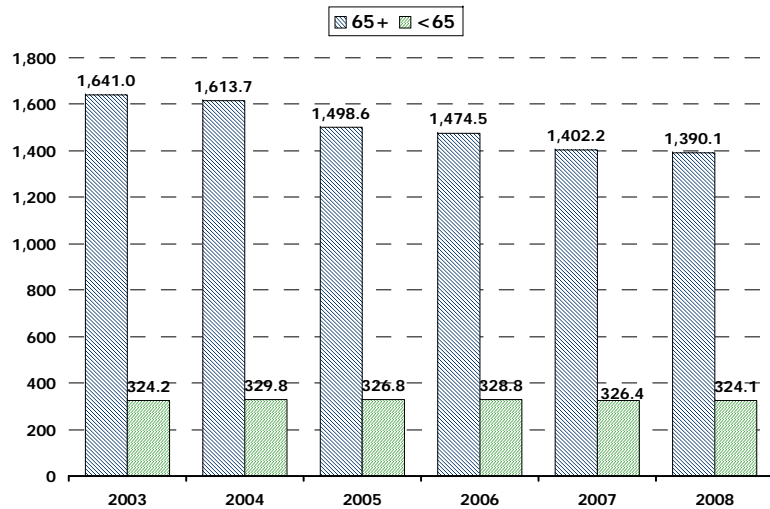
Changes in Admissions by Payer Category Twelve Months Ending First Quarter 2007 vs. First Quarter 2008



Note: Excludes newborns and neonates.

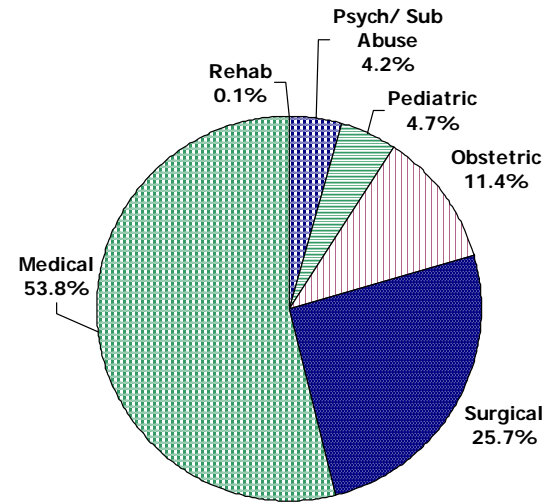
Patient Days per 1000

Twelve Months Ending First Quarter 2003 - First Quarter 2008



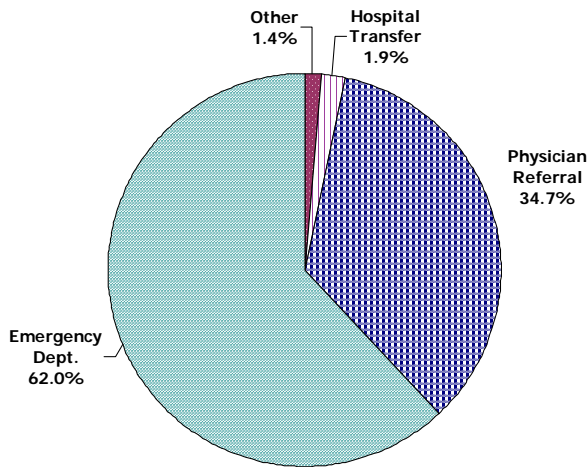
Admissions by Type of Hospital Service

Twelve Months Ending First Quarter 2008



Source of Admission to Florida Hospitals

Twelve Months Ending First Quarter 2008



Top 10 DRGs

Twelve Months Ending First Quarter 2008

Description	Discharges	ALOS	Average Charges
Normal Newborn	158,273	2.2	\$2,281
Vaginal Delivery w/o Complicating Diagnoses	120,673	2.3	\$9,088
Psychoses	92,637	8.0	\$13,746
Heart Failure & Shock	63,704	4.9	\$26,460
Cesarean Section w/o CC	62,902	3.0	\$15,938
Major Joint Replacement or Reattachment of Lower Exremity	54,572	4.1	\$53,992
Chest Pain	54,061	1.9	\$16,157
Chronic Obstructive Pulmonary Disease	53,528	4.6	\$23,618
Neonate w Other Significant Problems	46,824	2.7	\$4,442
Esophagitis, Gastroent & Misc Digest Disorders w/o MCC	44,725	2.9	\$19,355
Total Top 10 DRGs	751,899	3.6	\$15,397
Total All DRGs	2,559,937	4.7	\$32,587

Sources: FHA Eye on the Market: Hospital Utilization Report, First Quarter 2007, February 2008
 AHCA Inpatient Discharge Data, short-term acute care hospitals, 12 months ending March 2003 - March 2007

For questions or comments, contact Debbie Hegarty, Surveys/Special Projects Manager at (407) 841-6230 or debbieh@fha.org. FHA has a full line of market share reports available and can produce custom reports as well. Contact Debbie for details.

This information is from "FHA Eye on the Market: Hospital Inpatient Utilization Report, First Quarter 2008, January 2009," which includes data on individual hospitals. To order a copy of the report, please contact FHA Data Services at (407) 841-6230 or see attached order form.