

Inpatient Use in Florida Hospitals

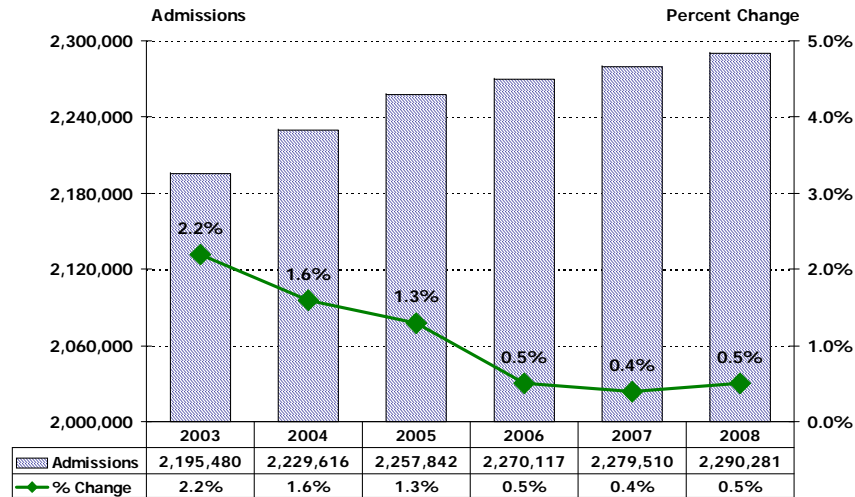
(based on data through December 31, 2008)



Data Brief

Admissions to Florida Hospitals

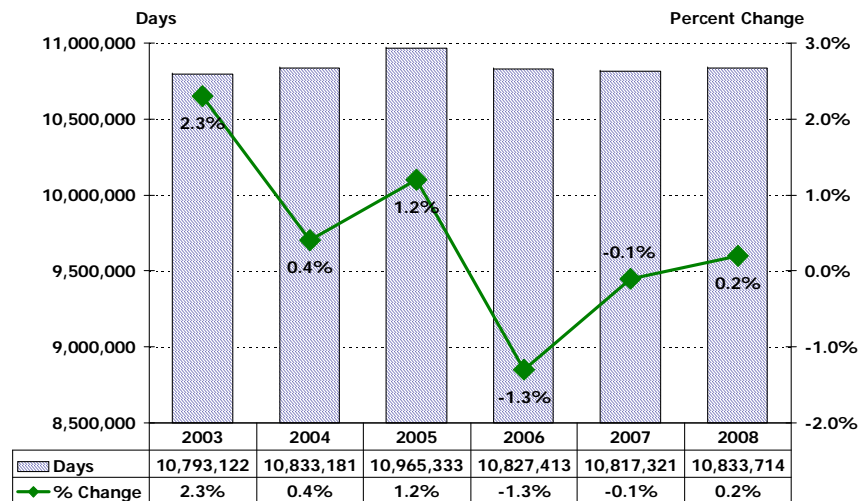
Twelve Months Ending Fourth Quarter 2003 - Fourth Quarter 2008



Note: Excludes newborns and neonates.

Inpatient Days in Florida Hospitals

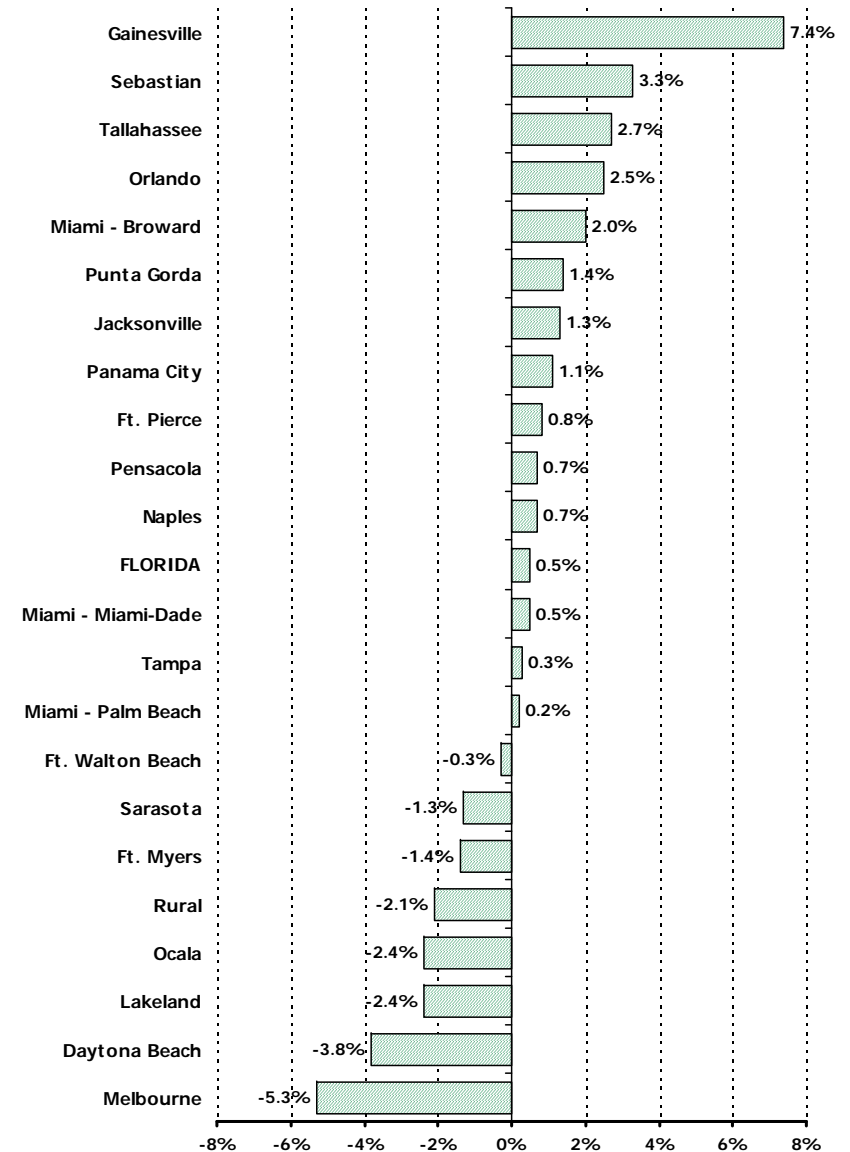
Twelve Months Ending Fourth Quarter 2003 - Fourth Quarter 2008



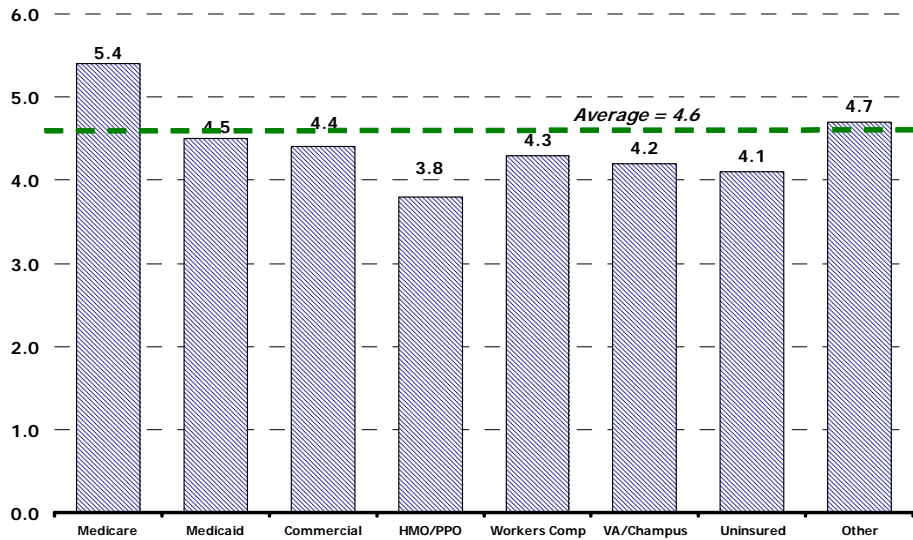
Note: Excludes newborns and neonates.

Change in Admissions by MSA

Twelve Months Ending Fourth Quarter, 2007 vs. Fourth Quarter 2008

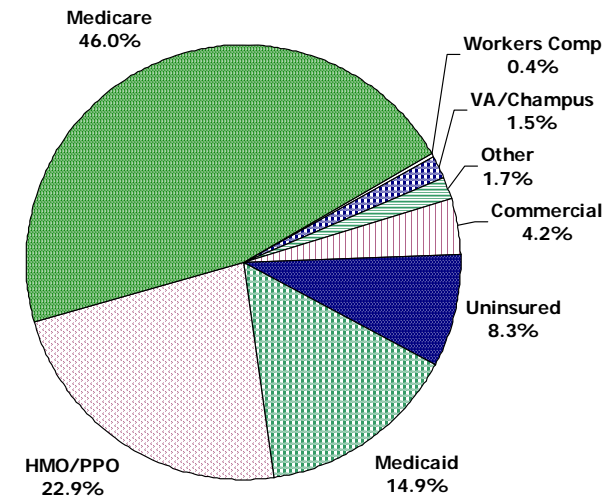


Average Length of Stay by Payer Twelve Months Ending Fourth Quarter 2008



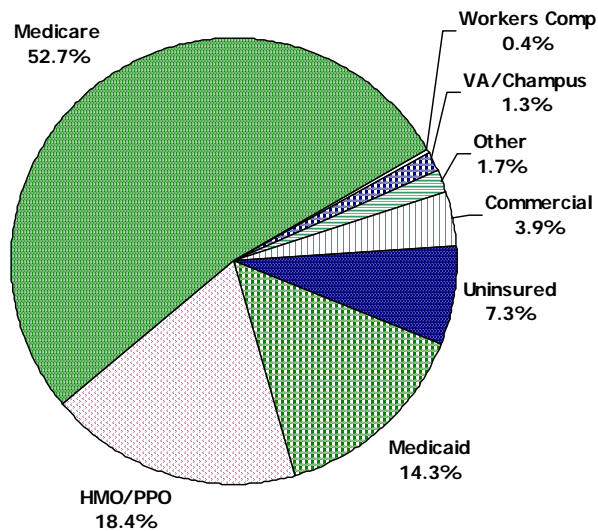
Admissions by Payer Category Twelve Months Ending Fourth Quarter 2008

Total Admissions: 2,290,281

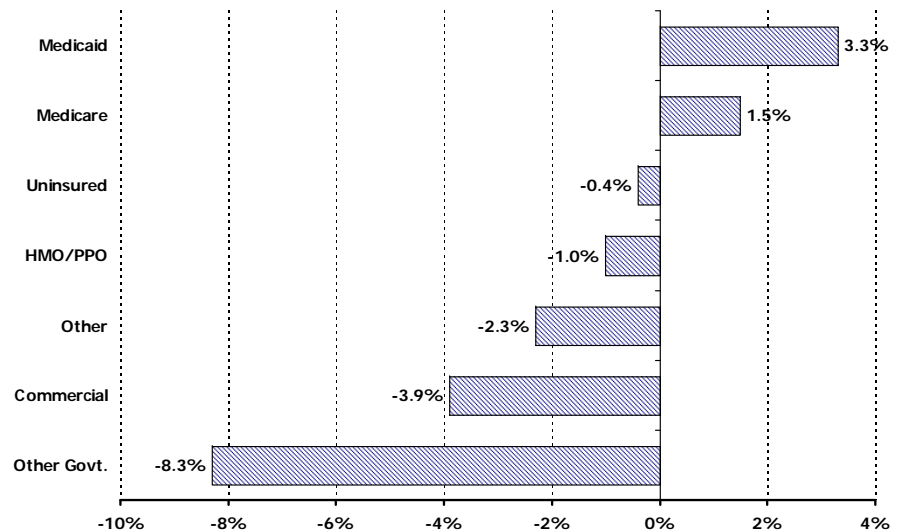


Patient Days by Payer Category Twelve Months Ending Fourth Quarter 2008

Total Patient Days: 10,833,714



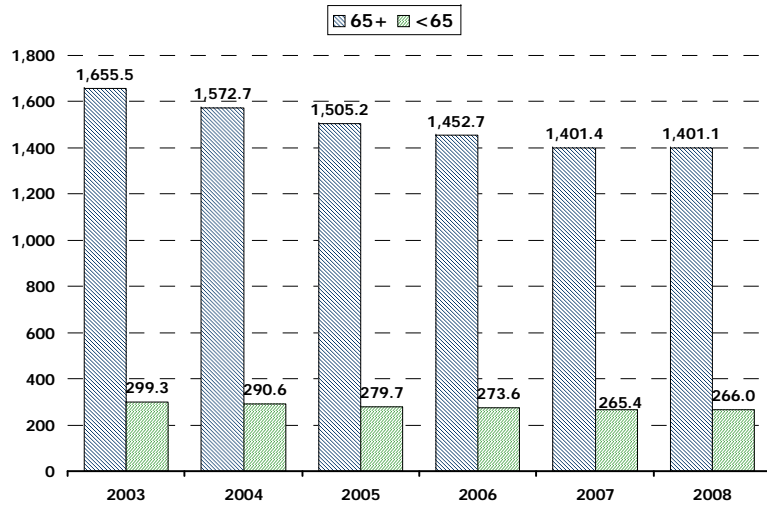
Changes in Admissions by Payer Category Twelve Months Ending Fourth Quarter 2007 vs. Fourth Quarter 2008



Note: Excludes newborns and neonates.

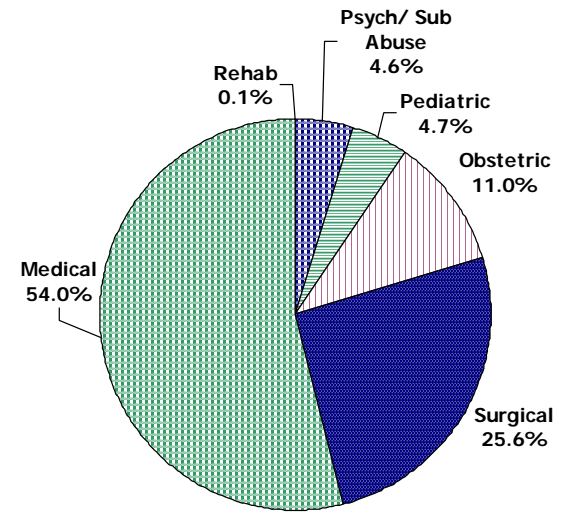
Patient Days per 1000

Twelve Months Ending Fourth Quarter 2003 - Fourth Quarter 2008



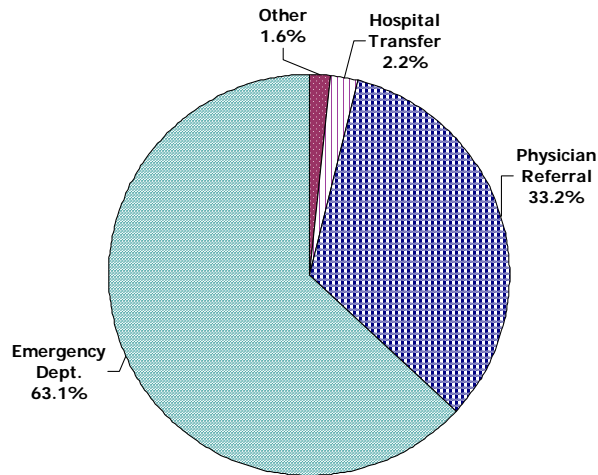
Admissions by Type of Hospital Service

Twelve Months Ending Fourth Quarter 2008



Source of Admission to Florida Hospitals

Twelve Months Ending Fourth Quarter 2008



Top 10 DRGs

Twelve Months Ending Fourth Quarter 2008

Description	Discharges	ALOS	Average Charges
Normal newborn	149,767	2.2	\$2,621
Vaginal delivery w/o complicating diagnoses	116,268	2.3	\$9,557
Psychoses	94,484	7.8	\$13,862
Esophagitis, gastroent & misc digest disorders w/o MCC	65,300	3.1	\$20,813
Cesarean section w/o CC/MCC	56,758	2.9	\$16,769
Major joint replacement/reattachment of lower extremity w/o MCC	53,125	3.7	\$53,956
Chest pain	49,216	1.8	\$17,345
Neonate w other significant problems	47,661	2.6	\$4,744
Cellulitis w/o MCC	34,924	4.0	\$18,765
Circulatory disorders except AMI, w card cath w/o MCC	30,399	3.0	\$35,094
Total Top 10 DRGs	697,902	3.3	\$15,464
Total All DRGs	2,563,731	4.7	\$34,760

Sources: FHA Eye on the Market: Hospital Utilization Report, Fourth Quarter 2008, August 2009
 AHCA Inpatient Discharge Data, short-term acute care hospitals, 12 months ending December 2003 - December 2008

For questions or comments, contact Debbie Hegarty, Surveys/Special Projects Manager at (407) 841-6230 or debbieh@fha.org. FHA has a full line of market share reports available and can produce custom reports as well. Contact Debbie for details.

This information is from "FHA Eye on the Market: Hospital Inpatient Utilization Report, Fourth Quarter 2009, August 2009," which includes data on individual hospitals. To order a copy of the report, please contact FHA Data Services at (407) 841-6230 or see attached order form.