

Inpatient Use in Florida Hospitals

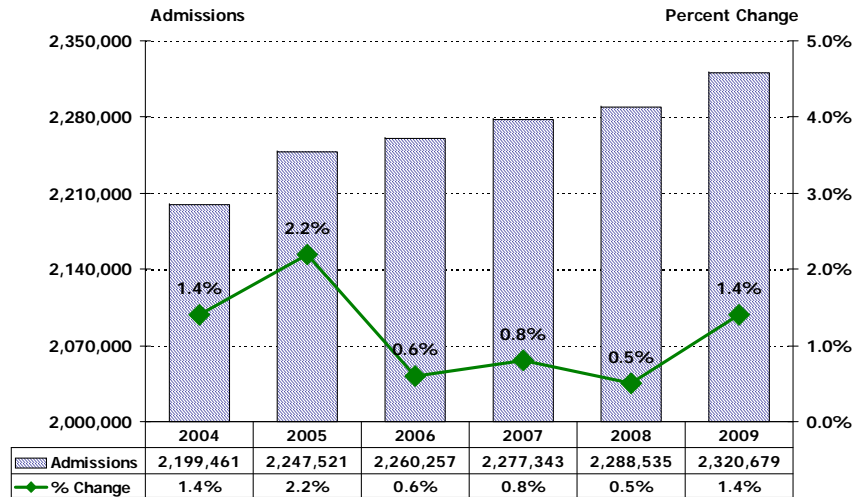
(based on data through September 30, 2009)



Data Brief

Admissions to Florida Hospitals

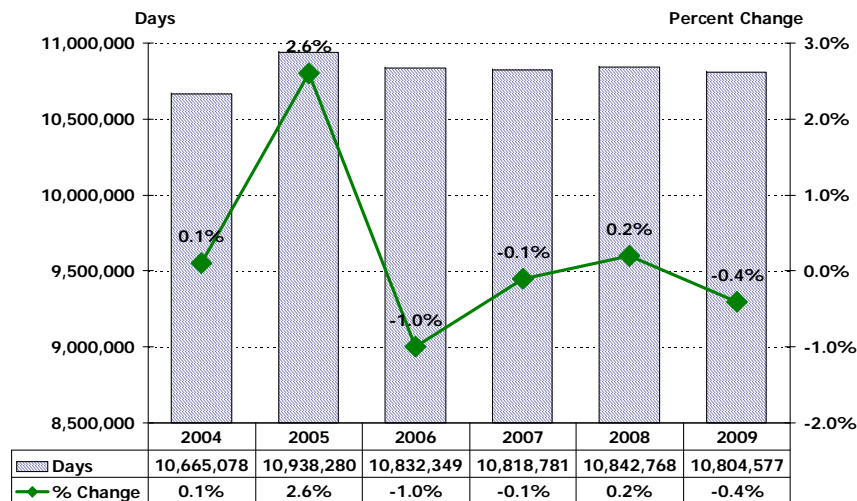
Twelve Months Ending Third Quarter 2004 - Third Quarter 2009



Note: Excludes newborns and neonates.

Inpatient Days in Florida Hospitals

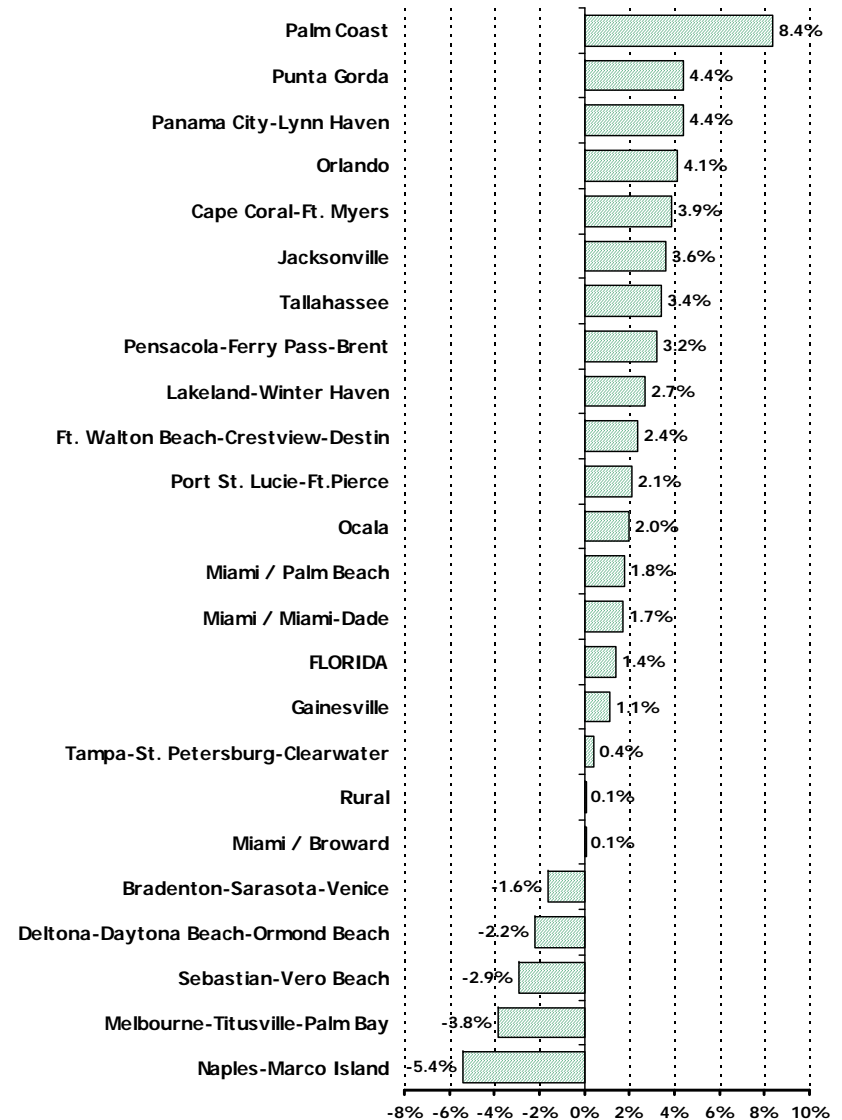
Twelve Months Ending Third Quarter 2004 - Third Quarter 2009



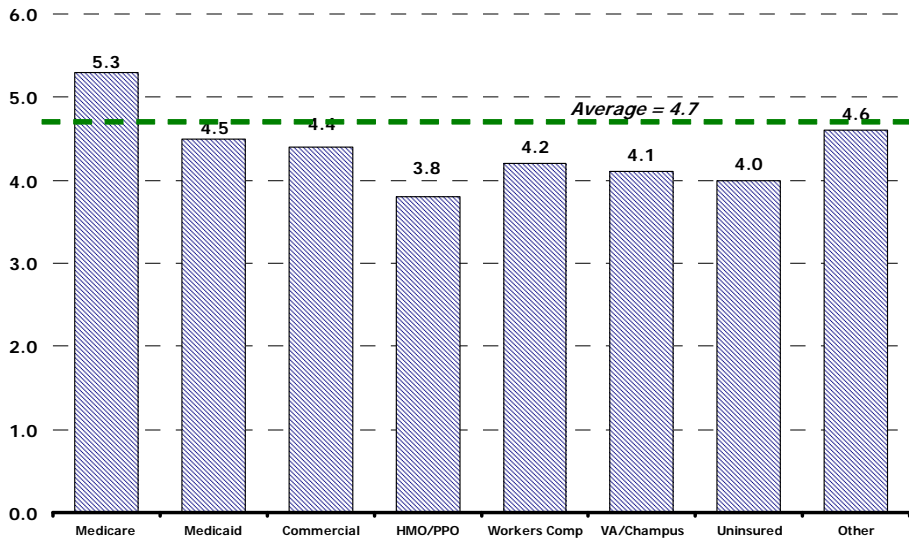
Note: Excludes newborns and neonates.

Change in Admissions by MSA

Twelve Months Ending Third Quarter 2008 vs. Third Quarter 2009

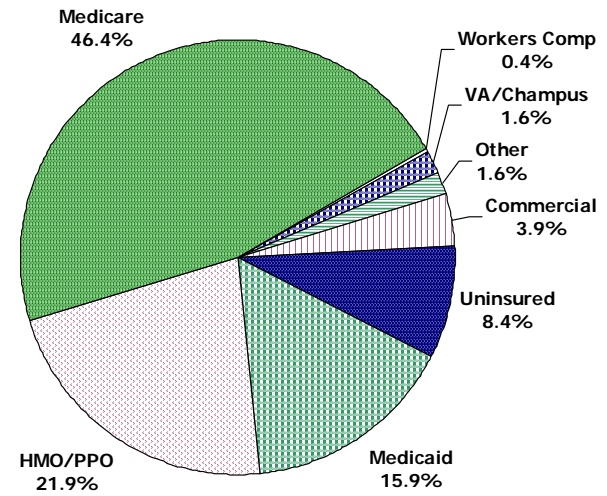


Average Length of Stay by Payer Twelve Months Ending Third Quarter 2009



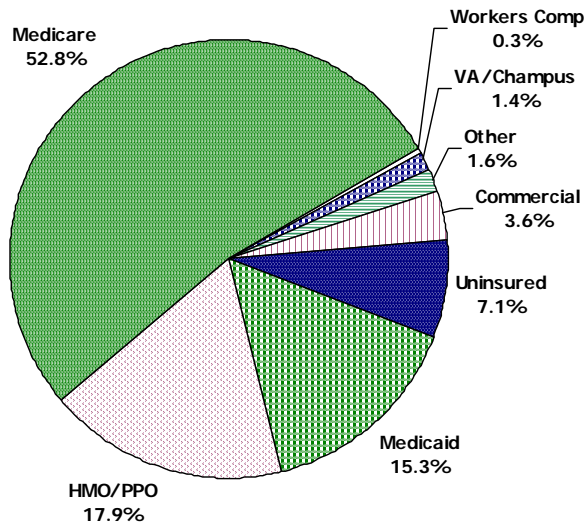
Admissions by Payer Category Twelve Months Ending Second Third 2009

Total Admissions: 2,320,679

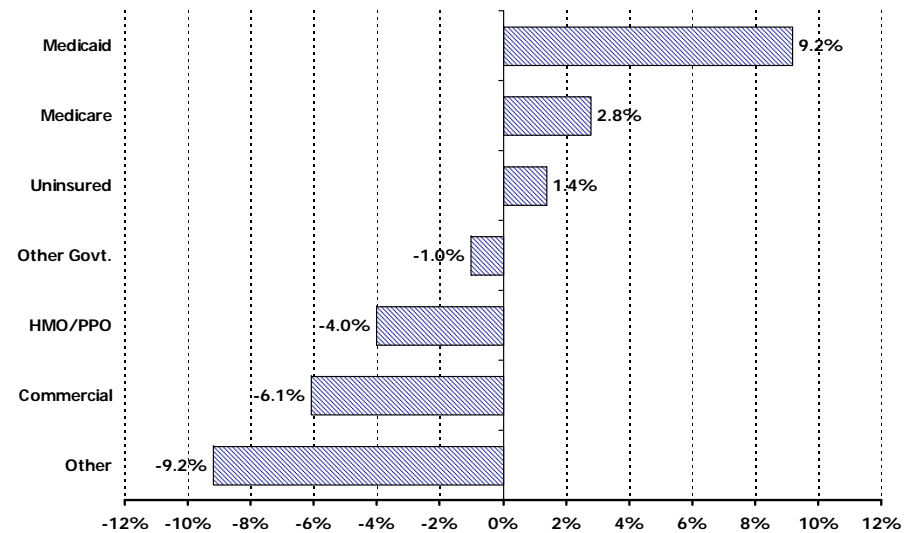


Patient Days by Payer Category Twelve Months Ending Third Quarter 2009

Total Patient Days: 10,804,577



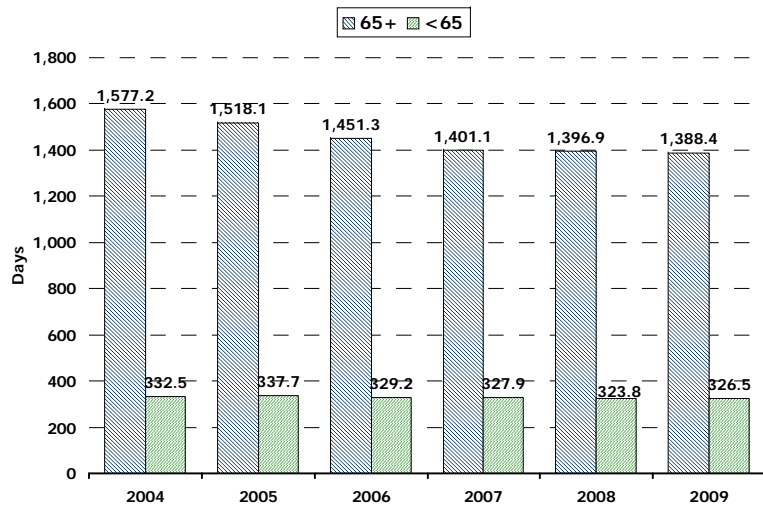
Changes in Admissions by Payer Category Twelve Months Ending Third Quarter 2008 vs. Third Quarter 2009



Note: Excludes newborns and neonates.

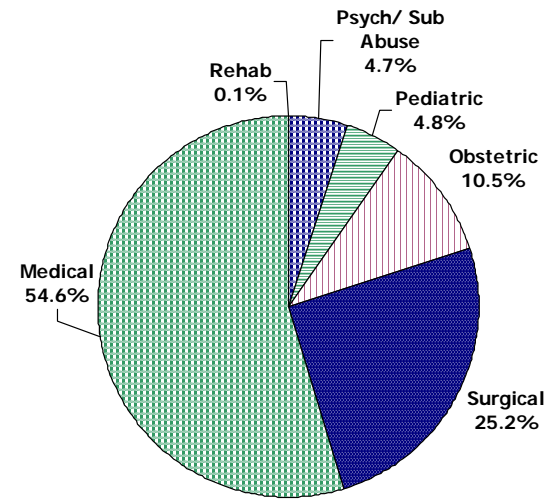
Patient Days per 1000

Twelve Months Ending Third Quarter 2004 - Third Quarter 2009



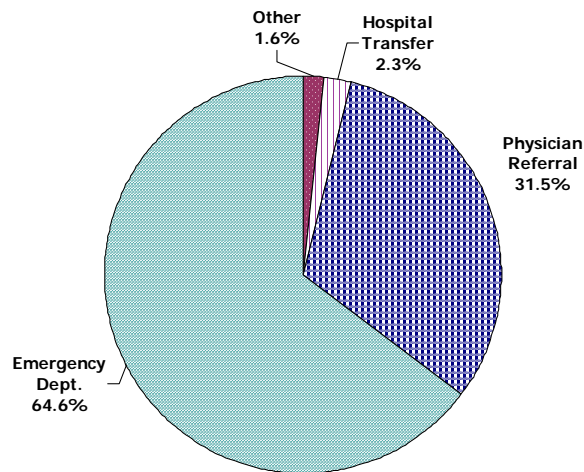
Admissions by Type of Hospital Service

Twelve Months Ending Third Quarter 2009



Source of Admission to Florida Hospitals

Twelve Months Ending Third Quarter 2009



Top 10 DRGs

Twelve Months Ending Third Quarter 2009

Description	Discharges	ALOS	Average Charges
Normal newborn	144,706	2.2	\$2,551
Vaginal delivery w/o complicating diagnoses	111,444	2.3	\$10,170
Psychoses	98,504	7.6	\$14,172
Esophagitis, gastroent & misc digest disorders w/o MCC	66,972	3.0	\$22,200
Cesarean section w/o CC/MCC	55,604	2.9	\$18,095
Major joint replacement or reattachment of lower extremity w/o MCC	52,867	3.6	\$56,244
Chest pain	49,164	1.8	\$18,571
Neonate w other significant problems	45,943	2.7	\$4,767
Cellulitis w/o MCC	35,876	3.9	\$19,801
Syncope & collapse	31,235	2.7	\$22,091
Total Top 10 DRGs	692,315	3.3	\$15,740
Total All DRGs	2,588,812	4.7	\$36,758

Sources: FHA Eye on the Market: Hospital Utilization Report, Third Quarter, 2009, May 2010
 AHCA Inpatient Discharge Data, short-term acute care hospitals, 12 months ending September 2004 - September 2009

For questions or comments, contact Debbie Hegarty, Surveys/Special Projects Manager at (407) 841-6230 or debbieh@fha.org. FHA has a full line of market share reports available and can produce custom reports as well. Contact Debbie for details.

This information is from "FHA Eye on the Market: Hospital Inpatient Utilization Report, Third Quarter 2009, May 2009," which includes data on individual hospitals. To order a copy of the report, please contact FHA Data Services at (407) 841-6230 or see attached order form.