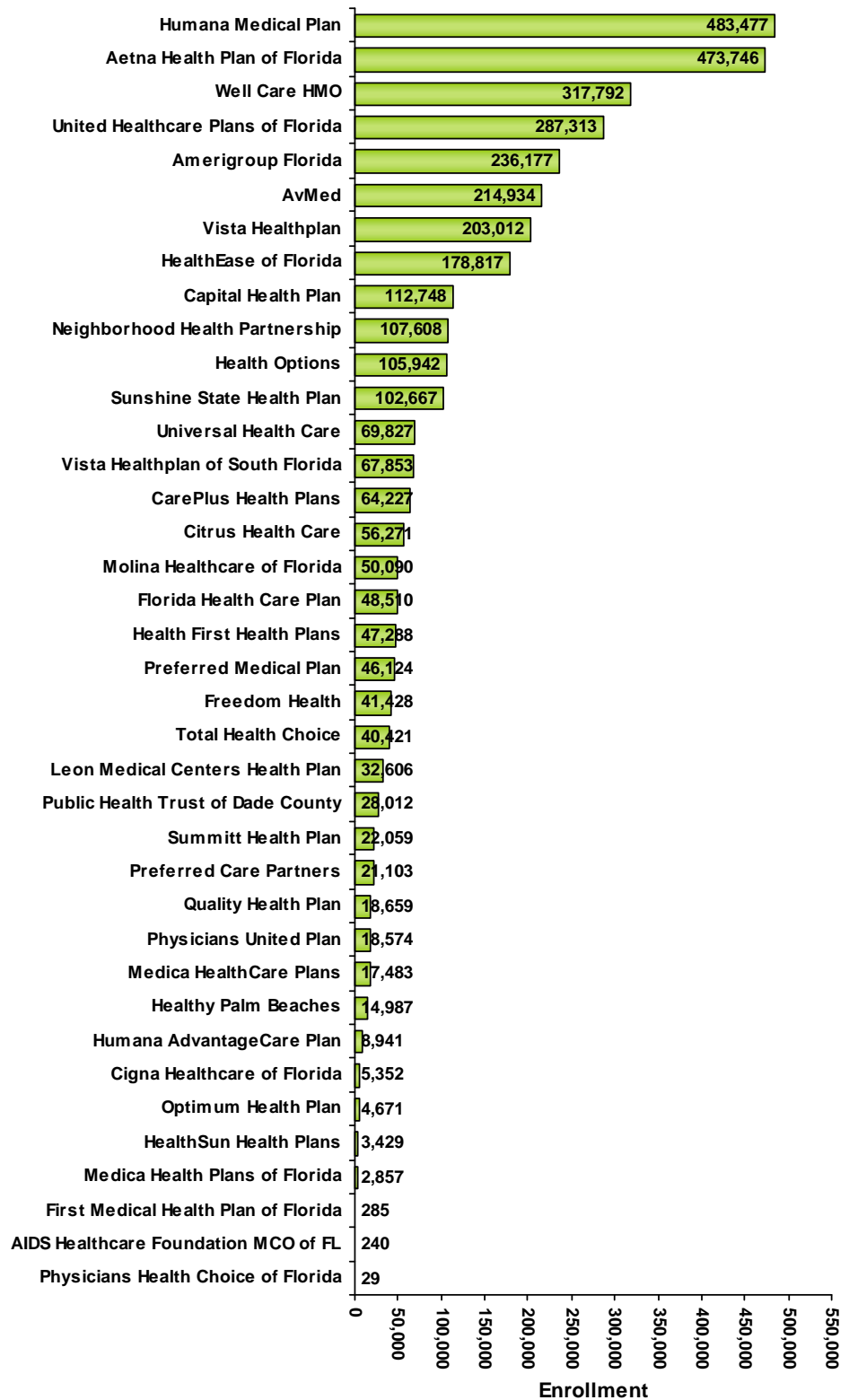


HMO Trends in Florida

(based on fiscal year end data 2004 to 2009)

Enrollment in Florida's HMOs Fiscal Year 2009

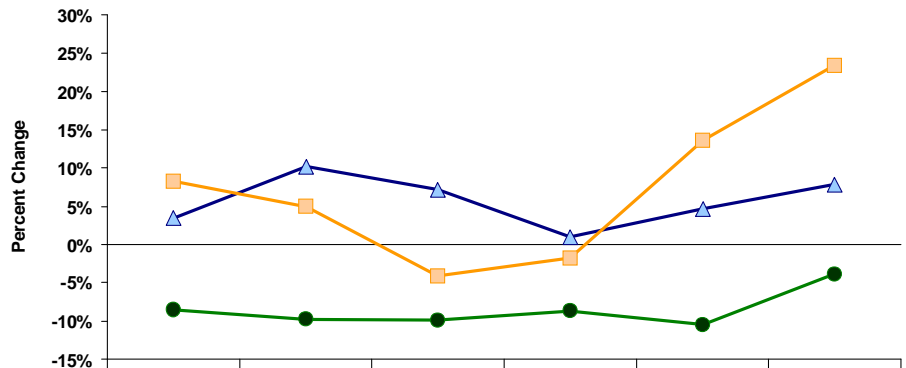


Source: FHA Eye on the Market: HMO Indicators Report, FY04-FY09

HMO Trends in Florida

(based on fiscal year end data 2004 to 2009)

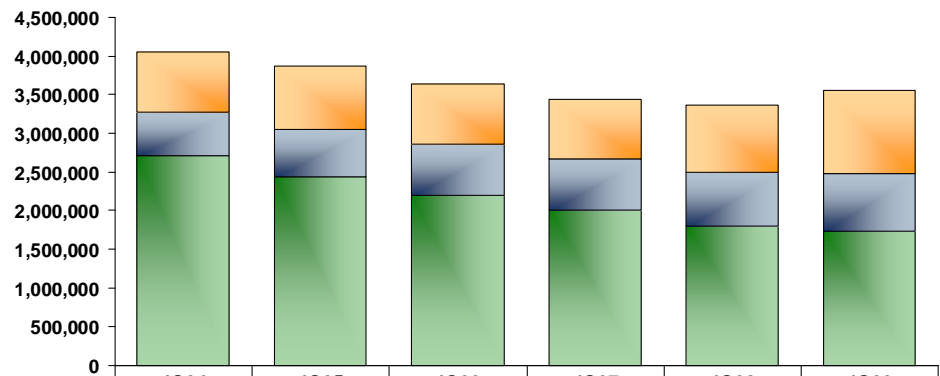
Percent Change in HMO Enrollment FY04 - FY09



	4Q04	4Q05	4Q06	4Q07	4Q08	4Q09
Commercial	-8.5%	-9.8%	-9.9%	-8.7%	-10.4%	-3.9%
Medicare	3.5%	10.2%	7.2%	0.9%	4.7%	7.8%
Medicaid	8.3%	5.0%	-4.1%	-1.8%	13.6%	23.4%

Floridians in HMOs FY04 - FY09

Total HMO Enrollment: 3,367,862



	4Q04	4Q05	4Q06	4Q07	4Q08	4Q09
Medicaid	775,876	814,786	781,700	767,278	871,274	1,075,243
Medicare	556,960	613,751	657,891	663,688	695,152	749,431
Commercial	2,711,833	2,445,075	2,201,868	2,010,092	1,801,436	1,730,885

Net Income in Florida's HMOs FY04 - FY09

Total Net Income: \$573,822,766

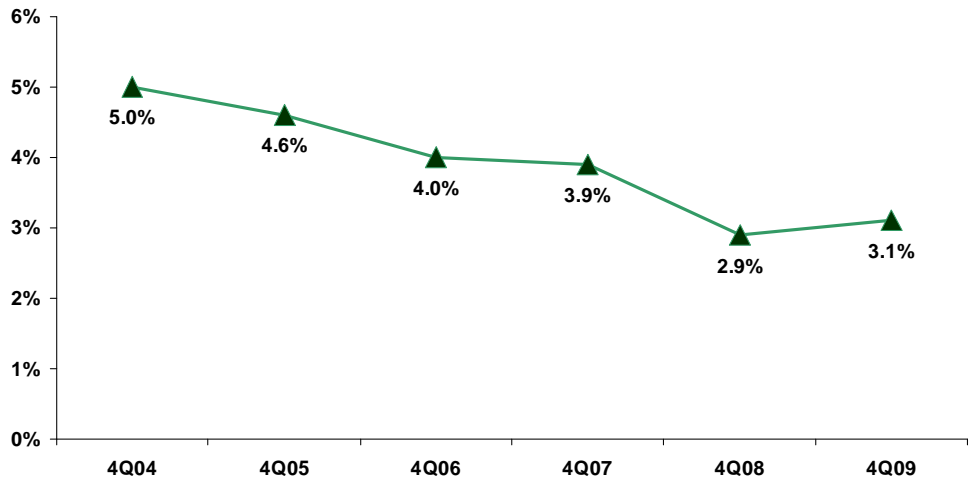


Source: FHA Eye on the Market: HMO Indicators Report, FY04-FY09

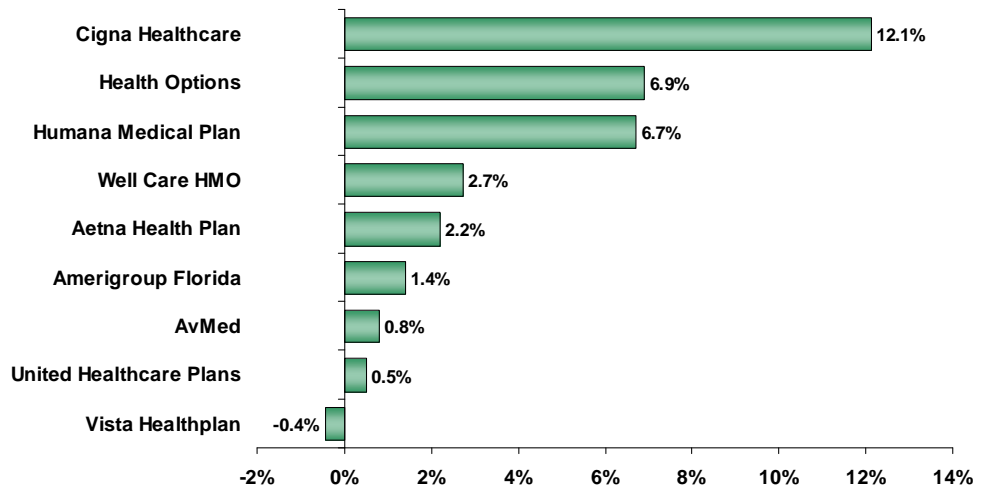
HMO Trends in Florida

(based on fiscal year end data 2004 to 2009)

Profit Margin in Florida's HMOs FY04 - FY09

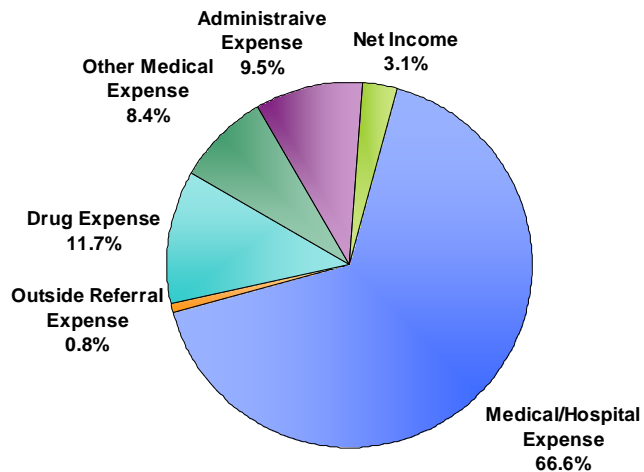


Profit Margins for Select HMOs Fiscal Year 2009



How the HMO Premium is Allocated Fiscal Year 2009

Total Premiums YTD:
\$18,756,061,368



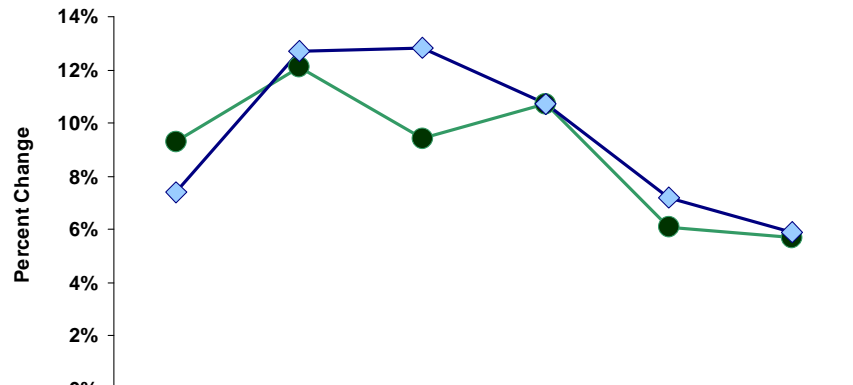
Source: FHA Eye on the Market: HMO Indicators Report, FY04-FY09

HMO Trends in Florida

(based on fiscal year end data 2004 to 2009)

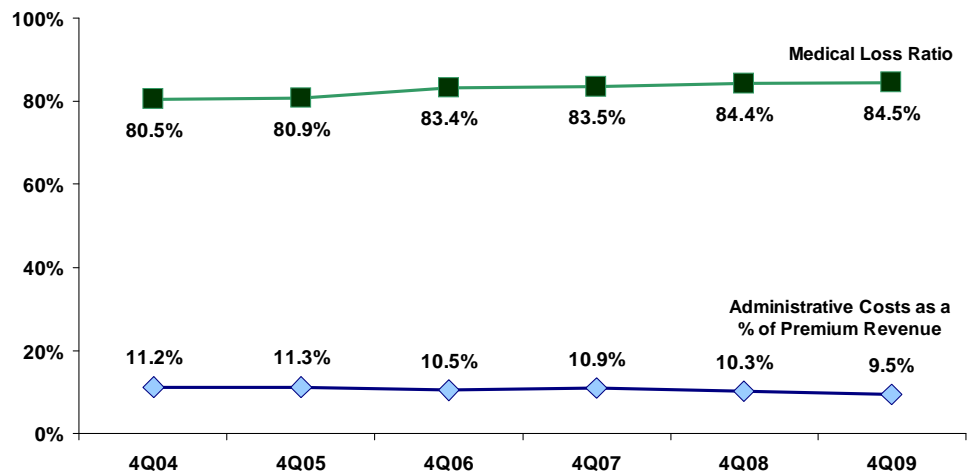


Premium Revenue & Medical Expense per Member per Month Percent Change FY04 - FY09



	4Q04	4Q05	4Q06	4Q07	4Q08	4Q09
● Premium Revenue	9.3%	12.1%	9.4%	10.7%	6.1%	5.7%
◆ Medical Expense	7.4%	12.7%	12.8%	10.7%	7.2%	5.9%

Medical Loss Ratio & Administrative Costs as a Percent of Premium Revenue FY04 - FY09



Source: FHA Eye on the Market: HMO Indicators Report, FY04-FY09

HMO Reports Available from FHA

To ORDER these reports, go to the appropriate link to download the order form or e-mail Angela Colkett at angelac@fha.org.

HMO Indicators Report: *YTD financial & utilization data*
www.fha.org/acrobat/indicatorsorder.pdf

HMO Market Share Report: *Quarterly enrollment & market penetration*
www.fha.org/acrobat/hmomarketshare.pdf

For questions or comments, contact Debbie Hegarty at (407) 841-6230 or debbieh@fha.org.