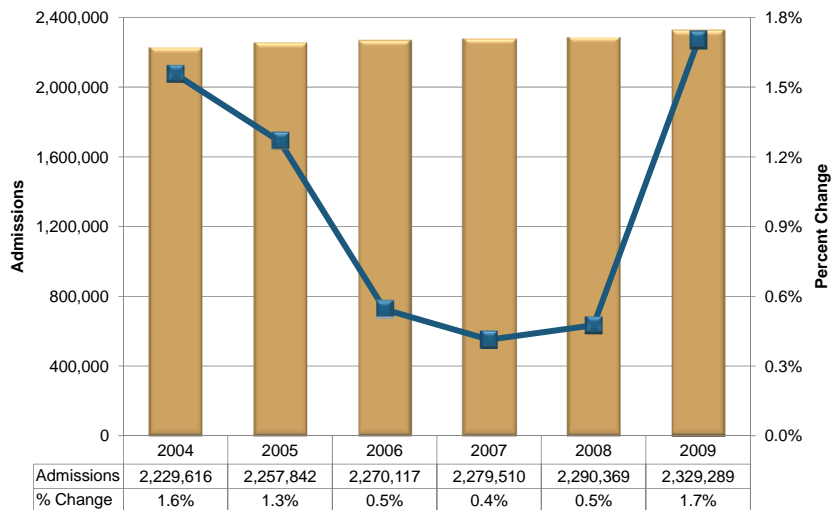


# Inpatient Use in Florida Hospitals

(based on data through December 31, 2009)

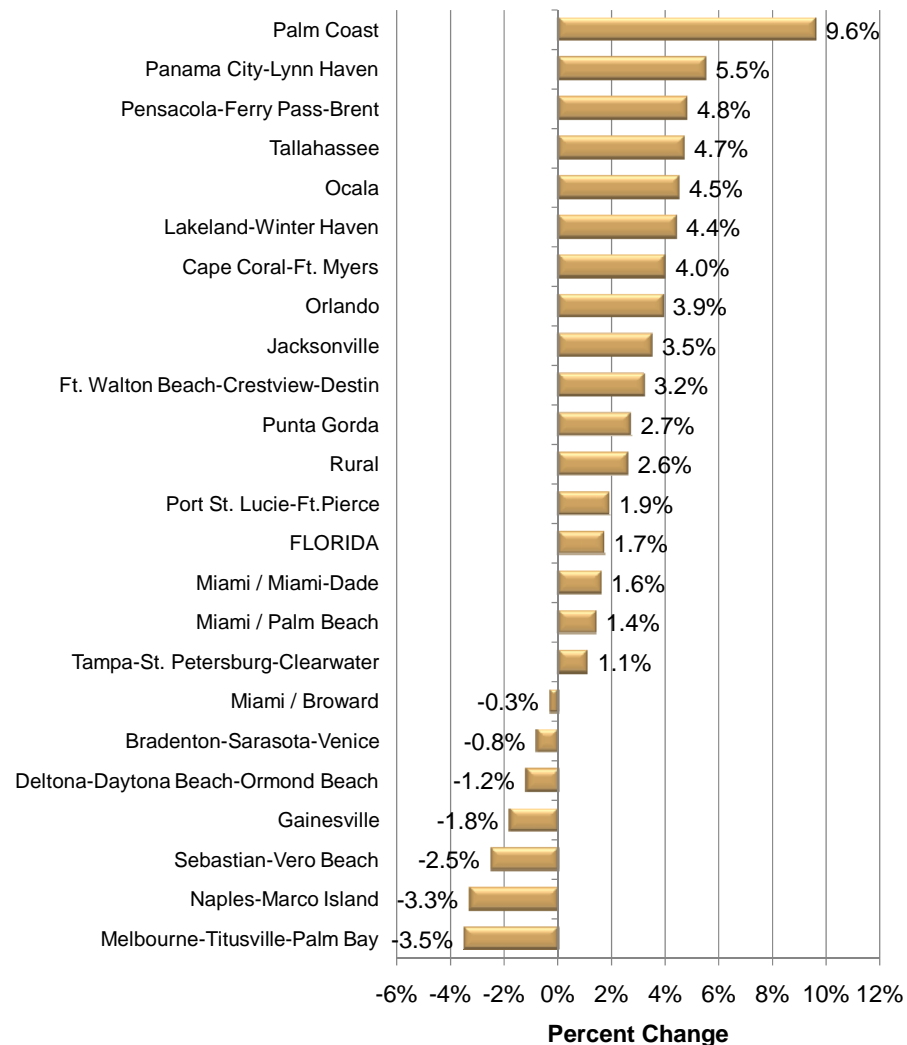
## Admissions to Florida Hospitals

Twelve Months Ending Fourth Quarter 2004 – Fourth Quarter 2009



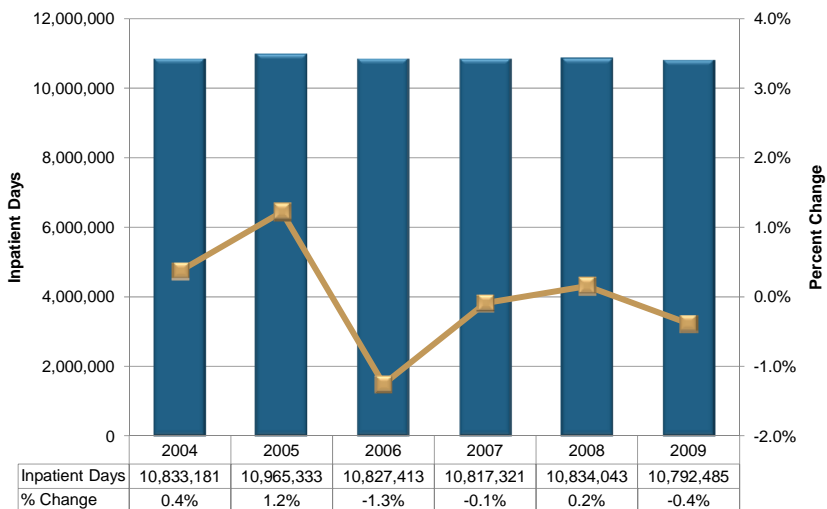
## Change in Admissions by MSA

Twelve Months Ending Fourth Quarter 2008 – Fourth Quarter 2009



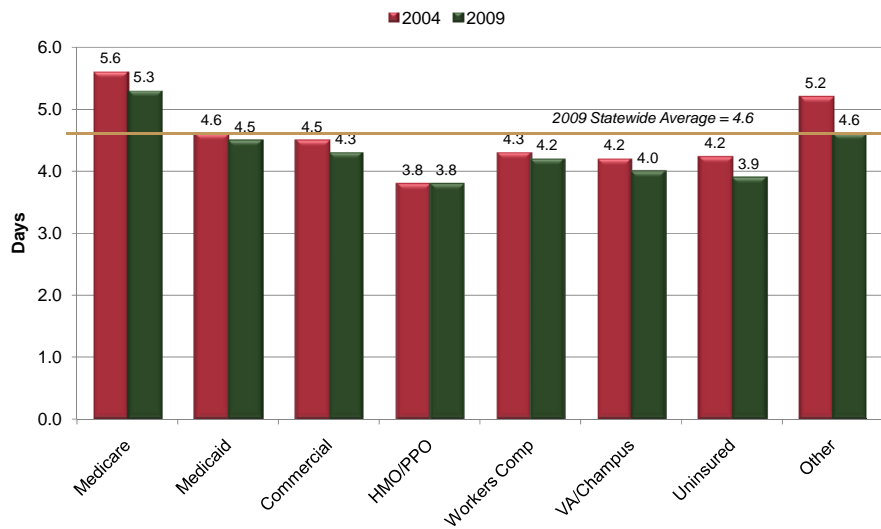
## Inpatient Days in Florida Hospitals

Twelve Months Ending Fourth Quarter 2004 – Fourth Quarter 2009



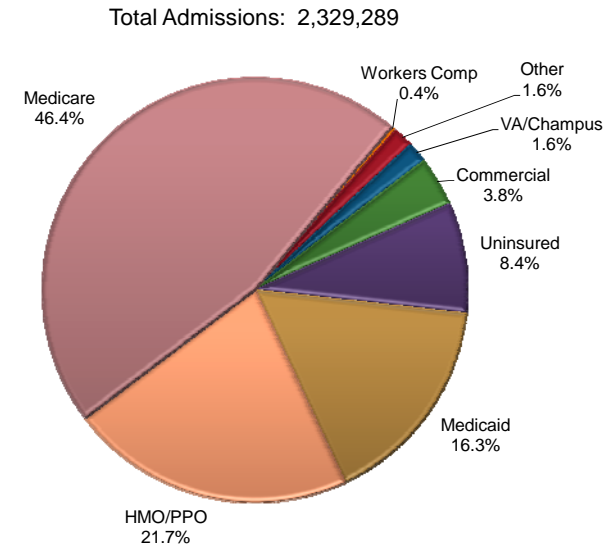
## Average Length of Stay by Payer

Twelve Months Ending Fourth Quarter 2008 vs. Fourth Quarter 2009



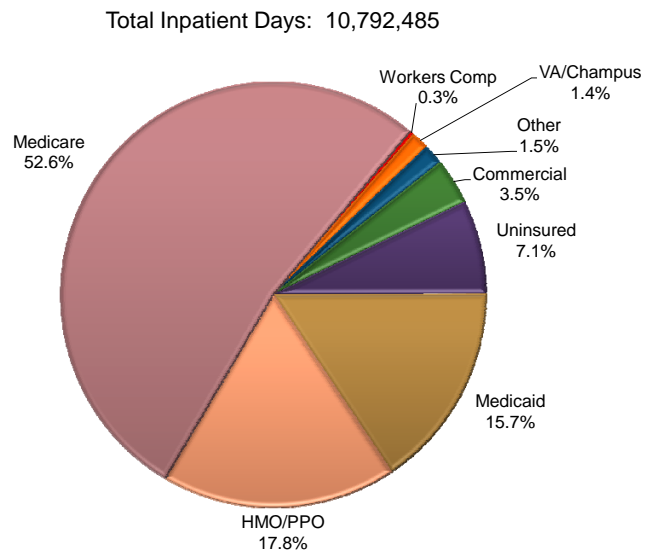
## Admissions by Payer Category

Twelve Months Ending Fourth Quarter 2009



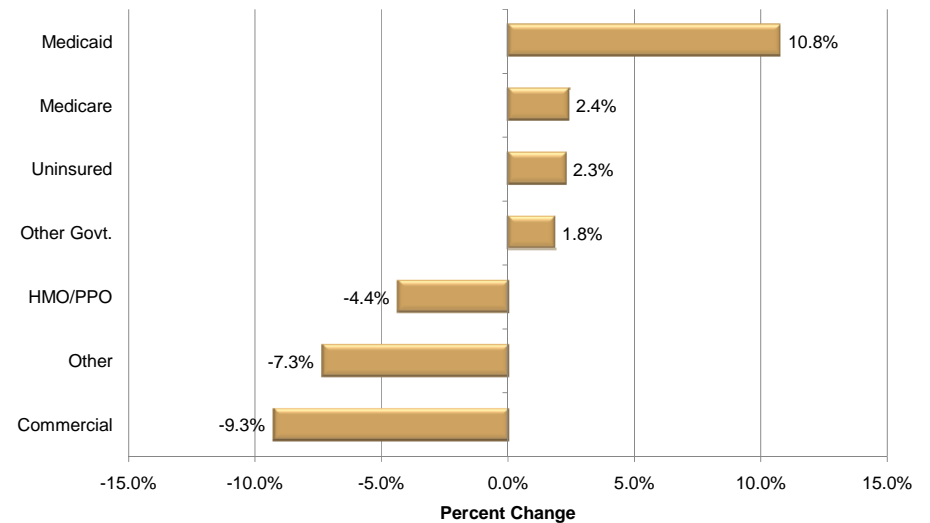
## Inpatient Days by Payer Category

Twelve Months Ending Fourth Quarter 2009



## Changes in Admissions by Payer Category

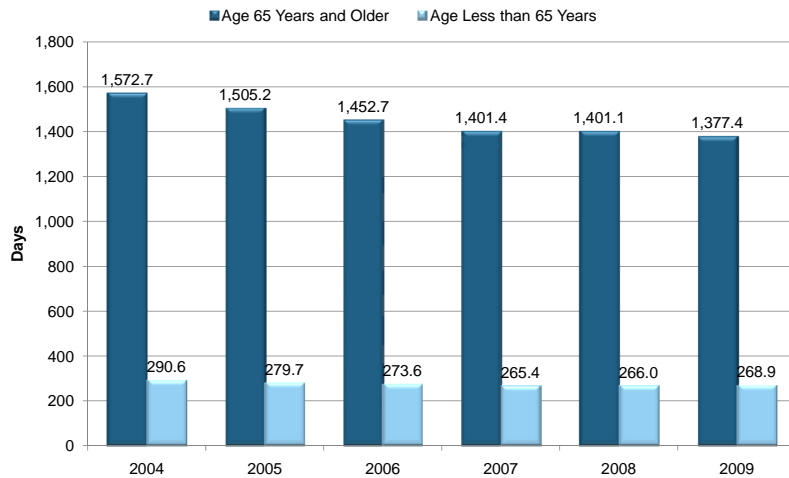
Twelve Months Ending Fourth Quarter 2008 vs. Fourth Quarter 2009



Note: Excludes newborns and neonates

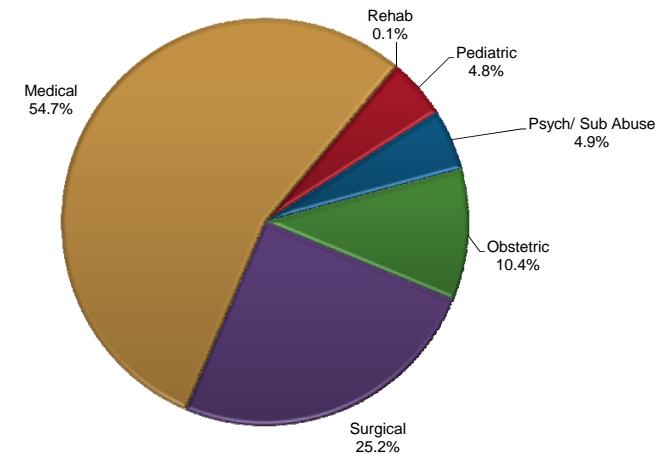
## Patient Days per 1,000

Twelve Months Ending Fourth Quarter 2004 – Fourth Quarter 2009



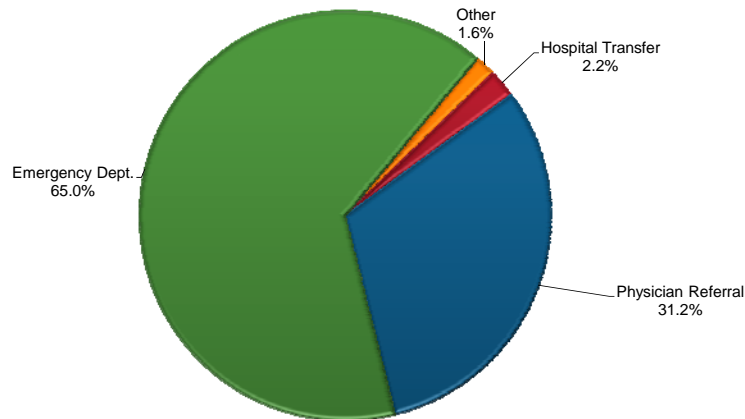
## Admissions by Type of Hospital Service

Twelve Months Ending Fourth Quarter 2009



## Source of Admission to Florida Hospitals

Twelve Months Ending Fourth Quarter 2009



## Top Ten DRGs

Twelve Months Ending Fourth Quarter 2009

Description	Discharges	Average	
		ALOS	Charges
Normal newborn	143,865	2.2	\$2,456
Vaginal delivery w/o complicating diagnoses	110,322	2.3	\$10,434
Psychoses	101,755	7.5	\$14,360
Esophagitis, gastroent & misc digest disorders w/o MCC	68,204	3.0	\$22,531
Cesarean section w/o CC/MCC	55,560	2.9	\$18,558
Major joint replacement or reattachment of lower extremity w/o MCC	54,265	3.6	\$56,734
Chest pain	49,466	1.8	\$18,723
Neonate w other significant problems	45,501	2.7	\$4,831
Cellulitis w/o MCC	36,122	3.9	\$20,065
Syncope & collapse	31,340	2.7	\$22,376
<b>Total Top 10 DRGs</b>	<b>696,400</b>	<b>3.3</b>	<b>\$16,060</b>
<b>Total All DRGs</b>	<b>2,596,906</b>	<b>4.7</b>	<b>\$37,294</b>

Sources: FHA Eye on the Market: Hospital Utilization Report, Fourth Quarter 2009, August 2010  
 AHCA Inpatient Discharge Data, short-term acute care hospitals, 12 months ending December 2004 - December 2009

This information is from "FHA Eye on the Market: Hospital Inpatient Utilization Report, Fourth Quarter 2009, August 2010," which includes data on individual hospitals. To order a copy of the report, please contact FHA Data Services at (407) 841-6230 or see attached order form.

For questions or comments, contact Debbie Hegarty, Surveys/Special Projects Manager at (407) 841-6230 or debbieh@fha.org. FHA has a full line of market share reports available and can produce custom reports as well. Contact Debbie for details.