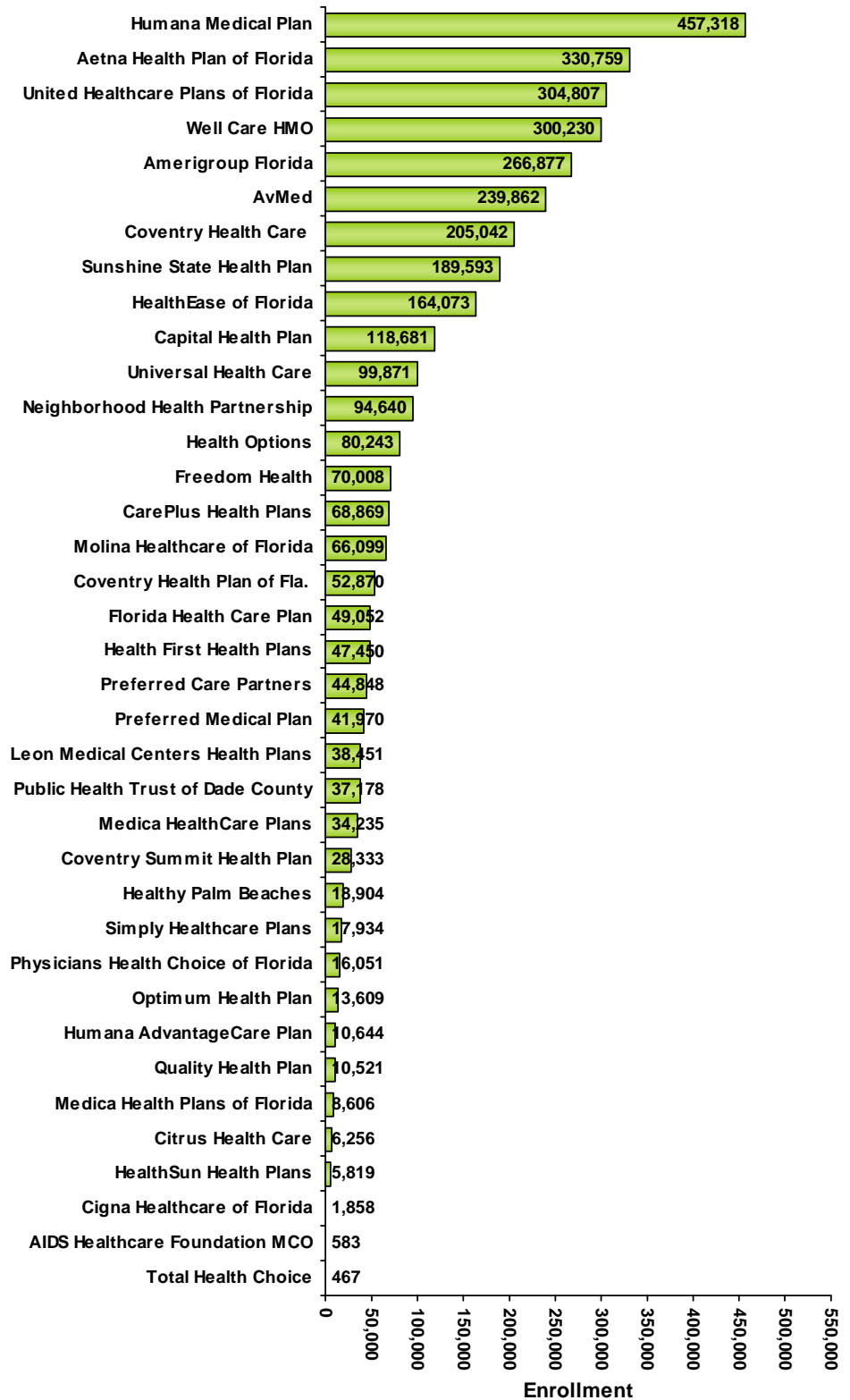


HMO Trends in Florida

(based on second quarter data 2006 to 2011)

Enrollment in Florida's HMOs Second Quarter 2011

Total HMO Enrollment: 3,542,611

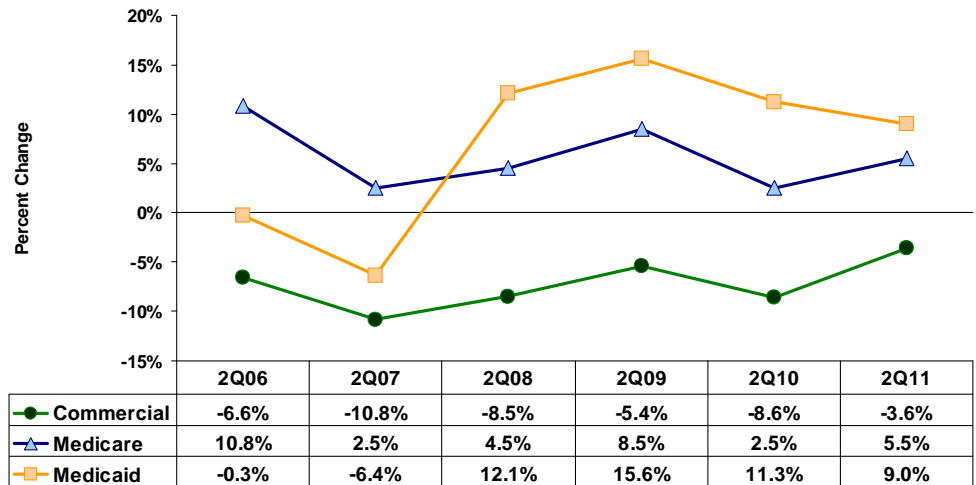


Sources: FHA Eye on the Market: HMO Indicators Report, 2Q06 - 2Q11
 FHA Eye on the Market: HMO Market Share Report, 2Q06 - 2Q11

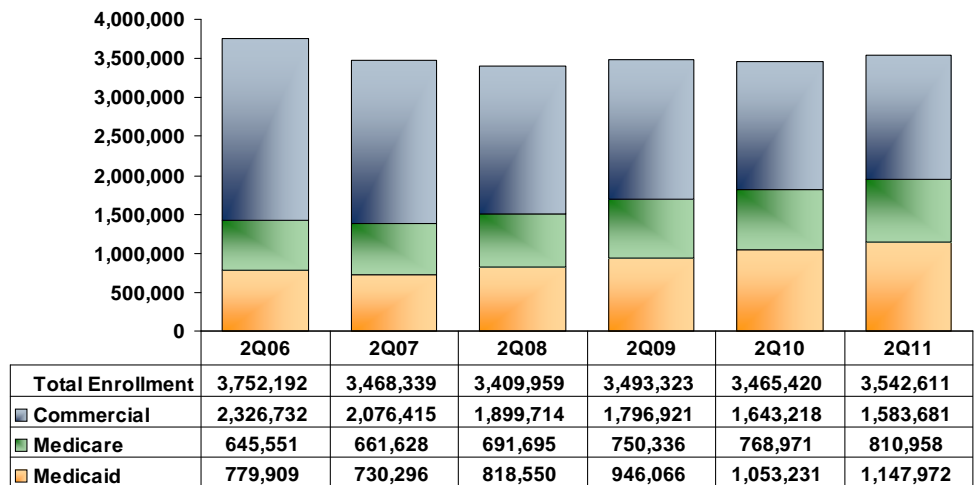
HMO Trends in Florida

(based on second quarter data 2006 to 2011)

Percent Change in HMO Enrollment 2Q06 - 2Q11



Floridians in HMOs 2Q06 - 2Q11



Net Income in Florida's HMOs 2Q06 - 2Q11

Total Net Income: \$379,247,535



Note: Data includes all plans reporting for given year.

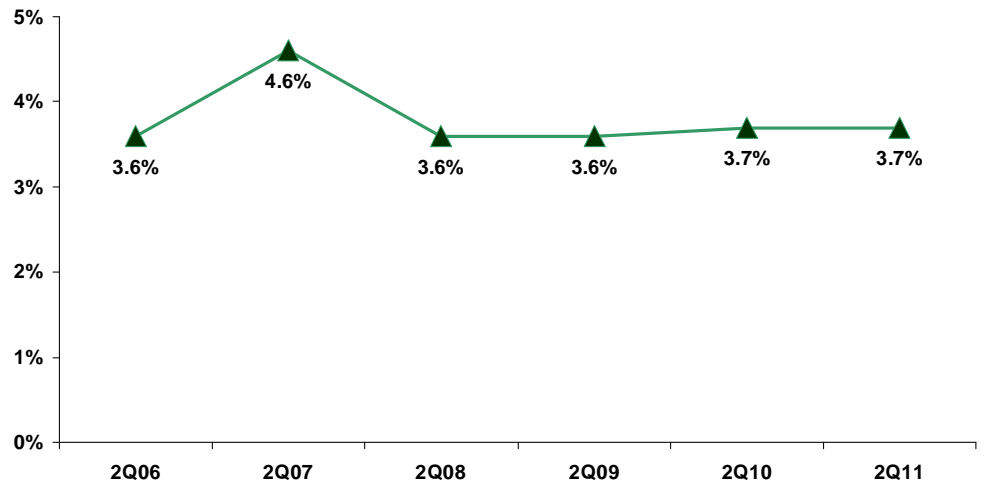
Sources: FHA Eye on the Market: HMO Indicators Report, 2Q06 - 2Q11

FHA Eye on the Market: HMO Market Share Report, 2Q06 - 2Q11

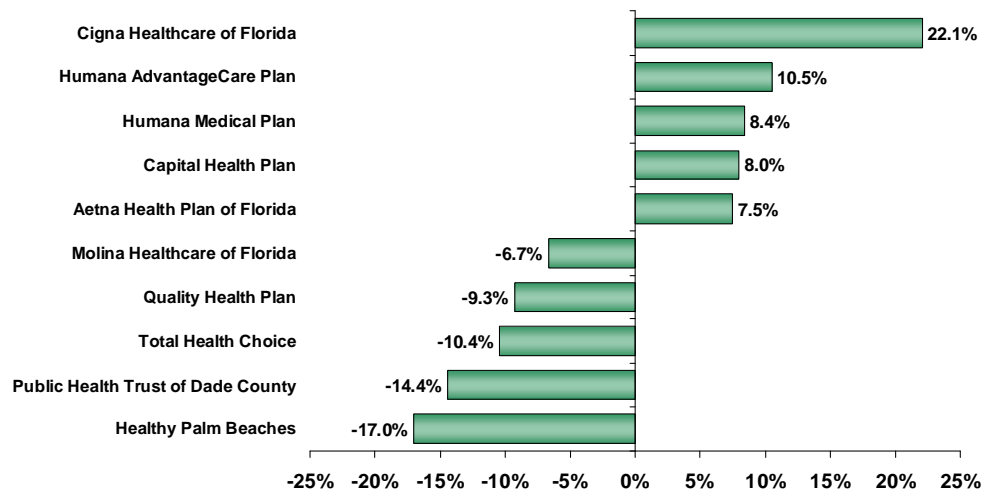
HMO Trends in Florida

(based on second quarter data 2006 to 2011)

Profit Margin in Florida's HMOs 2Q06 - 2Q11

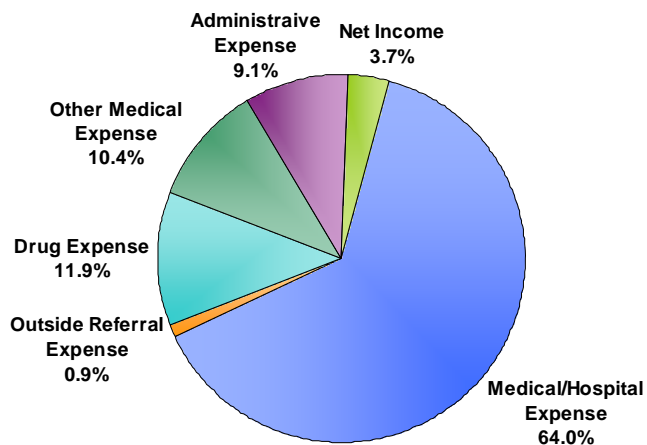


Profit Margins for the Most and Least Profitable HMOs Second Quarter 2011



How the HMO Premium is Allocated Second Quarter 2011

Total Premiums YTD:
\$10,363,897,741

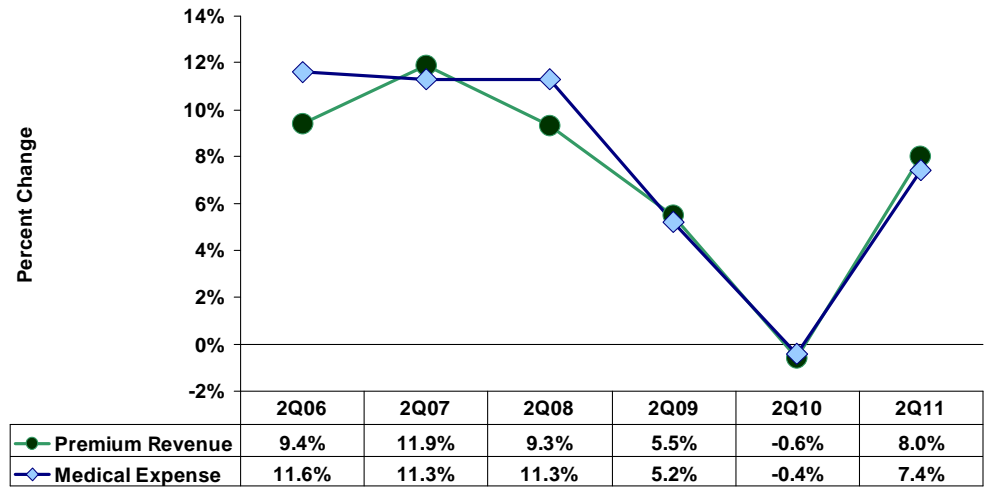


Note: Data includes all plans reporting for given year.
Source: FHA Eye on the Market: HMO Indicators Report, 2Q06 - 2Q11

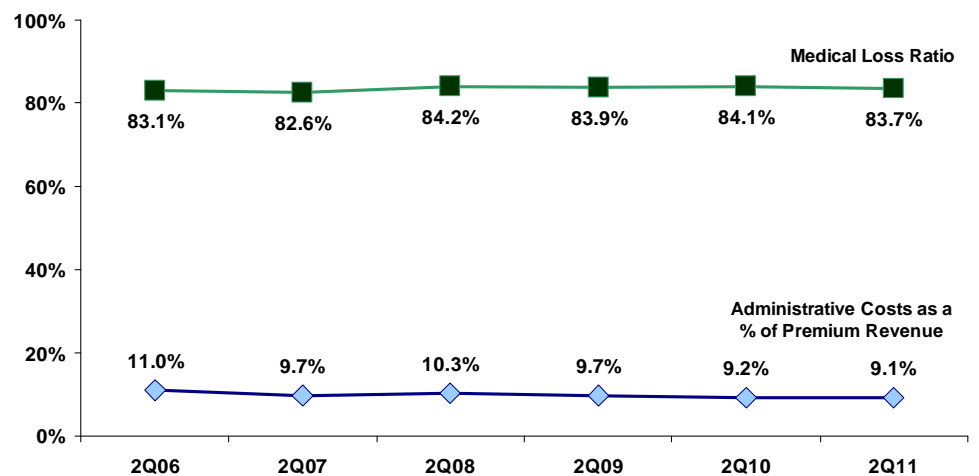
HMO Trends in Florida

(based on second quarter data 2006 to 2011)

Premium Revenue & Medical Expense per Member per Month Percent Change 2Q06 - 2Q11



Medical Loss Ratio & Administrative Costs as a Percent of Premium Revenue 2Q06 - 2Q11



Note: Data includes all plans reporting for given year.

Source: FHA Eye on the Market: HMO Indicators Report, 2Q06 - 2Q11

HMO Reports Available from FHA

To **ORDER** these reports, go to the appropriate link to download the order form or e-mail Angela Colkett at angelac@fha.org.

HMO Indicators Report: *YTD financial & utilization data*
www.fha.org/acrobat/indicatorsorder.pdf

HMO Market Share Report: *Quarterly enrollment & market penetration*
www.fha.org/acrobat/hmomarketshare.pdf

For questions or comments, contact Debbie Hegarty at (407) 841-6230 or debbieh@fha.org.