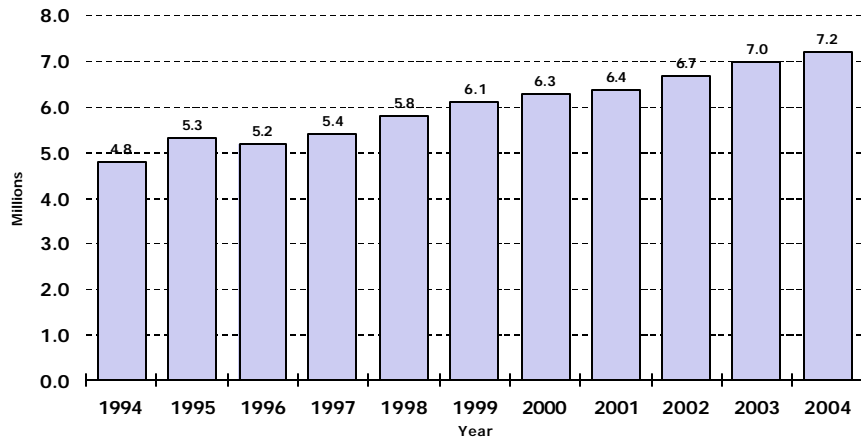


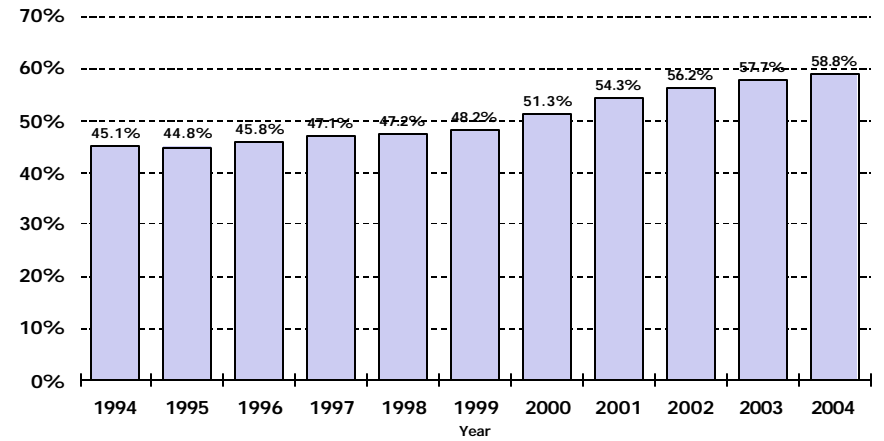


Emergency Department Visits Florida 1994 - 2004



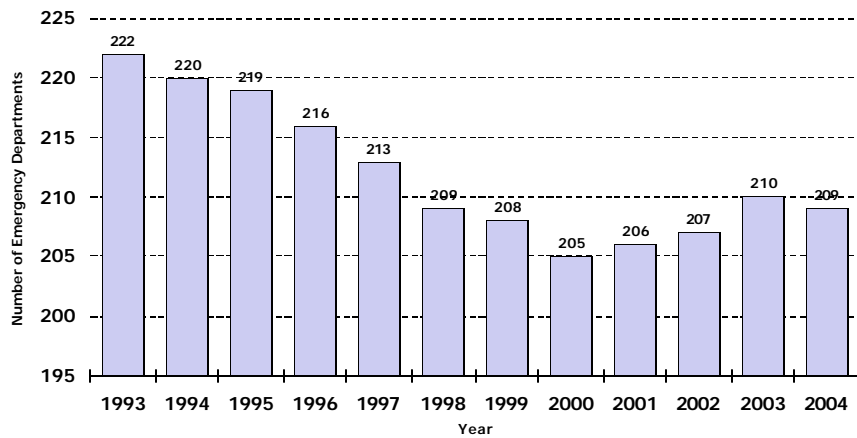
Source: AHCA Financial Data, 1993-2004

Percent of Inpatients Admitted to Hospital from ED Florida 1994 - 2004



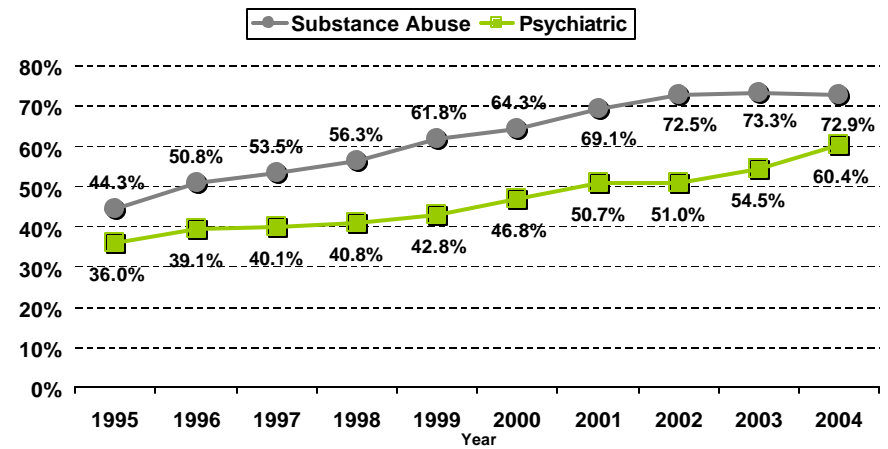
Source: AHCA Discharge Data, 1994-2004

Emergency Departments Florida 1993 - 2004



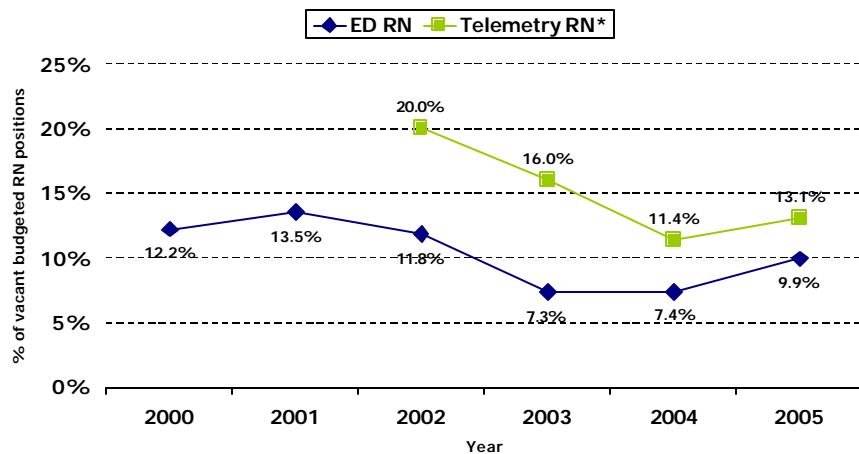
Source: AHCA Financial Data, 1993-2004

Percentage of Behavioral Health Patients Seen in the ED Prior to Hospital Admission 1995-2004



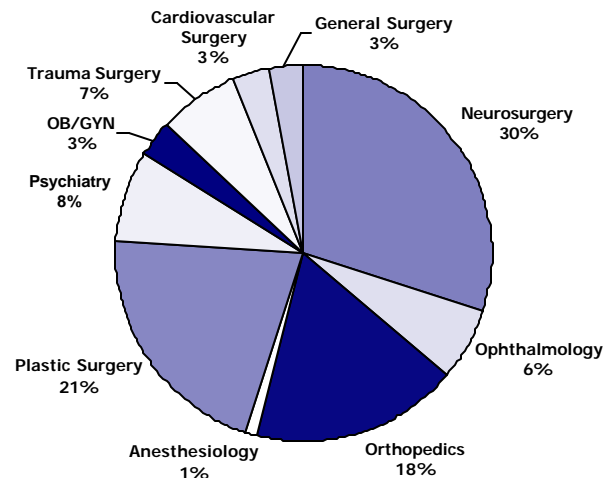
Source: AHCA Discharge Data, 1995-2004

ED and Telemetry RN Vacancy Rates Florida 2000 - 2005



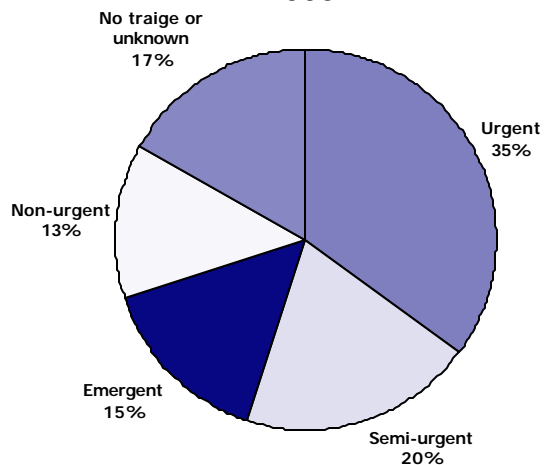
Notes: Survey reflects vacancy information for the last week in February.
Telemetry RN data were not collected prior to 2002
Source: FHA Nurse Staffing Supply Surveys, 2000-2005

Shortages of Specialties for ED On-Call Coverage



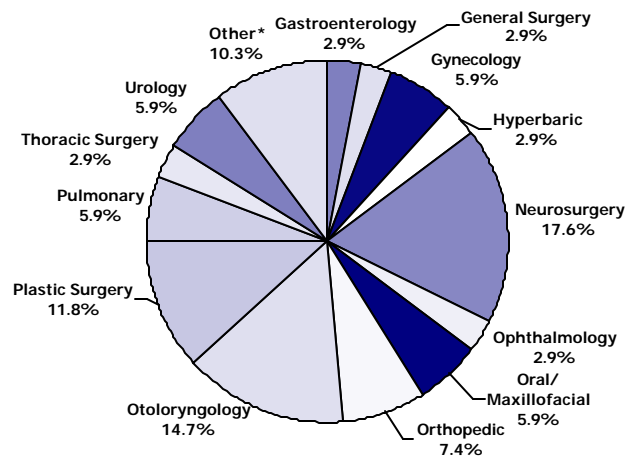
Source: "State of Emergency Medicine: Emergency Physician Study," American College of Emergency Physicians, October 2003

ED Visits by Immediacy U.S. 2003



Source: "National Hospital Ambulatory Medical Care Survey: 2003 Emergency Department Summary," CDC, HCHS, Advance Data No 358, May 2005

ED Coverage Types of Exemptions Sought by Florida Hospitals 1994 - 2004



Note: Other includes the following services with only one request: cardiology, hand surgery, infectious disease, intensive care, OB, pediatric, and podiatry.
Source: AHCA Office of Licensure, 2005

Top Twenty Reasons for Uninsured/Self-Pay Admissions Through the Emergency Department 2004

DRG	Description	Number Admitted	Percent of All DRGs
143	Chest Pain	7,671	6.2%
430	Psychoses	4,323	3.5%
449	Poisoning & Toxic Effects of Drugs Age >17 w CC	3,164	2.5%
204	Disorders of Pancreas Except Malignancy	2,956	2.4%
182	Esophagitis, Gastroent & Misc Digest Disorders Age >17 w CC	2,855	2.3%
127	Heart Failure & Shock	2,849	2.3%
183	Esophagitis, Gastroent & Misc Digest Disorders Age >17 w/o CC	2,693	2.2%
89	Simple Pneumonia & Pleurisy Age >17 w CC	2,294	1.8%
277	Cellulitis Age >17 w CC	2,251	1.8%
278	Cellulitis Age >17 w/o CC	2,184	1.8%
88	Chronic Obstructive Pulmonary Disease	2,146	1.7%
523	Alc/Drug Abuse or Depend w/o Rehabilitation Therapy w/o CC	2,131	1.7%
521	Alcohol/Drug Abuse or Dependence w CC	2,054	1.6%
294	Diabetes Age >35	1,960	1.6%
167	Appendectomy W/O Complications	1,808	1.5%
14	Intracranial Hemorrhage & Stroke With Infarction	1,729	1.4%
174	G.I. Hemorrhage w CC	1,717	1.4%
202	Cirrhosis & Alcoholic Hepatitis	1,518	1.2%
24	Seizure & Headache Age >17 w CC	1,324	1.1%
125	Circulatory Disorders Except AMI, w Card Cath w/o Complex Diag.	1,323	1.1%
	Total Top 20	50,950	40.9%
	Total All DRGs	124,529	

Source: AHCA Inpatient Discharge Database, CY2004

For questions or comments, contact Kim Streit at 407/841-6230 or kims@fha.org.

FHA Task Force on Addressing the Crisis in Emergency Care Report
To download a copy of this report in its entirety, go to www.fha.org.