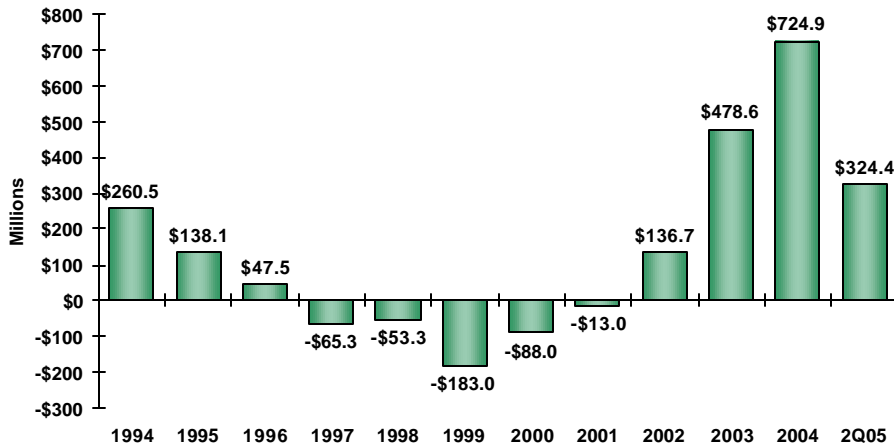
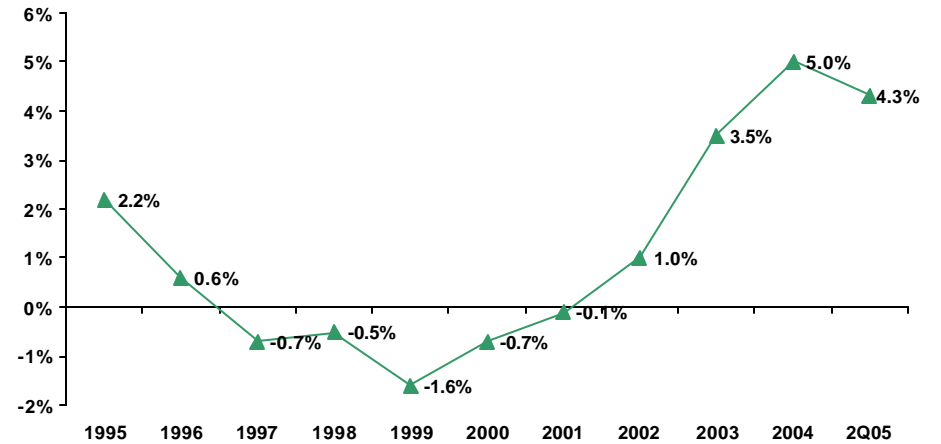




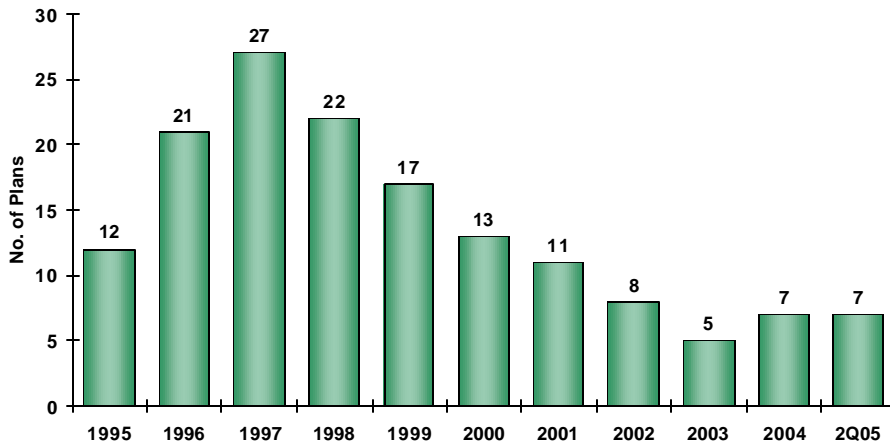
Net Income in Florida's HMOs 1995 - YTD June 30, 2005



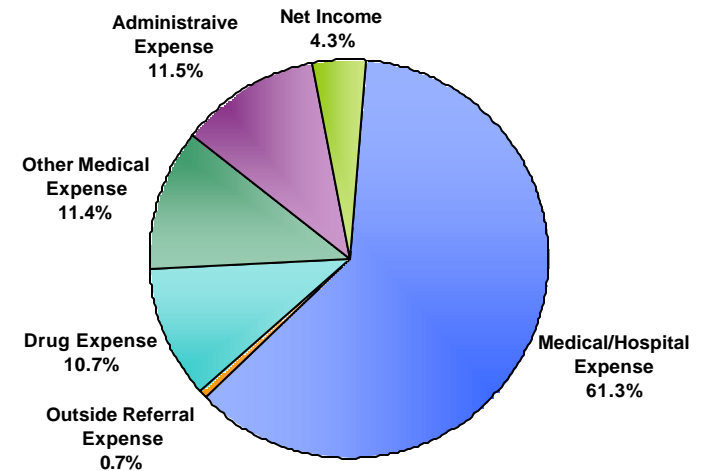
Profit Margin in Florida's HMOs 1995 - YTD June 30, 2005



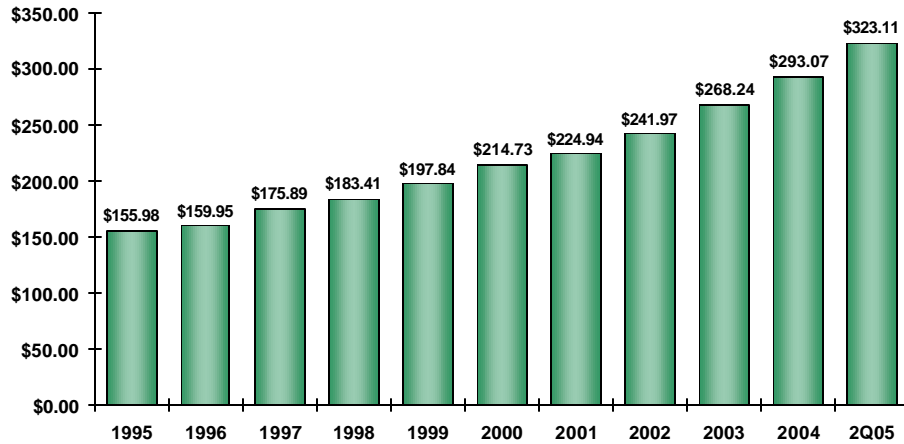
Number of HMOs Reporting Losses 1995 - YTD June 30, 2005



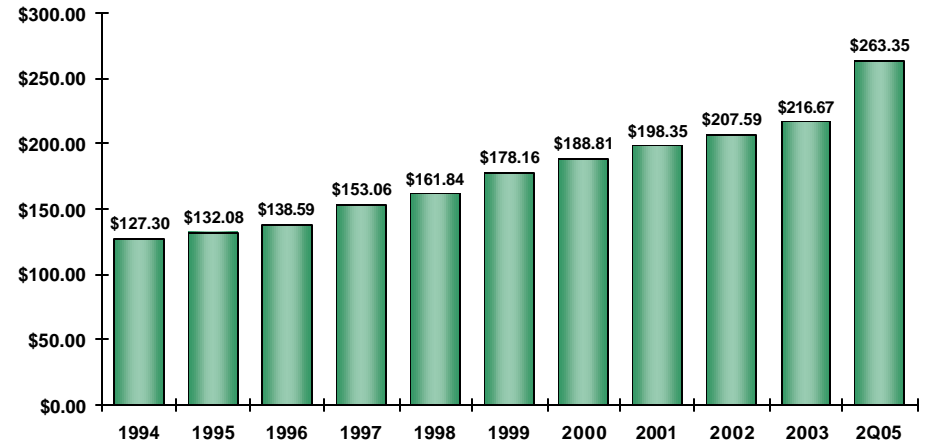
How the HMO Premium is Being Allocated YTD June 30, 2005



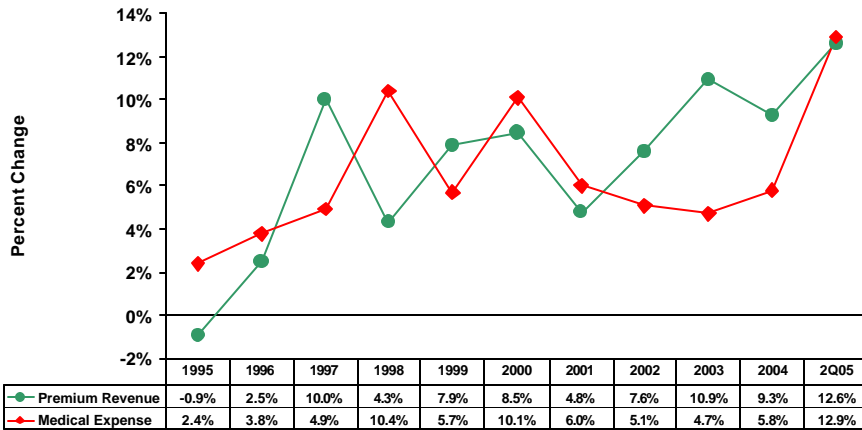
Premium Revenue per Member per Month
1995 - YTD June 30, 2005



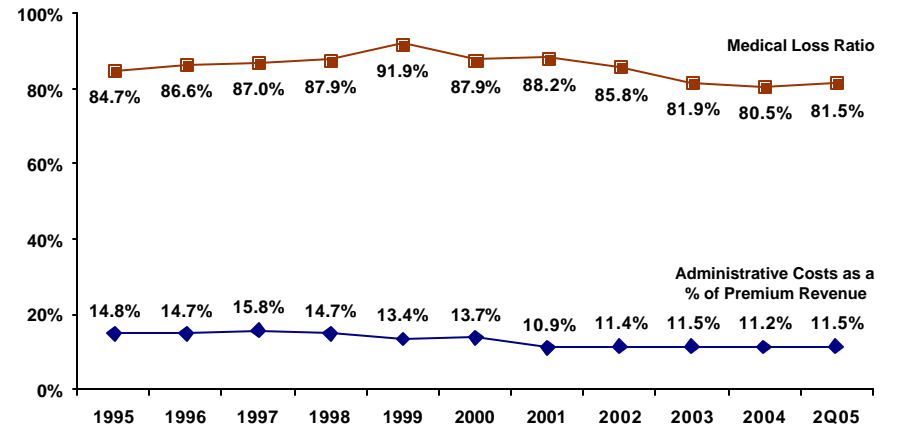
Medical Expenses per Member per Month
1995 - YTD June 30, 2005



Premium Revenue and Medical Expense
per Member per Month
Percent Change
1995 - YTD June 30, 2005



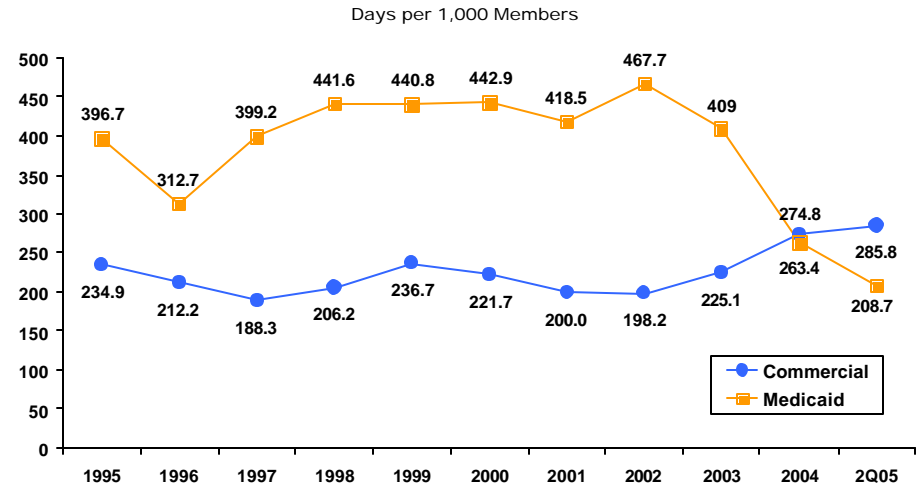
Medical Loss Ratio & Administrative Costs
as a Percent of Premium Revenue
1995 - YTD June 30, 2005



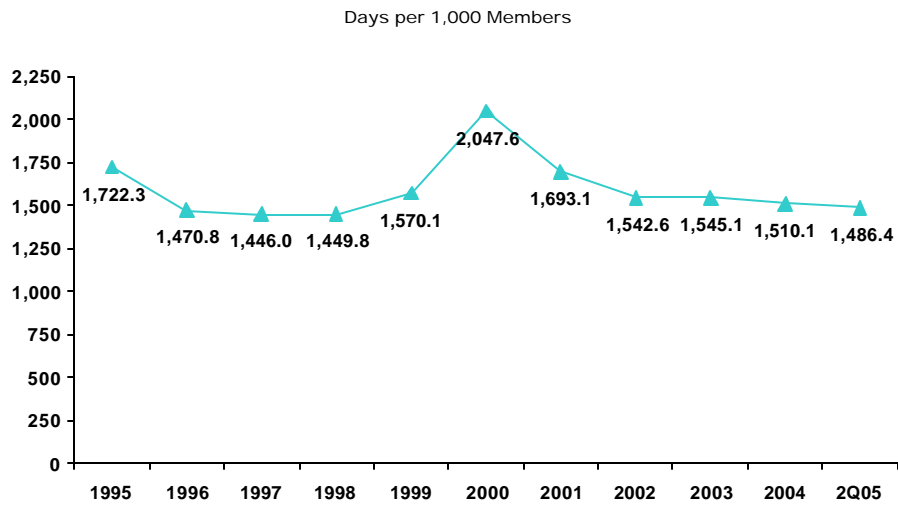
Administrative Expenses per Member per Month 1995 - YTD June 30, 2005



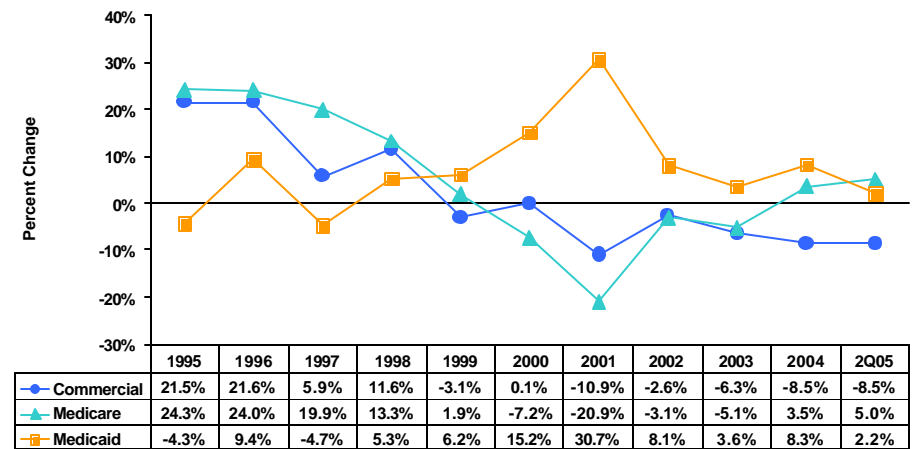
Inpatient Days per 1000 Commercial and Medicaid 1995 - YTD June 30, 2005



Inpatient Days per 1000 Medicare 1995 - YTD June 30, 2005

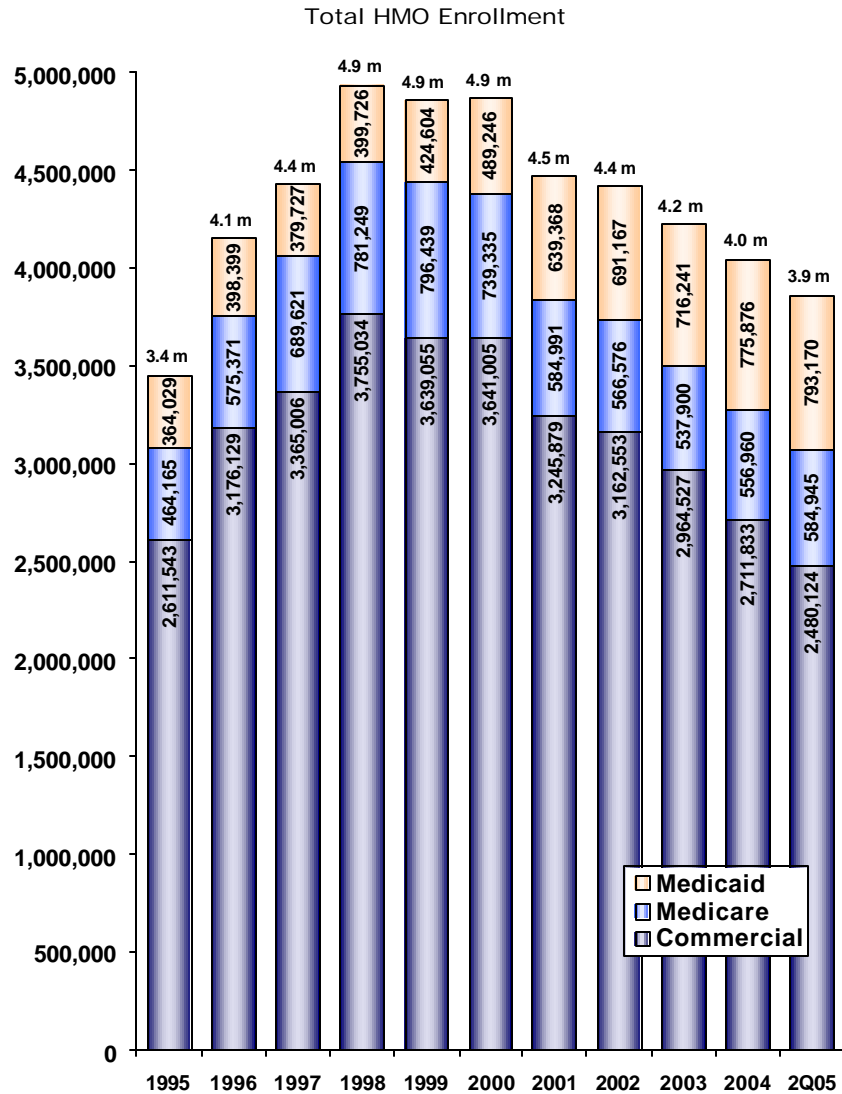


Percent Change in HMO Enrollment 1995 - YTD June 30, 2005

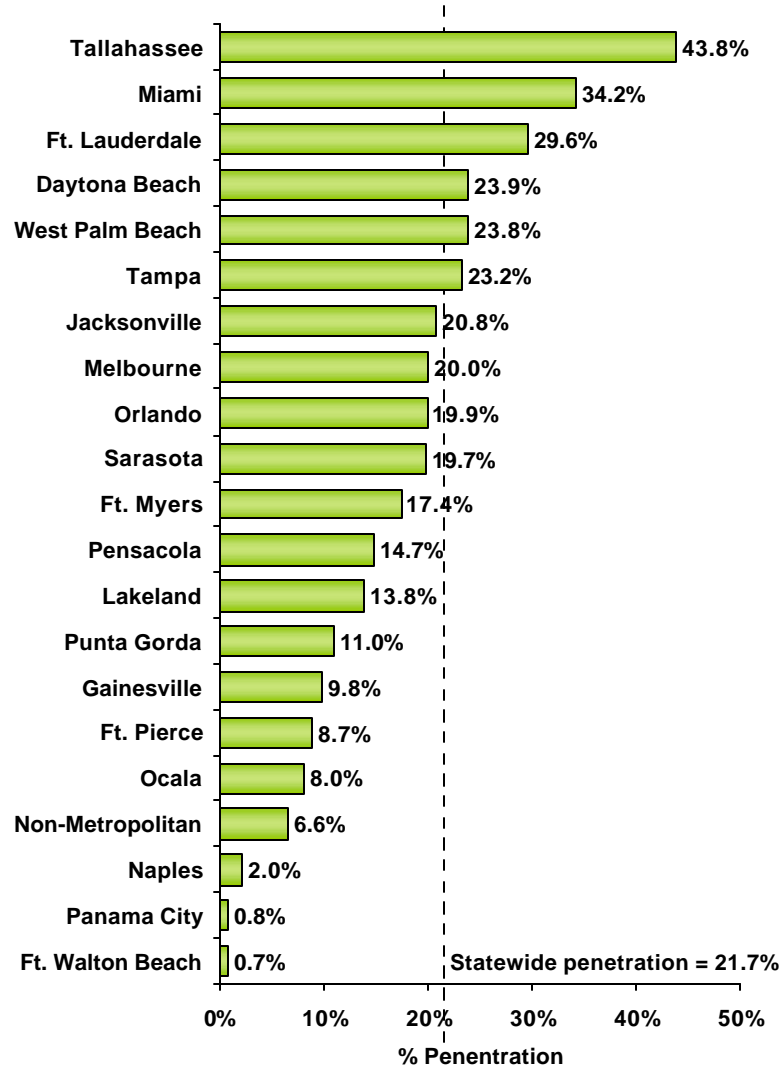


Sources for data brief: FHA Eye on the Market: HMO Indicators Report, 1994-1Q05
HMO filings from the Florida Department of Financial Services

Floridians in HMOs 1995 - YTD June 30, 2005



HMO Penetration by MSA YTD March 31, 2005



Sources: FHA Eye on the Market: HMO Indicators Report, 1994-1Q05
HMO filings from the Florida Department of Financial Services

For questions or comments, contact Debbie Hegarty at 407/841-6230 or debbieh@fha.org.

Quarterly data on individual HMOs can be found in "FHA Eye on the Market: HMO Indicators Report, August 2005."
To order a copy of the report, please contact Debbie at 407/841-6230 or see attached order form.