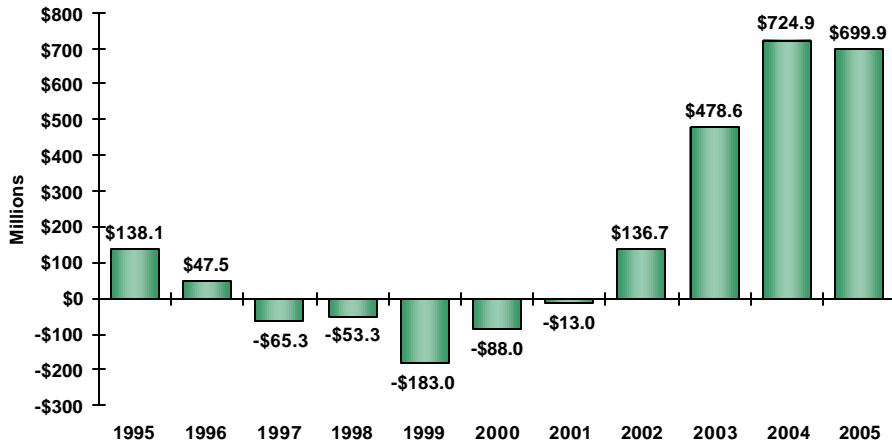
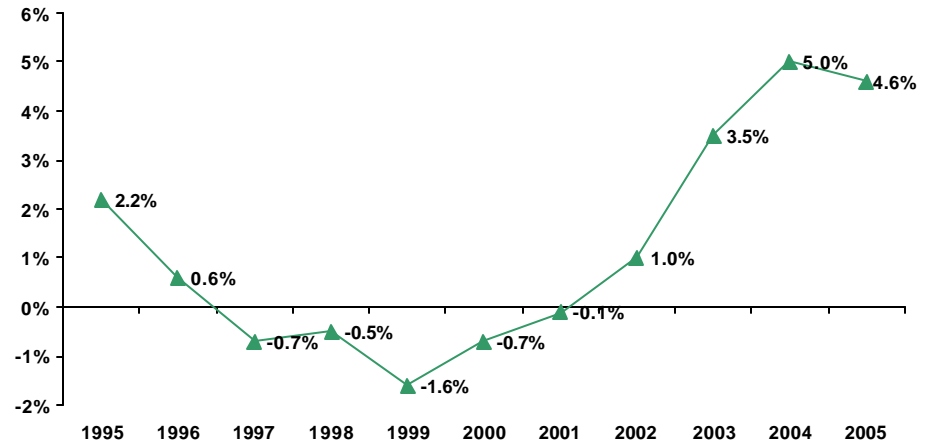




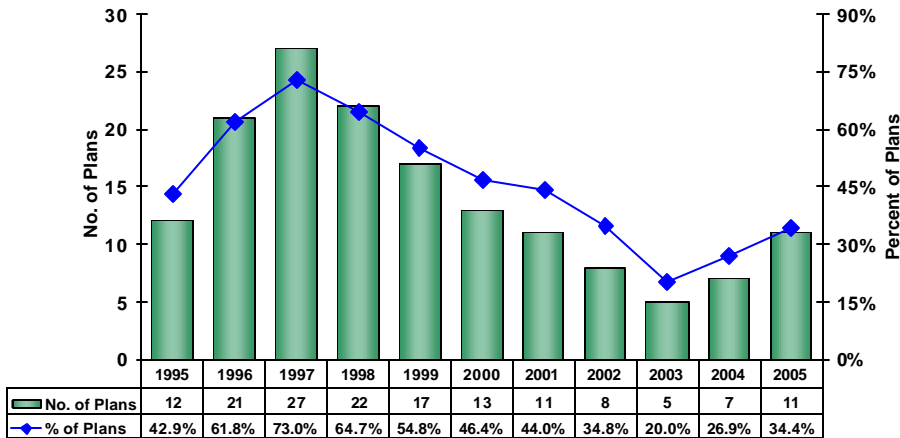
Net Income in Florida's HMOs 1995 - 2005



Profit Margin in Florida's HMOs 1995 - 2005

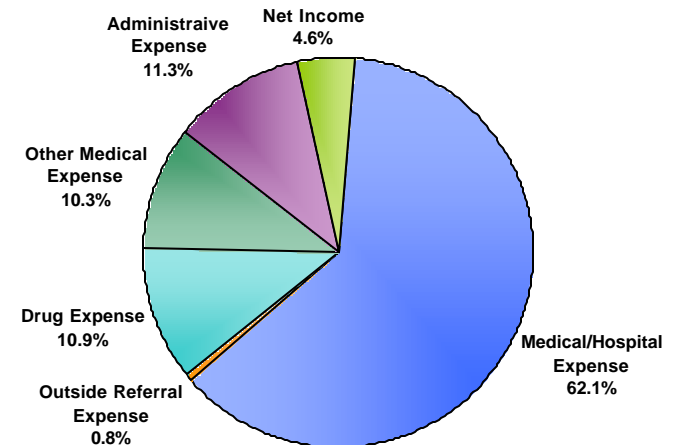


Number of HMOs Reporting Losses 1995 - 2005

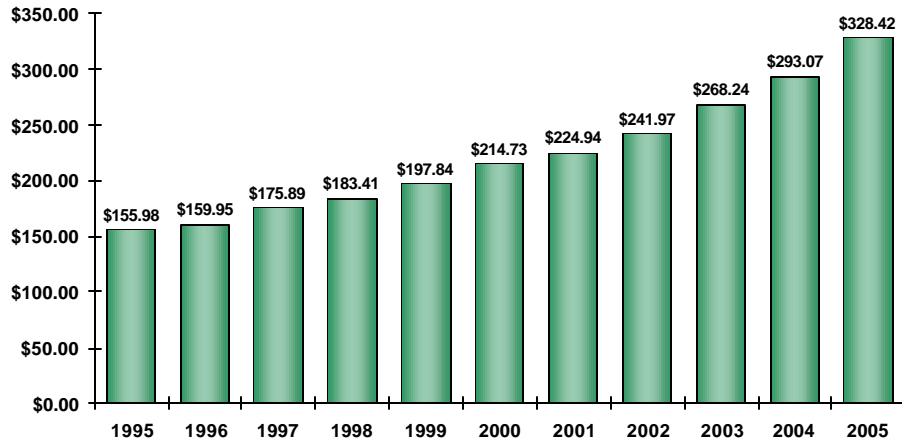


How the HMO Premium is Allocated 2005

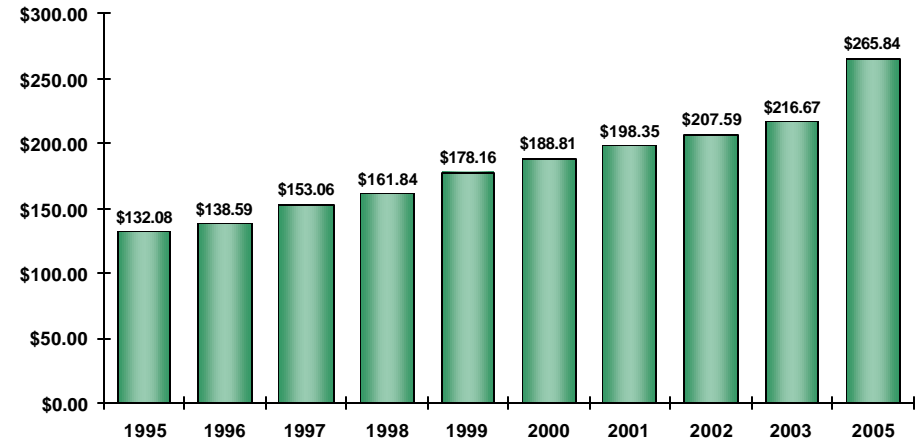
Total Premiums: \$15,244,778,008



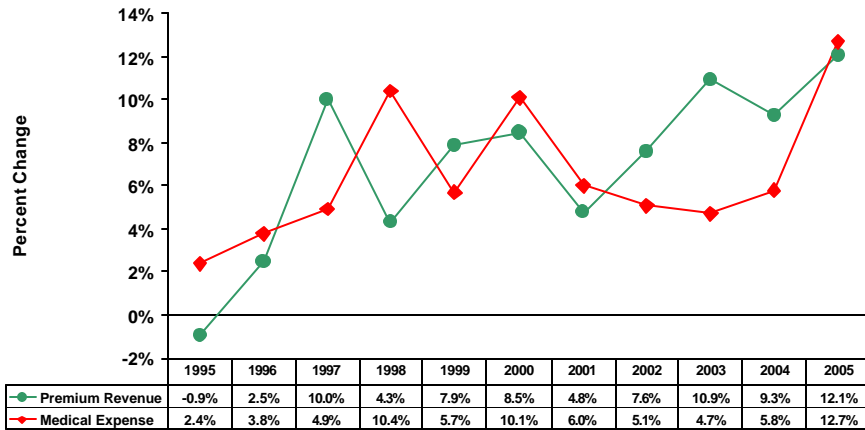
Premium Revenue per Member per Month 1995 - 2005



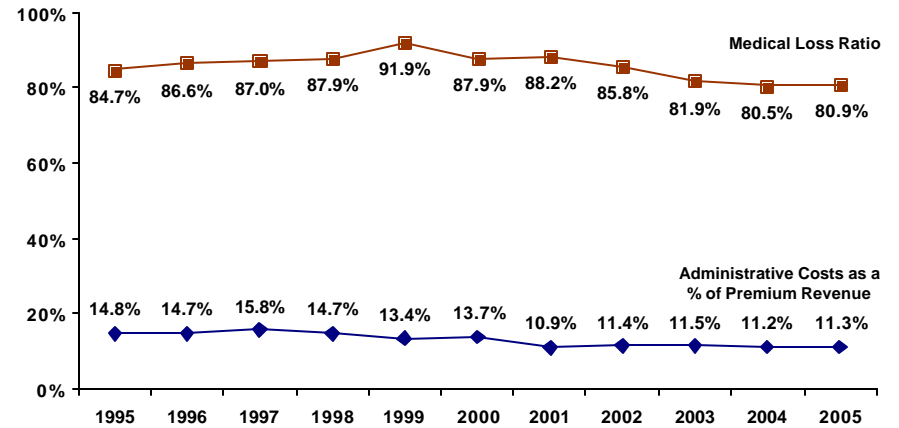
Medical Expenses per Member per Month 1995 - 2005



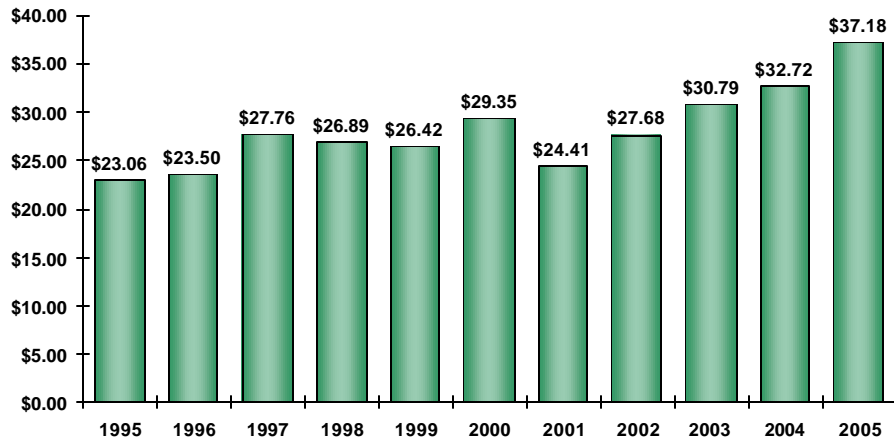
Premium Revenue and Medical Expense per Member per Month Percent Change 1995 - 2005



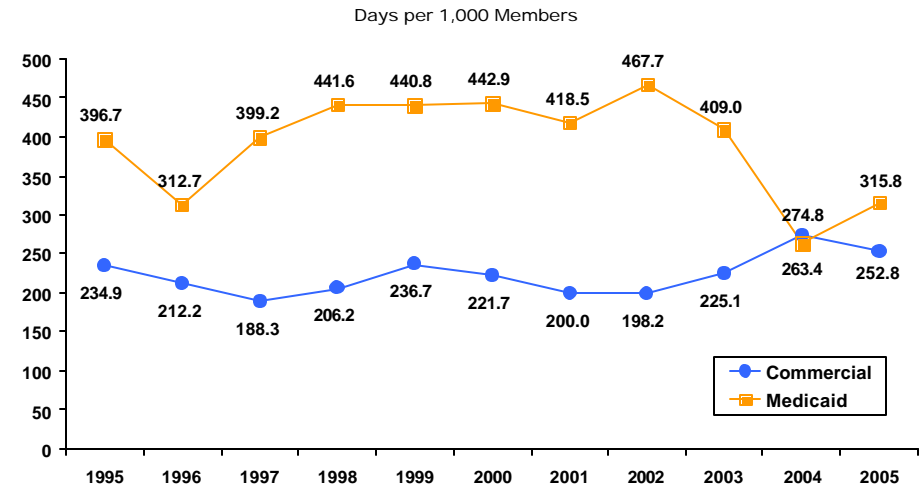
Medical Loss Ratio & Administrative Costs as a Percent of Premium Revenue 1995 - 2005



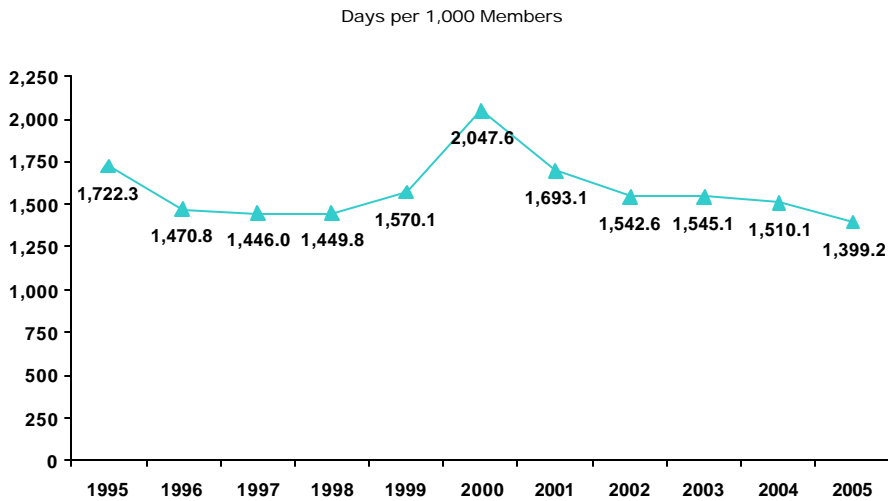
Administrative Expenses per Member per Month 1995 - 2005



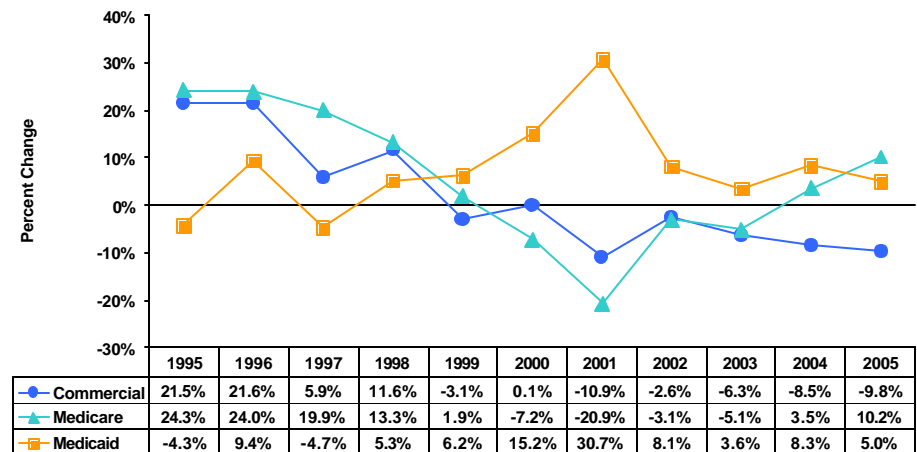
Inpatient Days per 1000 Commercial and Medicaid 1995 - 2005



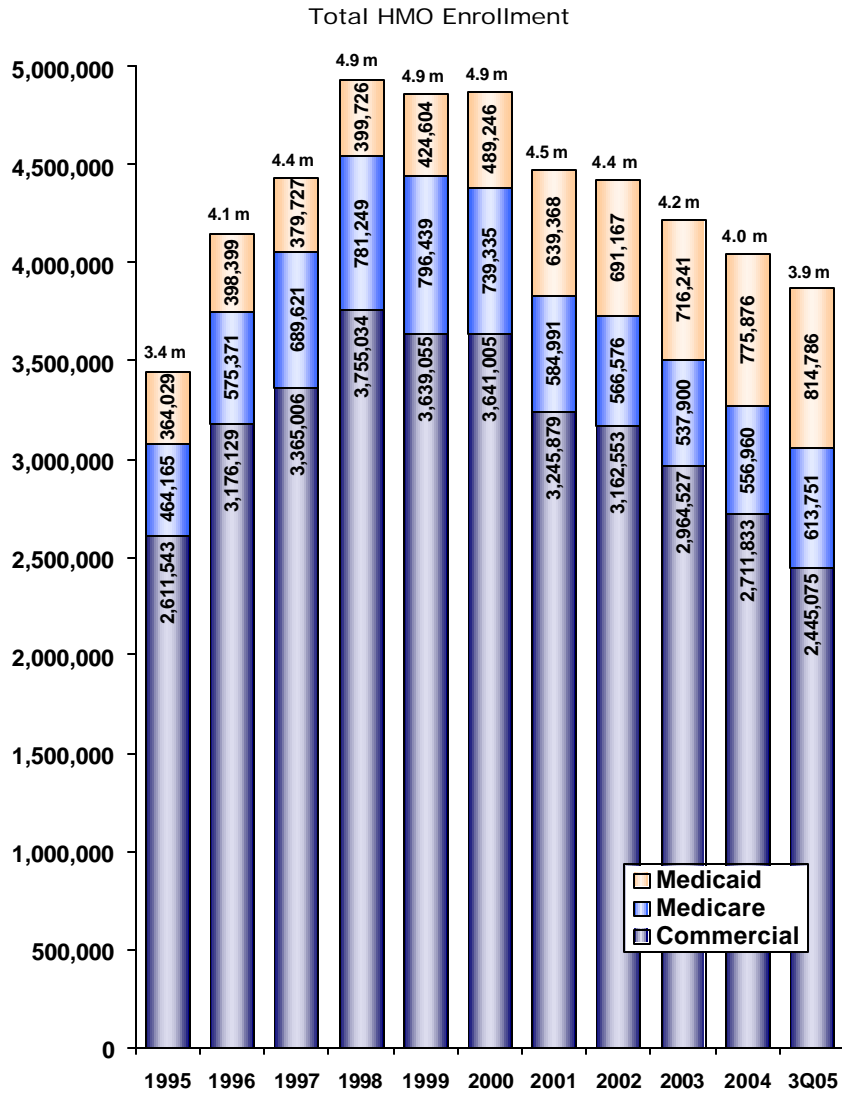
Inpatient Days per 1000 Medicare 1995 - 2005



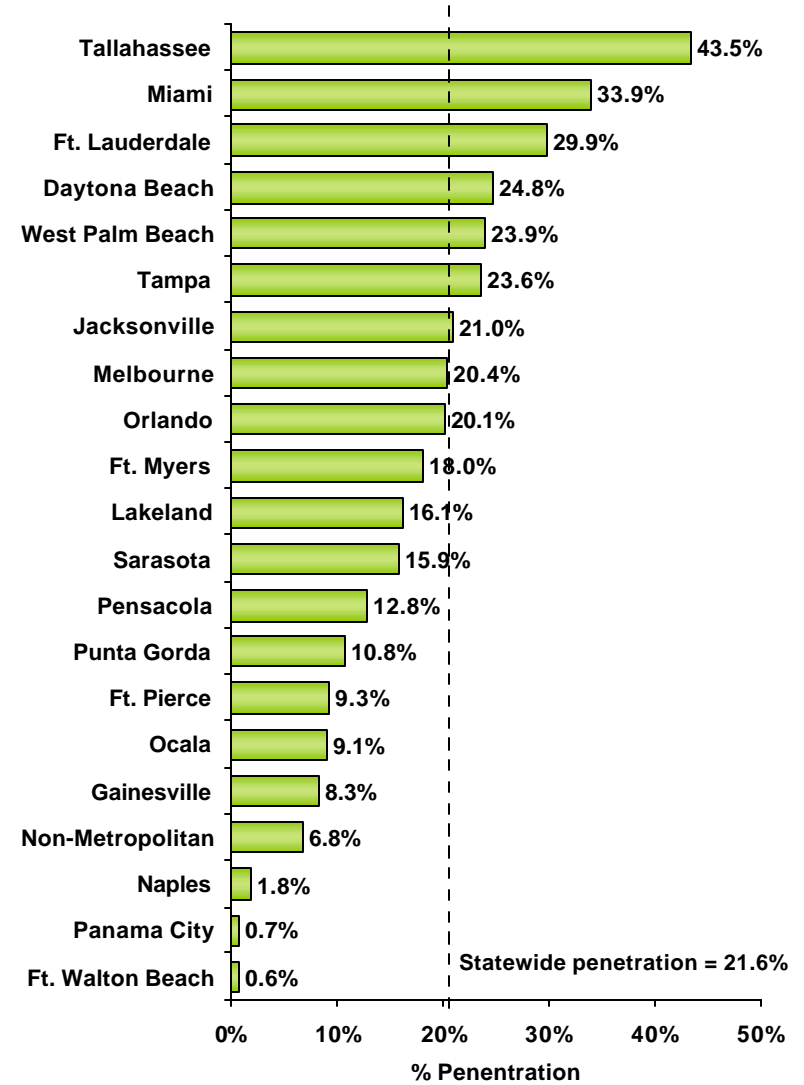
Percent Change in HMO Enrollment 1995 - 2005



Floridians in HMOs 1995 - YTD September 30, 2005



HMO Penetration by MSA YTD September 30, 2005



Sources: FHA Eye on the Market: HMO Indicators Report, 1995-2005
HMO filings from the Florida Department of Financial Services

For questions or comments, contact Debbie Hegarty at 407/841-6230 or debbieh@fha.org.

Quarterly data on individual HMOs can be found in "FHA Eye on the Market: HMO Indicators Report, July 2006."
To order a copy of the report, please contact Debbie at 407/841-6230 or see attached order form.